



# INNOVATOR



02



**06** *Building Community Connections,  
Big and Small*

**08** *Maryland Modernizes Bidding Process With  
e-Construction and Partnering*

**10** *Agencies Deploy Road  
Weather-Savvy Strategies*

**12** *Puerto Rico Traffic Incident Management App  
Shines During Disaster*

**13** *States Innovate*

**14** *First Look at EDC-5 Innovations*

# Kickoff to Every Day Counts Round Five

The Federal Highway Administration will promote 10 technologies and practices in the **fifth 2-year round** of Every Day Counts (EDC-5), the State-based program to rapidly deploy proven but underused innovations to shorten project delivery and enhance the transportation system.

Among the EDC-5 innovations transportation stakeholders are encouraged to explore in 2019 and 2020 are strategies to reduce rural roadway departures, project bundling to pare construction backlogs, and techniques that use crowdsourcing to advance operations.

“EDC-5 offers State and local agencies new opportunities to use innovations to save time, money, and lives,” said Thomas Harman, director of the Center for Accelerating Innovation (CAI), which administers the EDC program. “Making these innovations standard practices will help agencies serve their customers more effectively while delivering highway projects more efficiently.”

In September, CAI is offering introductory webinars on the EDC-5 innovations. Visit the **EDC-5 orientation webinars** page for dates and times.


In October and November, transportation leaders and stakeholders will gather at **regional summits** to learn about the EDC-5 innovations, exchange ideas with counterparts in other States, and provide feedback to FHWA on the support and resources they need to adopt the innovations. Summits are scheduled for Baltimore, MD; Albany, NY; St. Louis, MO; Portland, OR; and Orlando, FL.

After the summits, **State Transportation Innovation Councils** (STICs) will review the EDC-5 innovations being promoted and decide which fit the needs of the agencies and highway programs in their State.

Starting in January 2019, **EDC-5 deployment teams** will provide technical assistance, training, and resources to help transportation agencies and stakeholders adopt the innovations. FHWA will also offer deployment assistance and incentives through its **STIC Incentive** and **Accelerated Innovation Deployment Demonstration** programs.

While the countdown to EDC-5 is underway, efforts to support deployment of the **EDC-4** innovations will continue until the end of December 2018.

## MORE INFORMATION

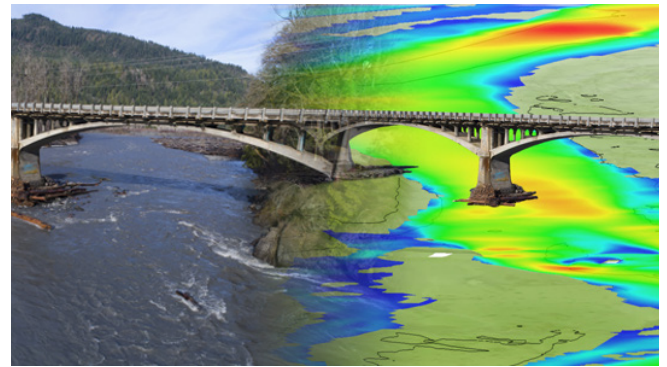
 Learn all about the EDC-5 innovations and their impacts by **registering** for the orientation webinars. Reserve your space and mark your calendar for webinars starting in September.



Share this article on your social media accounts

## Collaborative Hydraulics: Advancing to the Next Generation of Engineering

Tools promoted in the **Collaborative Hydraulics: Advancing to the Next Generation of Engineering** (CHANGE) initiative provide a more comprehensive understanding of complex flow patterns at river crossings than traditional modeling techniques. These hydraulic modeling and computer visualization technologies also facilitate better communication and collaboration, improving agencies' ability to design safer, more cost-effective, and more resilient structures on waterways.



John Gussman

2D hydraulic models provide detailed flow velocity, depth, and other parameters for more accurate design of transportation structures in the riverine environment.



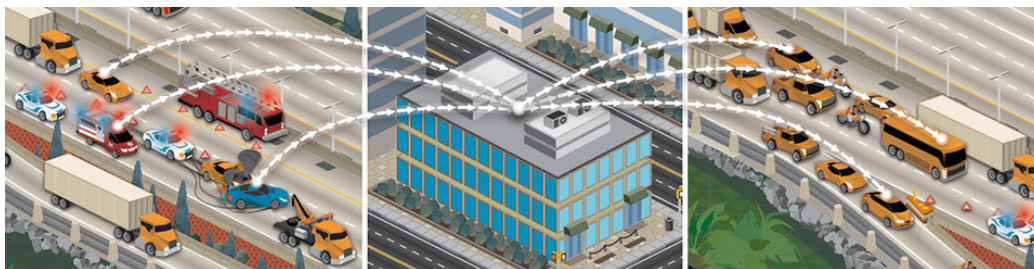
## Project Bundling

As the number of highways and bridges needing attention continues to climb, structures posted for reduced loads adversely affect travel, freight movement, and emergency response times. By using **project bundling** to award a single contract for several similar preservation, rehabilitation, or replacement projects, agencies can streamline design and construction, cut costs, and decrease project backlogs.

Bundling similar projects can produce cost savings due to economies of scale. Repeatable details and similar designs can save both design and construction time, and bundling multiple projects can lower the unit cost of materials.

## Use of Crowdsourcing to Advance Operations

**Using crowdsourcing to advance operations** provides large amounts of reliable, real-time data with more geographic coverage of the transportation system than conventional sources, such as fixed sensors and cameras. Combining crowdsourced data with traditional data sources enables better operation of the transportation system through faster detection of and response to problems, more accurate traveler information, and more effective operations strategies.



Real-time, crowdsourced data from motorists supports operations by expediting notification of events such as crashes and unexpected congestion.

## Unmanned Aerial Systems

**Unmanned aerial systems** can benefit nearly all aspects of highway transportation—from inspection to construction to operations—by collecting high-quality data automatically or remotely. These relatively low-cost devices allow agencies to expedite the data collection needed for better decision making while reducing the adverse impacts of temporary work zones on workers and travelers.



*UAS can support traditional bridge inspection practices to provide rapid, high-quality data.*



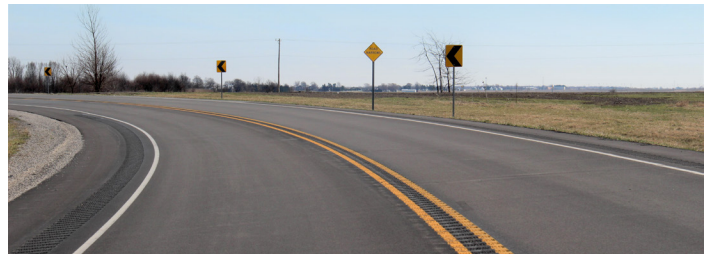
*Crosswalk visibility enhancements such as high-visibility markings and in-street signs help make crosswalks and pedestrians more visible.*

## Safe Transportation for Every Pedestrian

Pedestrian fatalities account for 16 percent of roadway fatalities, and pedestrian crashes occur predominantly at midblock and intersection crossing locations. As pedestrian safety continues to be a concern, the cost-effective countermeasures in the **Safe Transportation for Every Pedestrian** (STEP) initiative can help provide safer crossings.

## Reducing Rural Roadway Departures

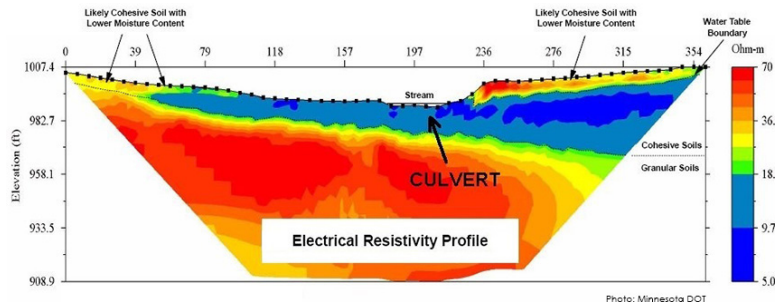
**Reducing rural roadway departures** is a major challenge in the United States, where roadway departures on the rural road network account for one-third of traffic fatalities. Systemic application of proven countermeasures—such as rumble strips, friction treatments, clear zones, and roadside hardware—helps keep vehicles in their travel lanes, reduce the potential for crashes, and lessen the severity of crashes that do occur.



*Even with little or no data, systemic application of roadway departure countermeasures at curves are effective in reducing severe crashes.*

## Advanced Geotechnical Exploration Methods

Conventional subsurface exploration methods provide limited data for project design, which can result in constructability issues and increased cost. **Advanced geotechnical exploration methods** generate more accurate geotechnical characterizations that improve design and construction, leading to shorter project delivery times and reducing the risks associated with limited data on subsurface site conditions.



*Geophysical imaging can distinguish material and groundwater variations across a site.*

### Virtual Public Involvement

Robust public engagement during transportation planning and project development can accelerate project delivery by identifying issues early. **Virtual public involvement** techniques, such as telephone town halls, online meetings, and social media, offer convenient, efficient, and low-cost methods for informing the public, encouraging participation, and receiving input.



Virtual public involvement tools include online surveys, visualization, and telephone town halls.



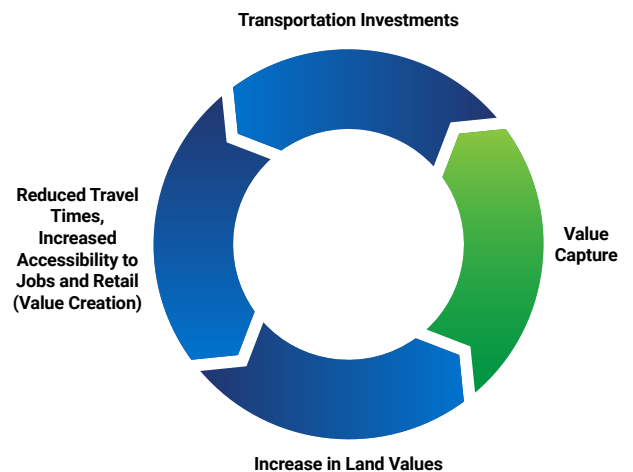
Traveler information systems can improve safety during adverse weather conditions.

### Weather-Responsive Management Strategies

More than 20 percent of crashes are weather-related, and weather-associated travel delays can result in significant productivity and efficiency losses. **Weather-responsive management strategies** support agencies in deploying improved traffic control and traveler information systems that will reduce crashes and delays resulting from adverse weather. The initiative also promotes anti-icing strategies to cut chloride use.

### Value Capture: Capitalizing on the Value Created by Transportation

When agencies invest in transportation assets that improve access and increase opportunity in the community, adjacent property owners benefit through greater land value and other positive economic impacts. Techniques promoted in the **Value Capture: Capitalizing on the Value Created by Transportation** initiative enable the public sector to share in a portion of this increased land value to reinvest in the transportation system.



Value capture returns a portion of land value created by transportation to be used for future investments.

# Building Community Connections, Big and Small



City of Gainesville, FL

The next time you go for a walk or bike ride, think about the infrastructure that makes it possible. In some cities and towns, pedestrians and bicyclists aren't able to get to where they want to go. For example, "Before the 11<sup>th</sup> Street Bridge project in Washington, DC, if you didn't own a car, you couldn't get across the Anacostia River," said Robert Mooney, head of the Federal Highway Administration Preconstruction Team and a leader of the Every Day Counts round four (EDC-4) team championing **community connections**. "Now there is a 16-foot-wide pedestrian-bicycle bridge."

The EDC-4 community connections initiative offers tools and strategies for developing inclusive, interconnected transportation systems through planning, designing, and managing public spaces that promote people's health, happiness, and well-being. The focus is on retrofitting, rehabilitation, and removal options that turn aging infrastructure into opportunities for reestablishing community connections and cohesion.

## Bringing Communities Together

The Washington State Department of Transportation (WSDOT) replaced the State

Route 520 floating bridge—a four-lane structure built over Lake Washington more than a half century ago—with an even longer, safer, six-lane bridge designed to withstand strong windstorms and waves. The new bridge has a 14-foot-wide path for bicyclists and pedestrians.

"It has opened up an amazing connection," said WSDOT Community Liaison David Goldberg. "There were people who would bike to where they could get a bus and then put their bike on the bus or in a locker and then cross the lake. Many of them now bike the entire way."

Now that the connection across the lake is complete, the highway rebuild and bicycle-pedestrian trail will continue through two Seattle neighborhoods and Portage Bay to connect to Interstate 5. The project includes block-long landscaped lids over the sunken freeway to physically reconnect the neighborhoods of Montlake and Roanoke-Portage Bay. The design will create park space, connect bicycle-pedestrian pathways, and upgrade transit stops.

*In Gainesville, FL, a pedestrian bridge is a signature gateway to the Depot Avenue corridor.*

Not all community connection projects are this extensive. The EDC-4 initiative's approaches apply to communities of all shapes and sizes, whether urban or rural. "It could be as simple as adding a sidewalk or a traffic light or a **roundabout**," said Corbin Davis, FHWA community planner and part of the EDC-4 community connections team. "It doesn't have to be a large project."

In Gainesville, FL, an updated Depot Avenue corridor now provides a linkage between many neighborhoods, major employment centers, and several parks. The city repaved the road, added bike lanes and landscaping, and removed traffic signals.

"This corridor is the first east-west roadway that has roundabouts versus traffic signals," said Chip Skinner, city of Gainesville assistant public information officer. "It connects well-established historical neighborhoods with the University of Florida and P.K. Yonge School."

## Using Community Connections Approaches

More than half the country uses community connections in some form. Eleven States and Washington, DC, have institutionalized community connections approaches and another 21 States are developing, demonstrating, or assessing innovative approaches to planning, project development, or design.

"The other half of the country is probably working on community connections, but they most likely call it something different, such as livability, complete streets, or context-sensitive solutions," said Davis.

Pursuing community connections has many benefits. "We're improving multimodal access for people, regardless of ability, age, or socioeconomic status," said Davis. "Transportation allows people to live fuller lives and improves their quality of life. This is about helping the end users but also the agencies to have more effective programs, processes, and projects."

The EDC-4 deployment team has identified 26 community connections **tools** from planning and public involvement to design and operations. The team is developing a handbook to help State and local agencies understand how and when to use



Washington State Department of Transportation

*A bird's-eye view of the State Route 520 Eastside corridor includes the floating bridge over the lake.*

the tools. Set to be released in October, the handbook will also include 16 case studies.

"There are success stories everywhere," said Davis. "Most States have something you can point to that is a community connection. We want to help them do more of it."

## MORE INFORMATION

- ▶ Watch the **community connections** Innovation Spotlight video.
- Visit the new community connections **website**.
- @ Contact **Corbin Davis** or **Kenneth Petty** of the FHWA Office of Planning, Environment, and Realty or **Robert Mooney** of the FHWA Office of Infrastructure for information and technical assistance.



Share this article on your social media accounts

# Maryland Modernizes Bidding Process With e-Construction and Partnering

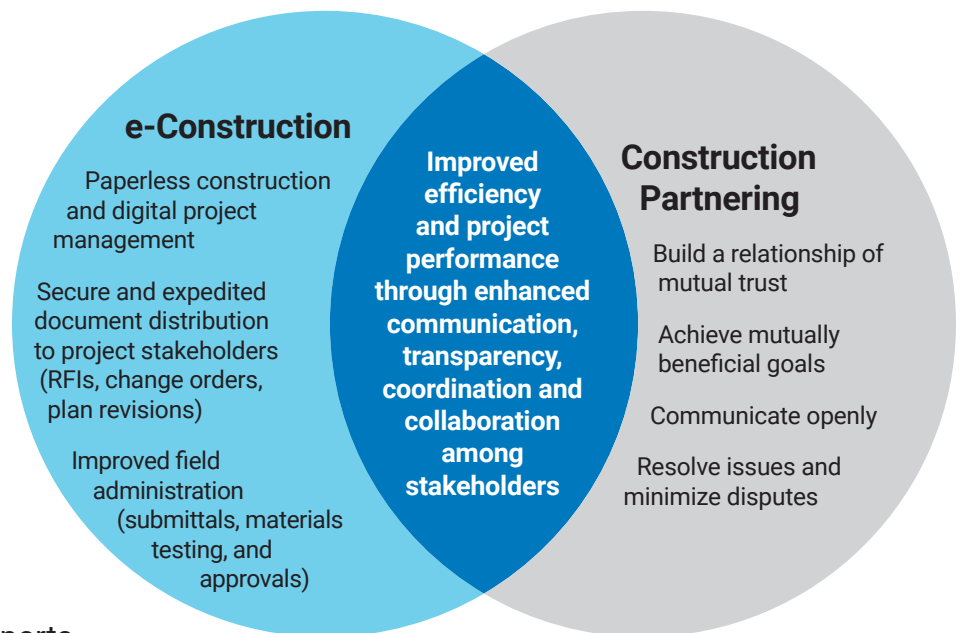
The Maryland Department of Transportation State Highway Administration (MDOT SHA) has taken a big step toward streamlining its construction process by launching an electronic bidding system, part of its deployment of the Every Day Counts round four (EDC-4) **e-Construction and partnering** (eCP) initiative.

When Governor Larry Hogan came into office in 2015, his charge was to make doing business with the State easier and more convenient. The eCP innovation, under the leadership of MDOT SHA Administrator Greg Slater, supports Maryland's Open for Business initiative.

"e-Construction is one way MDOT SHA is modernizing and improving efficiency," said Slater. "The Federal Highway Administration's support is helping us implement e-Construction, which saves time and moves projects forward faster, reducing construction duration and saving money. Every initiative like this makes the customer experience better."

All contracts now go through Maryland's **online bidding and solicitation service** that allows contractors to submit paperless bids and get real-time bid results. MDOT SHA staff also use mobile tablets to file inspection reports and approvals in the field, and the agency is working toward implementing electronic signatures. The department was able to implement the system sooner than planned by using **State Transportation Innovation Council Incentive** funds to deploy mobile devices for field inspection.

Leadership has played a significant role in the implementation of eCP in Maryland, and support from the MDOT SHA Office of Information Technology was critical to properly assess the resource requirements and compatibility



with existing systems. Maryland contractors have also been supportive partners in the implementation of electronic bidding because it translates to quicker decisions and reduces repeated paperwork and related errors.

"Leadership support is key in getting the funding and the commitment of staff. They also need buy-in from the users, who are not just the DOT employees, but also the contracting community. The contractors need to be on board with the program for it to be successful," said Kathryn Weisner, FHWA construction and contract administration engineer and a leader of the EDC-4 deployment team.

## Enhancing Partnering With Technology

Maryland is among many States participating in the EDC-4 initiative, which promotes the use of paperless technologies to enhance partnering among stakeholders, improving communication and workflows while streamlining project delivery. Applying technology to support secure, expedited document transmission and distribution is at the heart of eCP and serves as a building block



for developing additional resources. Combining e-Construction and construction partnering increases transparency, saves time, and reduces costs over time.

Use of e-Construction is becoming widespread, with nearly every State developing, demonstrating, or assessing e-Construction tools and processes or using them as a standard practice. About two-thirds of the States are developing, demonstrating, or assessing eCP or have made it a standard practice.

The EDC-4 team hosts webinars and peer exchanges to facilitate relationships between State and local agencies so that they can share successes and minimize obstacles that others may have experienced. FHWA does not endorse specific products or tools, but States are encouraged to share their firsthand experience from a user perspective.

“e-Construction does take some significant legwork, and the ability to have State DOT staff who have been there show the return on investment is huge. It can help create that synergy for States that haven’t taken those steps,” said Weisner.



*Combining e-Construction and partnering can enhance collaboration and project delivery.*

“The peer exchanges were designed and enhanced from EDC-3 to EDC-4 to give us an effective deployment activity,” said Chris Schneider, FHWA construction management engineer and a leader of the EDC-4 deployment team. “The national webinars are high impact, and we are getting a lot of participation. There’s still a lot more to come in 2019 and 2020 to help with the deployment of eCP.”

## MORE INFORMATION

- ▶ View an Innovation Spotlight video on [e-Construction and Partnering: A Vision for the Future](#).
- See FHWA’s [e-Construction and partnering web page](#) for a resource library, videos, and webinar recordings.
- 🎧 Watch recordings of past webinars in the [e-Construction and partnering webinar series](#) and register for upcoming sessions:
  - “e-Construction Tools and Technology: Implementing a Document Management System,” November 28, 2018, 2 to 3:30 p.m. ET
  - “Access to Legacy System Using a Mobile Application,” January 30, 2019, 2 to 3:30 p.m. ET
  - “Using Geospatial Technology for Recording As-Built Conditions,” February 27, 2019, 2 to 3:30 p.m. ET
- @ Contact [Chris Schneider](#) of the FHWA Office of Infrastructure or [Kathryn Weisner](#) of the FHWA Resource Center for information and technical assistance.



Share this article on your social media accounts

# Agencies Deploy Road Weather-Savvy Strategies

Two **road weather management—weather-savvy roads** strategies—Pathfinder and integrating mobile observations (IMO)—are helping agencies in Colorado, Nevada, and Wyoming manage road systems and inform drivers about road weather conditions that may affect their travel.

**Pathfinder** is a collaborative initiative of the National Weather Service (NWS), State transportation departments, and private weather service providers to share and translate forecasts into consistent public transportation impact statements. IMO is the collection of weather and road condition data from fleets using advanced vehicle-based technologies to provide a comprehensive view of network conditions.

## Pathfinder Process in Colorado

The Colorado Department of Transportation (CDOT) uses a five-step Pathfinder process to proactively manage its response to adverse weather. Before a severe weather event, CDOT, regional NWS forecast offices, the Colorado Avalanche Information Center, and a private weather forecaster prepare a weather and road condition forecast briefing.

The partners hold a conference call to discuss the forecast, operational readiness, and consistent, impact-based messages, then develop an implementation plan that includes maintenance and communication strategies. They execute the plan before and during the weather event and, after



*Pathfinder and IMO strategies help agencies and travelers handle adverse weather events.*

significant storms, conduct a review to improve future responses to weather events.

CDOT reports that the process results in more focused and efficient storm treatment strategies, more effective traffic management approaches, and better communication to drivers on weather impacts. A survey of maintenance managers also found that the majority believe Pathfinder increased communication and collaboration during storm events.

For more information, read the Colorado Pathfinder [case study](#) or contact [Lisa Streisfeld](#) or [David Johnson](#) of CDOT.

## Colorado's Pathfinder Process



Colorado Department of Transportation

## Vehicle-Based Data Sharing in Nevada

IMO deployment is enabling the Nevada Department of Transportation (NDOT) to harness information from its vehicle fleet on weather and road conditions. The data improves awareness of real-time road conditions, resulting in enhanced safety, reliability, and mobility during winter weather events.

The cost and limitations of wireless communication services create challenges for mobile fleets in sending and receiving data, so NDOT implemented a hybrid approach to transmit data using radio, cellular, Wi-Fi, and dedicated short-range communications (DSRC). Each fleet vehicle automatically switches to the best available technology mode depending on its location, with DSRC transmission prioritized and used whenever possible because of cost and speed.

Hybrid technologies reduce cost, leverage existing connections, and improve IMO data access to NDOT's Traffic Management Center. NDOT reports that benefits of deploying hybrid communications include enhanced systemwide awareness and performance monitoring that enable improved highway maintenance operations and equipment maintenance.

For more information, read the Nevada IMO [case study](#) or contact [Rod Schilling](#) of NDOT.

## Coordinated Eclipse Response in Wyoming

The Pathfinder process can play a critical role in coordinating responses to major or special events that could be affected by weather, such as the August 21, 2017, total solar eclipse.

Before the eclipse, the Wyoming Department of Transportation (WYDOT), NWS field offices, and WYDOT's private sector meteorologist held regular calls to discuss potential increases in traffic, potential cloud cover that could affect visibility, and fire danger from large numbers of visitors driving in dry areas to view the eclipse. They also coordinated on media briefings.

NWS, WYDOT, and Wyoming visitor websites and social media platforms provided travelers with eclipse information, and WYDOT displayed messages on its dynamic messaging system on fire

restrictions in effect. WYDOT issued proactive messaging through its [commercial vehicle operator portal](#) on heavy traffic and limitations on oversized loads.

As anticipated, traffic around Wyoming was up 68 percent on the day of the eclipse, with some routes experiencing more than a 100 percent increase. While traffic volume increases caused major back-ups around the State, WYDOT staff did not receive any complaints from the public. WYDOT believes the widespread and coordinated messaging before the eclipse had a positive impact and helped raise awareness about the expected increased traffic.

For more information, read the Wyoming [case study](#) or contact [Vince Garcia](#) of WYDOT.

## MORE INFORMATION

↓ [“What is Pathfinder?”](#) provides an overview of Pathfinder, including benefits and implementation steps.

[“Pathfinder: Implementation Recommendations”](#) offers five key recommendations for putting Pathfinder into practice and addresses common concerns about the initiative.

[“What is IMO?”](#) provides an overview of IMO, including benefits and lessons learned.

[“Weather-Savvy Roads Benefits and Costs”](#) outlines benefits and costs that agencies might expect from deploying Pathfinder and IMO.

@ For information and technical assistance on road weather management, contact [Paul Pisano](#) or [Ray Murphy](#) of FHWA.



Share this article on your social media accounts

# Puerto Rico Traffic Incident Management App Shines During Disaster

After Hurricane Maria struck Puerto Rico in September 2017, the island's transportation infrastructure was decimated. The road network, especially in and around San Juan, was vital to getting relief materials distributed, but the Puerto Rico Highway and Transportation Authority (PRHTA) infrastructure monitoring system was blinded by the storm with only four of 55 closed-circuit television cameras in operation. PRHTA had to find another way to identify blocked roadways and get limited response services on the scene. PRHTA turned to a recently created data application that transformed how the agency was able to function, increase mobility, and reduce congestion.

The Puerto Rico Department of Transportation and Public Works is developing an integrated traffic incident management (TIM) program as part of an intelligent transportation systems (ITS) project for the San Juan metropolitan area. The TIM program consists of a coordinated, multidisciplinary effort to detect, respond to, and clear traffic incidents so that traffic flow can be restored safely and quickly. In Puerto Rico, the Unified Emergency Response and Operation Service, better known by its Spanish acronym SEGURO, is a key part of the TIM effort.

Established just months before Hurricane Maria, SEGURO provides roadside safety assistance on San Juan metropolitan area highways, including setting up cones and digital signage, changing tires, coordinating towing service through the Puerto Rico police, and coordinating emergency



Puerto Rico Department of Transportation and Public Works

A TIM data collection app helped SEGURO patrols with emergency response in Puerto Rico after Hurricane Maria.

response with agencies such as the police, ambulance, and fire department through PRHTA's Traffic Management Center (TMC).

SEGURO responders are equipped with a two-way radio system, computer tablets, and a specially developed web application, the PRHTA Highway Service Patrols app. With the app, patrols record details of traffic incidents for later analysis by the TMC. By providing a bridge between SEGURO and the TMC, the app makes high-quality collection of TIM data possible, an important part of the Every Day Counts initiative on [using data to improve TIM](#).

When back-to-back hurricanes, Irma and Maria, slammed into Puerto Rico, the ITS network was heavily damaged. SEGURO units spent the day after Maria hit helping the transportation department remove road debris. As the SEGURO units

started navigating the roads again, communication services were reestablished and SEGURO communicated hazards to the TMC. The app facilitated communication between the TMC and Emergency Operations Center, providing information used to reroute travelers and emergency responders.

During Puerto Rico's ongoing recovery, the app has gone through modifications to adjust to the need to improve the data collection analysis process, expand the coverage area, and keep tracking TIM performance measures. Use of the app is showing that managing traffic incidents and collecting data do not need to rely just on the SEGURO units' traffic-monitoring cameras, which provide real-time video feeds to the TMC. As the app continues to evolve, better data will improve safety and reduce hazards for incident responders.

In July 2018, the remnants of a tropical storm passed over the island, causing minor flooding on an expressway, and SEGURO again demonstrated how the service is working as the ears and eyes on the roadways. SEGURO reported the flooding in the app and the TMC, transportation department, public works, and toll roads were alerted. In a coordinated effort, crews were dispatched to quickly clean and clear the roadways.



Share this article on your social media accounts

# States innovate!

## Missouri Demonstrates Intelligent Compaction on Paving Projects

The Missouri Department of Transportation (MoDOT) used [Accelerated Innovation Deployment Demonstration](#) funds to demonstrate the use of [intelligent compaction](#) (IC) and infrared scanning (IR) to improve pavement construction quality control and efficiency. MoDOT applied the technologies on 13 projects to provide real-time detection of paving and compaction issues so crews could make any needed adjustments to the paving operation. Data from the projects show that using IC and IR improved construction quality, which can result in longer-lasting pavements and lower maintenance costs. MoDOT is using IC and IR on 14 more projects this year.

## New Jersey Advances Electronic Administration of Local Programs

The New Jersey Department of Transportation (NJDOT) used [State Transportation Innovation Council Incentive](#) funds to advance the use of mobile devices in the administration of grant programs for local agencies. In the past, NJDOT staff documented field inspections in paper reports. Hands-on training showed staff how to use mobile devices to record inspection findings, take photographs for reference, and file electronic reports. NJDOT reports that eliminating manual data collection improved efficiency, enabling staff to redirect time and effort to provide better oversight of local projects. Use of tablets for field reviews and ratings of local grant program applications is saving an estimated 50 percent on the time needed for paper reviews.

## Gaming App Helps Contractors Find New Workers

The [Constructors Association of Western Pennsylvania](#) developed a free gaming app called [Future Road Builders](#) that lets users explore a virtual highway construction project to see the skills needed to be a highway construction apprentice. As users explore the tool, they receive links to apprenticeship applications on their mobile device. The idea is that if people are interested in highway construction but don't know which trade would best suit them, the app can help them gain insight into several areas quickly. By May, the app had more than 5,000 downloads. Twenty-three percent of applicants chosen for apprenticeships in skilled highway crafts in western Pennsylvania in 2018 used the app to find their opportunity.

Share this article on your social media accounts



# INNOVATOR

INNOVATOR, published by the FHWA Center for Accelerating Innovation, advances the implementation of innovative technologies and accelerated project delivery methods in highway transportation.

**Elaine L. Chao**  
Secretary, U.S. DOT

**Brandye Hendrickson**  
Acting Administrator, FHWA

Center for Accelerating Innovation Team:

**Thomas Harman**  
Director

**Jeffrey Zaharewicz**  
Senior Advisor

**Ewa Flom**  
Program Coordinator

**Sara Lowry**  
Program Coordinator

**Fawn Thompson**  
Program Coordinator

**Julie Zirlin**  
Program Coordinator

**Nichole Causey**  
Marketing Specialist

Ellen Schweppe  
Managing Editor

James Cline, Jr.  
Designer

Rebecca Taylor  
Designer

Rodney Walker  
Designer



U.S. Department of Transportation  
**Federal Highway Administration**

## First Look at EDC-5 Innovations

The Center for Accelerating Innovation is offering a series of introductory webinars on the 10 innovations included in Every Day Counts round five (EDC-5) that the transportation community will deploy in 2019 and 2020.

Scheduled for September 10 to 26, the 90-minute webinars provide an overview of each innovation and its benefits, examples of how the innovation is being used in transportation programs, and resources available to help deploy it.

Go to the [EDC-5 innovation orientation webinars](#) page to register for live webinars or to watch webinar recordings.

---

## Subscribe Today!

Don't miss an issue! [Sign up](#) to receive EDC News and Innovator newsletters.

## Want More Innovator?

Access past issues in the [Innovator Archive](#) and have the next issue sent to your mobile device by texting "FHWA Innovation" to 468311.

Email reprint requests to [Nichole Causey](#).