

Travel Monitoring Analysis System (TMAS) version 2.8 Details and Demo

2017 Highway Information Seminar (HIS)

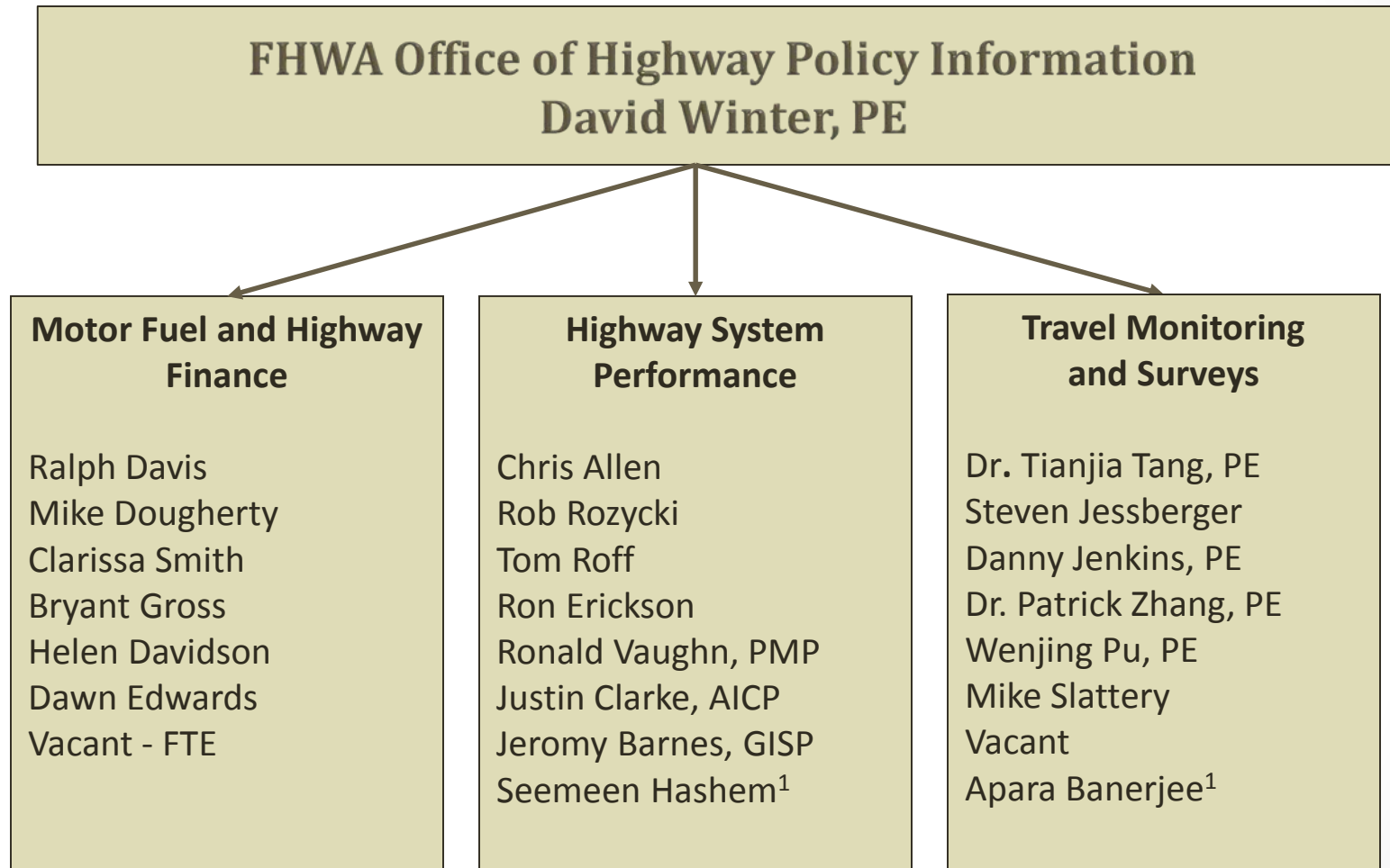
Steven Jessberger

Travel Monitoring and Surveys Section

Wednesday, November 15, 2017



Office Organizational Chart



TMAS 2.8 Features

- Nonmotorized station data upload, review and approval
- Nonmotorized station by day of year tracking (vs. yearly)
- Nonmotorized station count data upload, review and approval
- Nonmotorized station count data for partial days, portable or permanent counts (volumes)
- Export, delete and reporting
- Data ownership
- Can receive data from DOT's, MPO's and/or local agencies
- Same simplified import, process and approval process
- 2016 TMG formats only
- Expected in early 2018



Nonmotorized QC – by site

- Any zero adjacent hour check
- Consecutive zeros check
- Total hourly count to high
- Total daily count minimum
- Total daily count maximum
- Multiple identical counts
- 3 am vs. 3 pm comparison
- Year over year MADT change to high



Future - TMAS 3.0 Features

- For volume data – am/pm volume check
- For class data – class 8 vs. 9 check,
- For class data – improved DOW historical done by class volumes if low and % if high,
- For weight data – speed/ATS check from PVF,
- For weight data – QC of all classes (even 1-3),
- For weight data – ACF from PVF or WIM data,
- GIS (HPMS base layer),
- Pavement Design Guide (PDG) export and grouping,
- Speed (5, 15 or 60 min),
- Per Vehicle Format (PVF), [FL, HI, ID, IN, NV, MD, MT, PA, RI, ...]
- Nonmotorized improvements,
- Reclassification of either weight and PVF and
- Query for all users



TMAS 2.8 Demonstration

- Upload demo
- Processing results
- Approving data
- Exporting data – all data available to all users
- Ownership process
- Re-validation
- QC by site set-up
- Reporting (volume)



Questions and Comments

TMAS System Owner

Steven Jessberger
1200 New Jersey Ave. SE
Washington DC 20590

202-366-5052

steven.Jessberger@dot.gov

Other support from Jeremy Raw
jeremy.raw@dot.gov

