



U.S. Department
of Transportation

**Federal Highway
Administration**

Building Information Modeling (BIM) for Infrastructure

An Administrative View



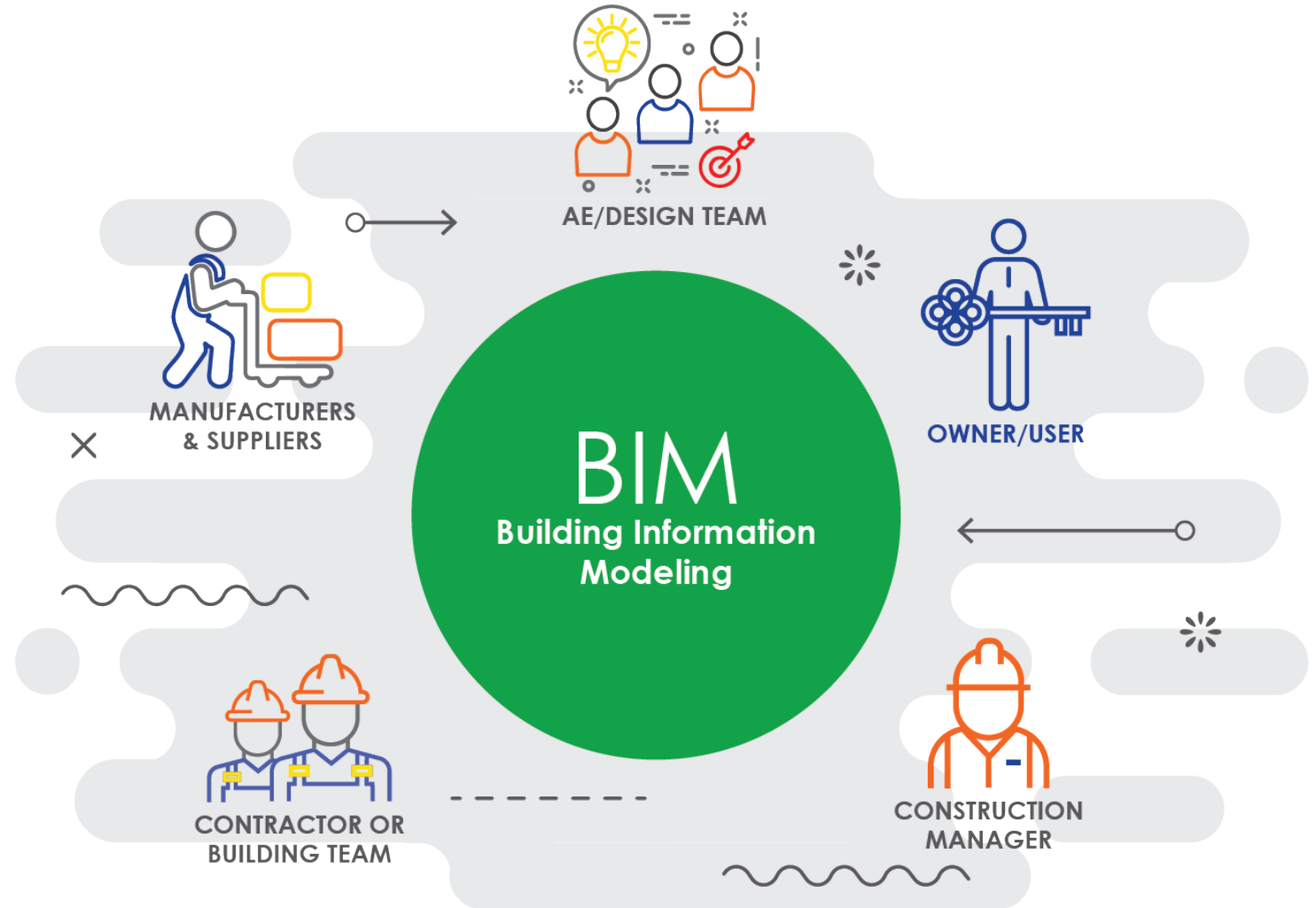
Agenda

- Concepts of BIM for Infrastructure
- State DOT example projects to date
- Business value of BIM for Infrastructure
- Lessons learned

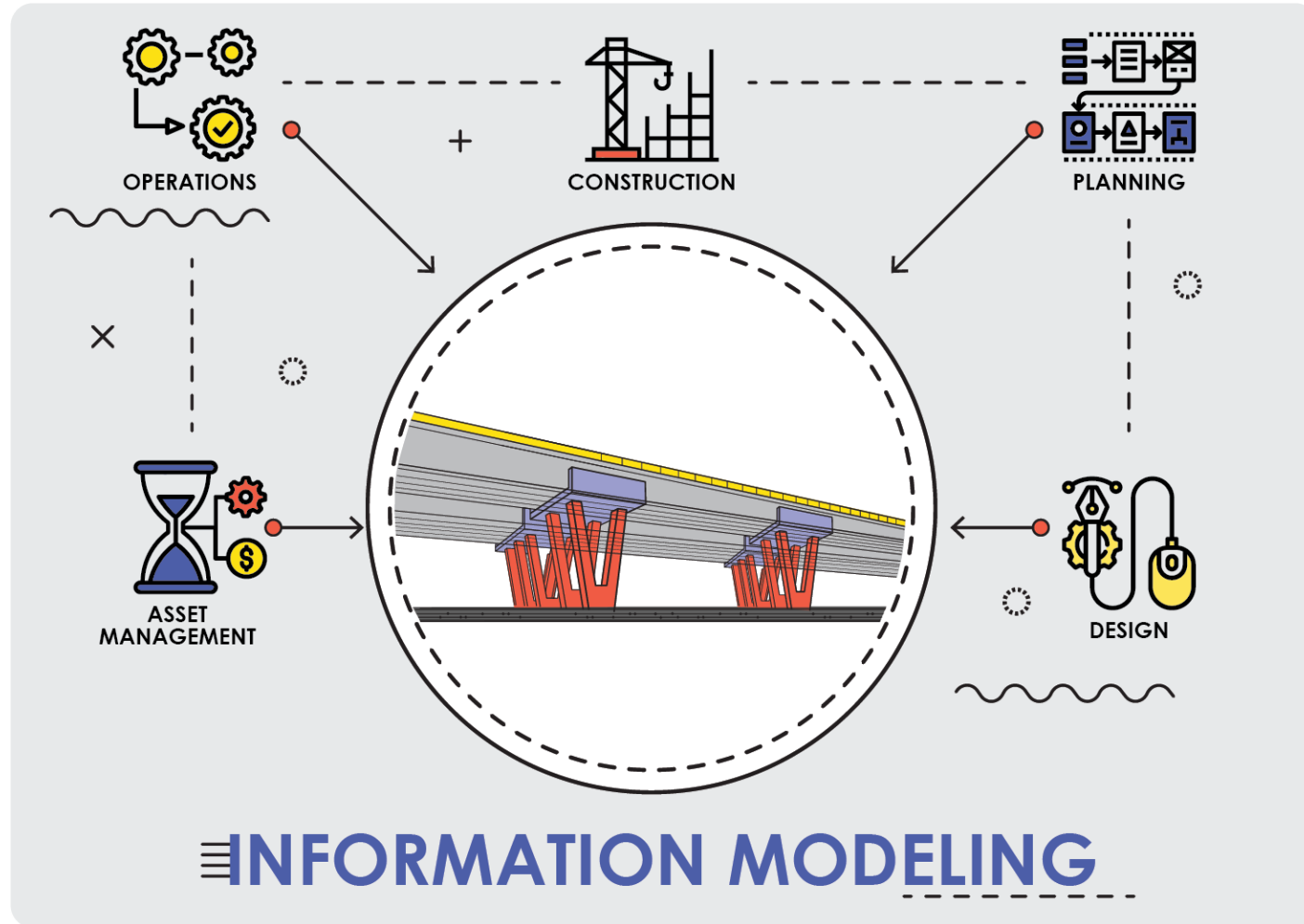


Concept of BIM for Infrastructure

- BIM means build it twice, once virtually
- Digital representation of the physical and functional characteristics of an infrastructure asset
- The process of developing a precise, data rich, virtual 3D representation of existing and proposed elements belonging to a programmed construction project
- Serves as a shared knowledge resource for information about an infrastructure asset
- Basic premise: Collaboration by different stakeholders at different phases of the life cycle of an infrastructure asset (insert, extract, update or modify information)



Information Modeling



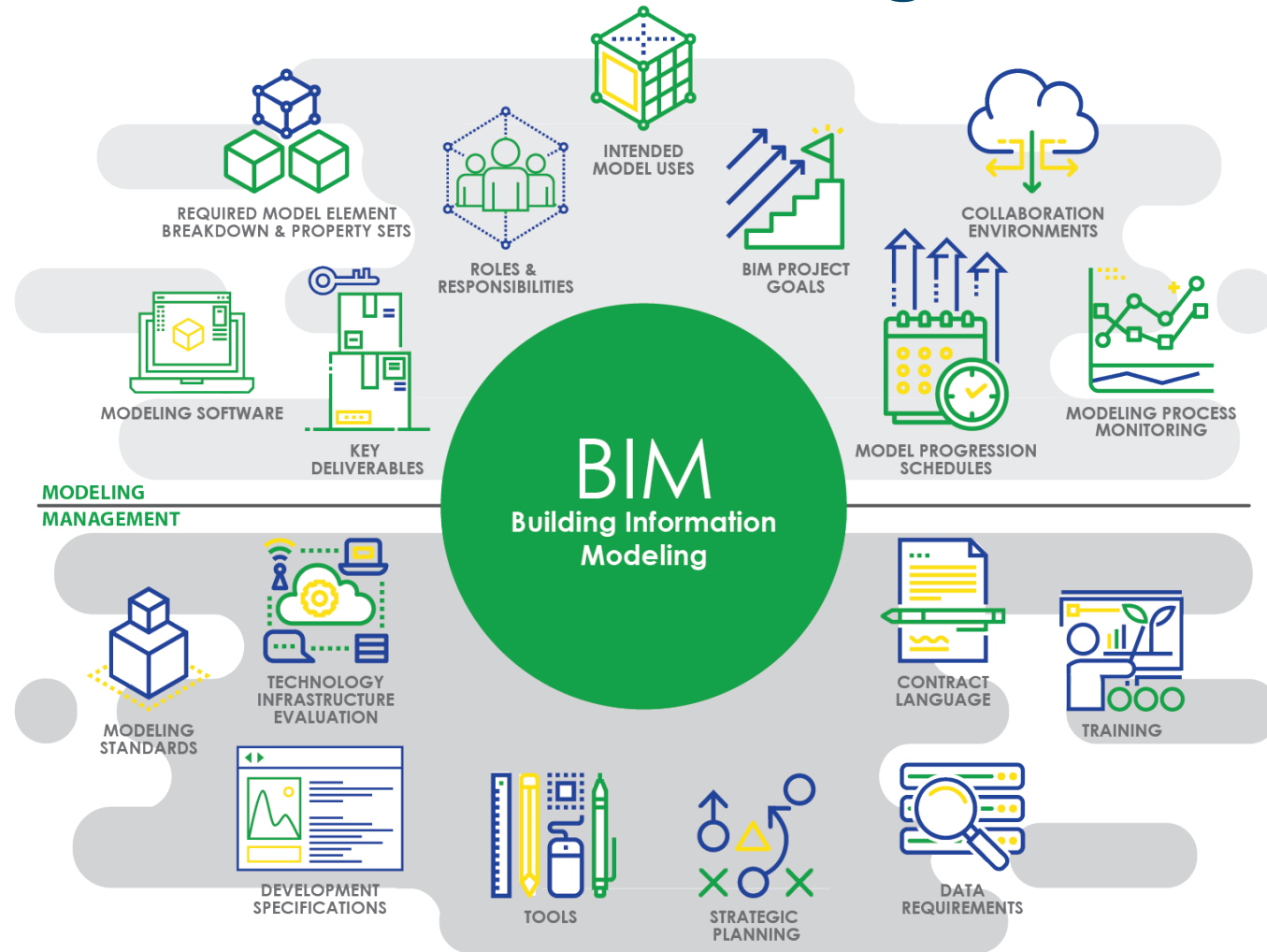
BIM for Infrastructure: The Environment

Critical factors for success:

- Clear and precise contract language
- A strategically planned and well-managed common data environment
- Owner originated data requirements
- Modeling voluntary standards that are not regulatory in nature



Building Information Modeling



BIM Project Execution Planning Guide

- Overview of the project execution planning procedure for BIM
- Identifying BIM goals and uses for a project
- Designing the BIM project execution process
- Developing information exchanges
- Define supporting infrastructure for BIM implementation

These steps are not required under Federal statute or FHWA regulations.





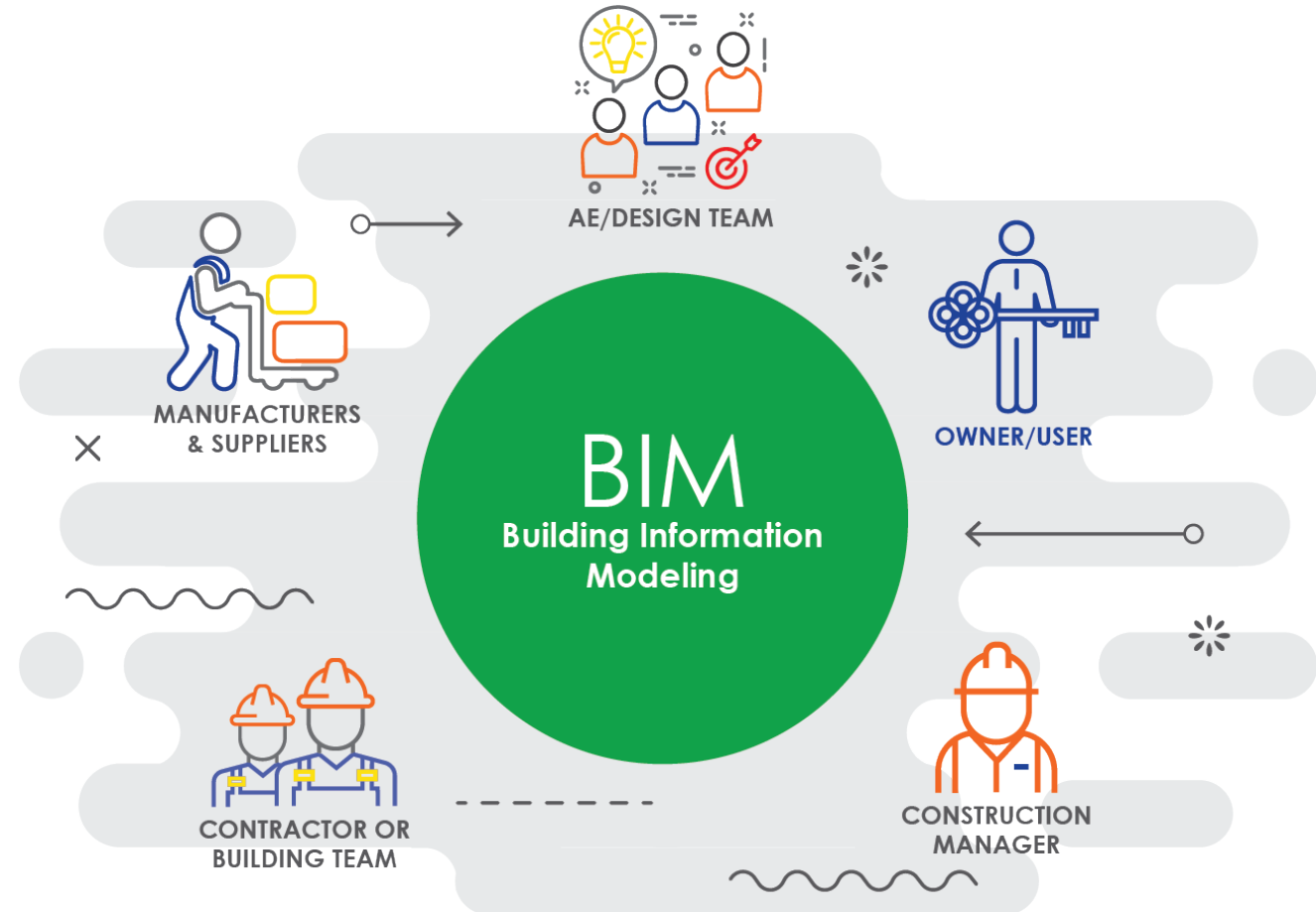
Challenges

- Initial acceptance
- Change management
- Training program development
- Technology investment

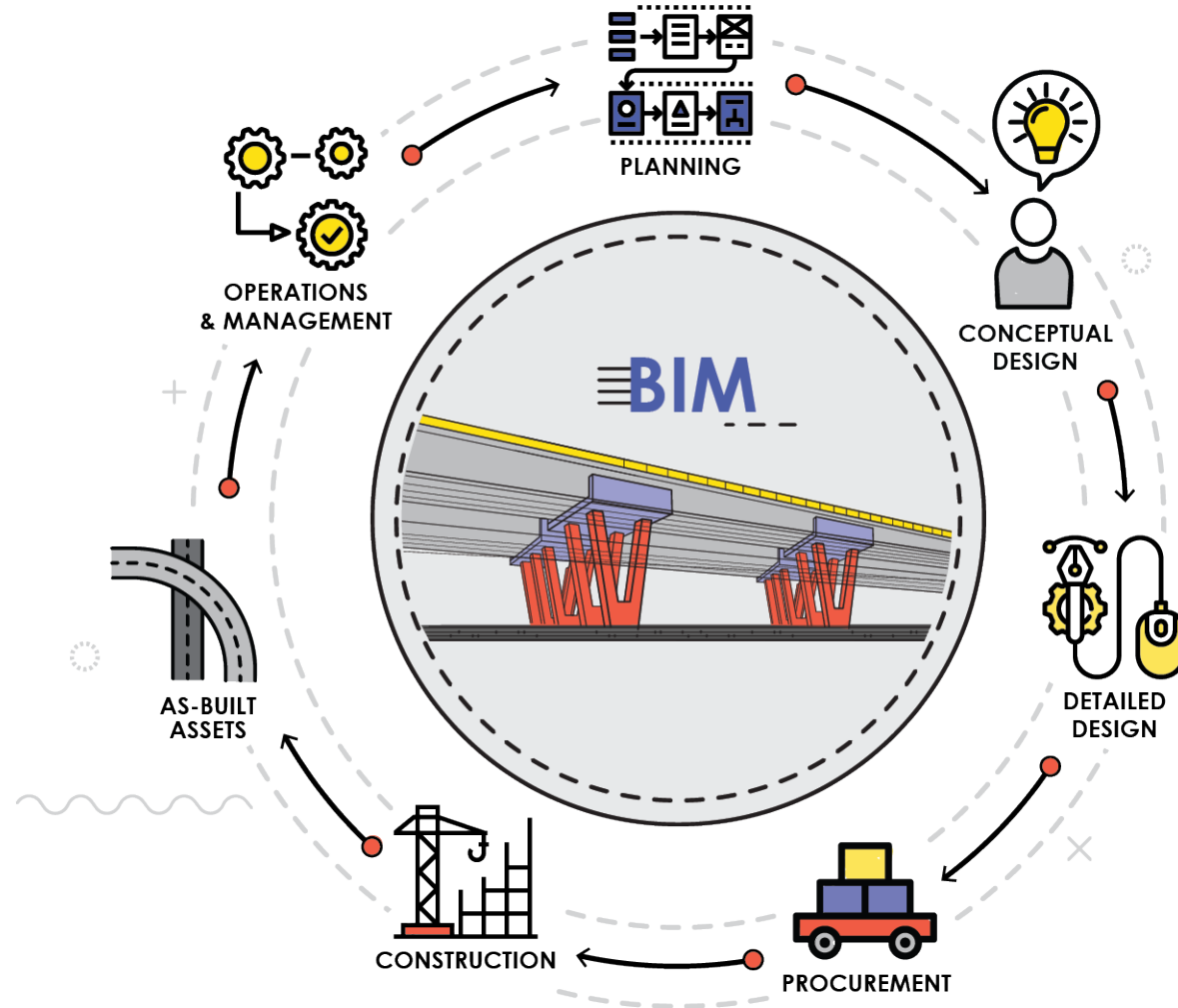


Why Use BIM for Infrastructure?

- Application of innovative technologies, practices, and solutions on the rise for highway project delivery
- A wide range of technologies to improve predictability, performance, transparency (Planning to Operations and Maintenance)
- It's time to analyze and understand the technology adoption at the agency-level, in its entirety!



BIM for Infrastructure Life Cycle





Example Projects

Iowa DOT

Michigan DOT

New York State DOT

Oregon DOT (Selwood Bridge)

Oregon DOT (Selwood Bridge Detour)

Texas DOT

Connecticut DOT

Wisconsin DOT



U.S. Department of Transportation

Federal Highway Administration

Iowa DOT

Location:

- Statewide 3D-engineered model development program

Primary Goal/Focus for Program:

- Use of 3D models for visualization and constructability reviews

Technology Used:

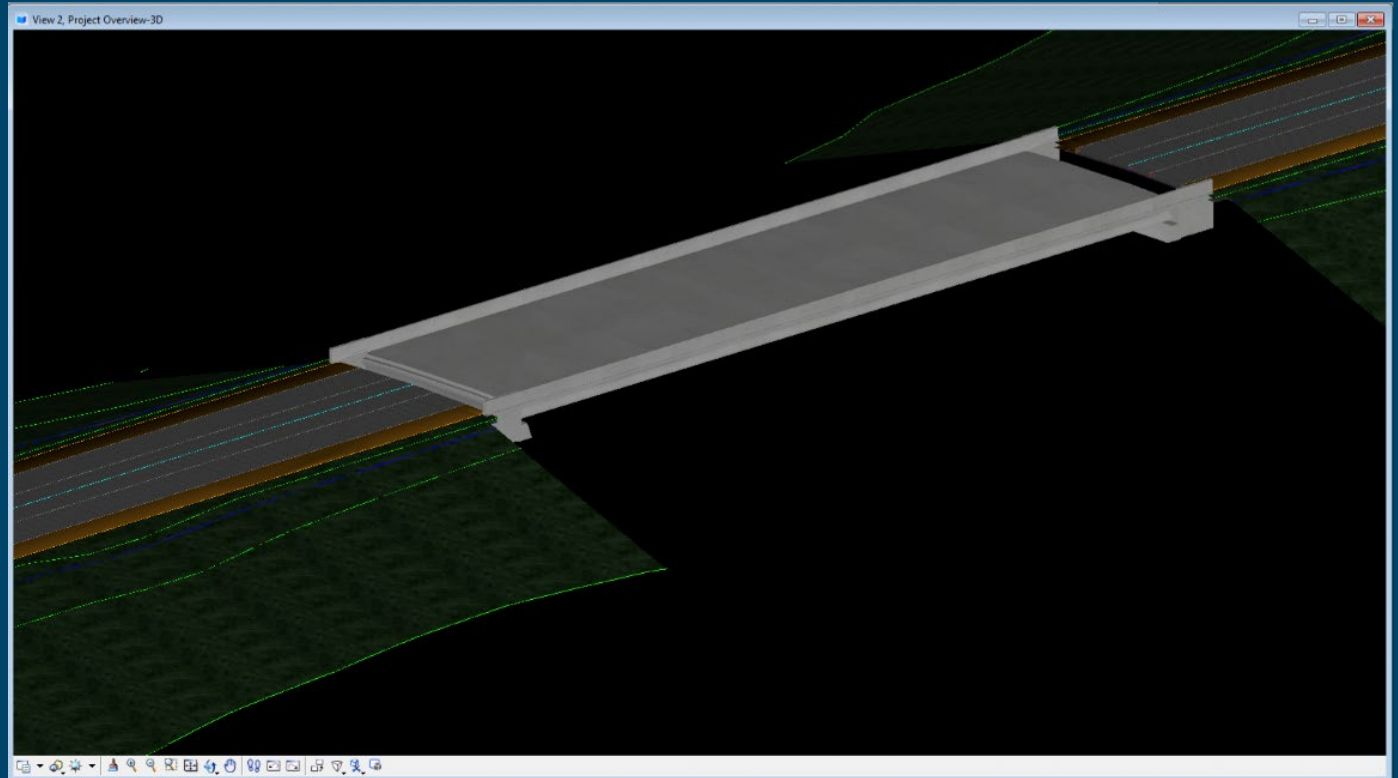
- Discipline-specific 3D models
- Digital delivery

BIM Uses Applied:

- 4D schedule integration
- Visualization
- 3D coordination (clash detection)

Lessons Learned:

- 3D visualizations provided by the contractor for constructability during this five-year project resulted in positive feedback from DOT staff



U.S. Department
of Transportation

**Federal Highway
Administration**



Michigan DOT

Location:

- Statewide 3D engineered model development program

Primary Goal/Focus for Program:

- Use of 3D models for visualization and constructability reviews
- Surface modeling for automated machine guidance

Technology Used:

- Discipline specific 3D models
- Existing conditions modeling

BIM Uses Applied:

- 4D schedule integration
- 3D coordination (clash detection)

Lessons Learned:

- Clash detection and 3D visualizations provided efficiencies in determining constructability of the project



New York State DOT

Location:

- NY17/I-81 Interchange and the Kosciuszko Bridge

Primary Goal/Focus for Program:

- Use of 3D models for visualization

Technology Used:

- Discipline-specific 3D models

BIM Uses Applied:

- 3D model authoring
- Visualization

Lessons Learned:

- Visualization and 3D coordination performed during design phase provided cost saving/avoidance during construction activities

Oregon DOT Selwood Bridge

Location:

- Statewide 3D engineered model development program

Primary Goal/Focus for Program:

- Use of 3D models for visualization and constructability reviews
- Surface modeling for automated machine guidance

Technology Used:

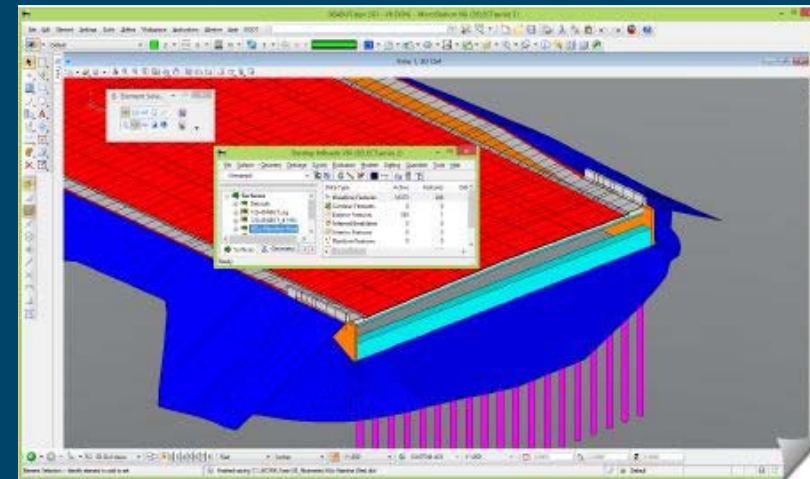
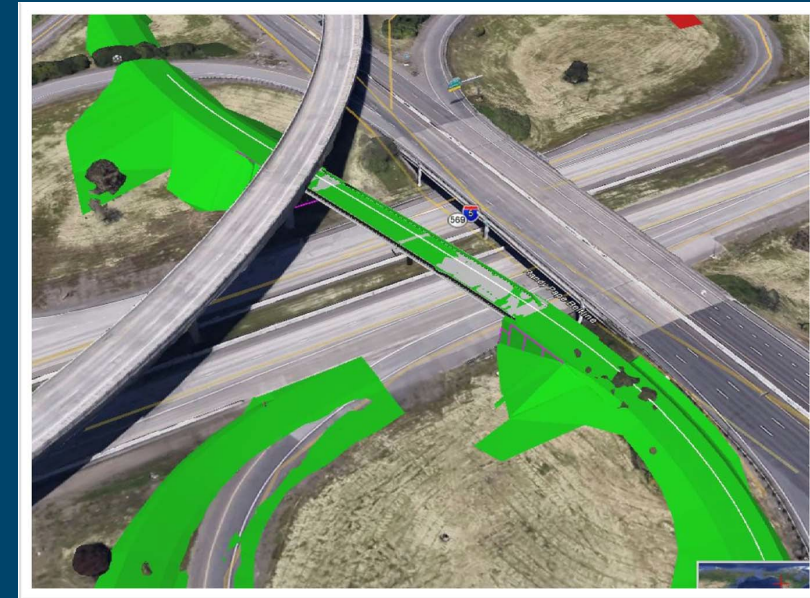
- Discipline specific 3D models
- Existing conditions modeling
- Digital delivery

BIM Uses Applied:

- 4D schedule integration
- 3D coordination (clash detection)

Lessons Learned:

- Clash detection and 3D visualizations provided efficiencies in determining constructability of the project



U.S. Department
of Transportation

**Federal Highway
Administration**

Oregon DOT (Selwood Bridge Detour)

Location:

- Sellwood Bridge, Portland, OR

Primary Goal/Focus for Program:

- Use of 3D models for visualization and constructability reviews

Technology Used:

- Discipline-specific 3D models
- Visualization, video

BIM Uses Applied:

- Visualization
- 3D coordination

Lessons Learned:

- 3D visualizations provided the platform to propose a less expensive, faster, more efficient and safer approach to construct the project.



U.S. Department
of Transportation

**Federal Highway
Administration**





Texas DOT

Location:

- Horseshoe Project I-35/I-30 Interchange, Dallas, TX

Primary Goal/Focus for Program:

- Use of 3D models for visualization

Technology Used:

- Discipline-specific 3D models

BIM Uses Applied:

- 3D model authoring
- Visualization

Lessons Learned:

- 3D visualizations provided by the contractor for constructability during this five-year project resulted in positive feedback from DOT staff

Connecticut DOT

Location:

- I-95 New Haven Harbor Crossing

Primary Goal/Focus for Program:

- Use of 3D models for visualization

Technology Used:

- Discipline-specific 3D models

BIM Uses Applied:

- 3D model authoring
- 4D schedule integration
- Visualization

Lessons Learned:

- 3D visualization and 4D schedule integration provided clarity to the owner and public



Wisconsin DOT

Location:

- Zoo interchange I-94 / I-41 / I-894 corridors

Construction Schedule/Project Cost:

- 2013-2018 (completed) / \$1.7B

Primary Goals/Focus for Project/Program:

- Electronic project delivery
- 3D models used for AMG/grading/paving/structures/utilities
- Conflict/issue resolution in design to reduce costs in field

Technology Used:

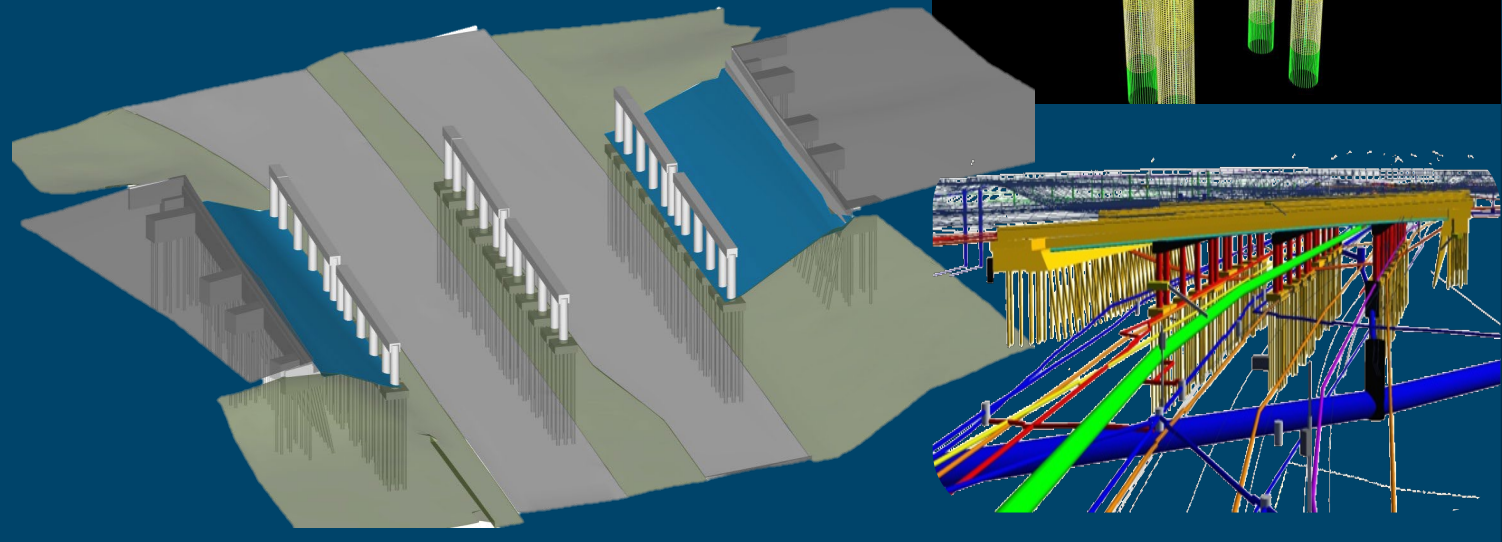
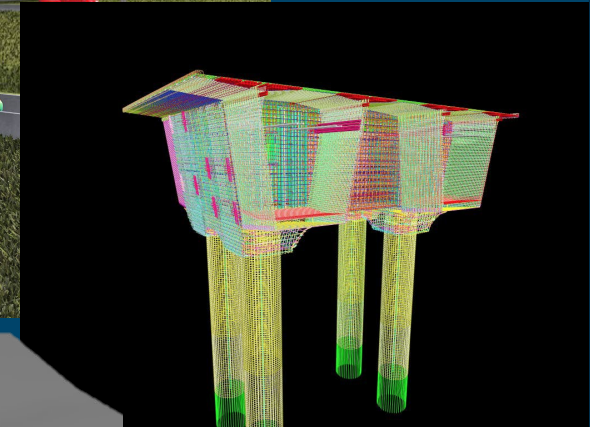
- Full Discipline 3D Design Models
- Mobile-static LiDAR high-accuracy survey existing models
- Integrated CAD-BIM-GIS

BIM Uses Applied:

- 3D/4D design models including staged models
- 3D coordination for discipline clash detection/resolution
- Visualization and cloud-based design-construction reviews

Lessons Learned/ROI:

- 3D coordination and visualization reduced issues in field
- Cost savings/avoidance reduced change order/bid costs
- Plans quality improved and reduced schedule delays



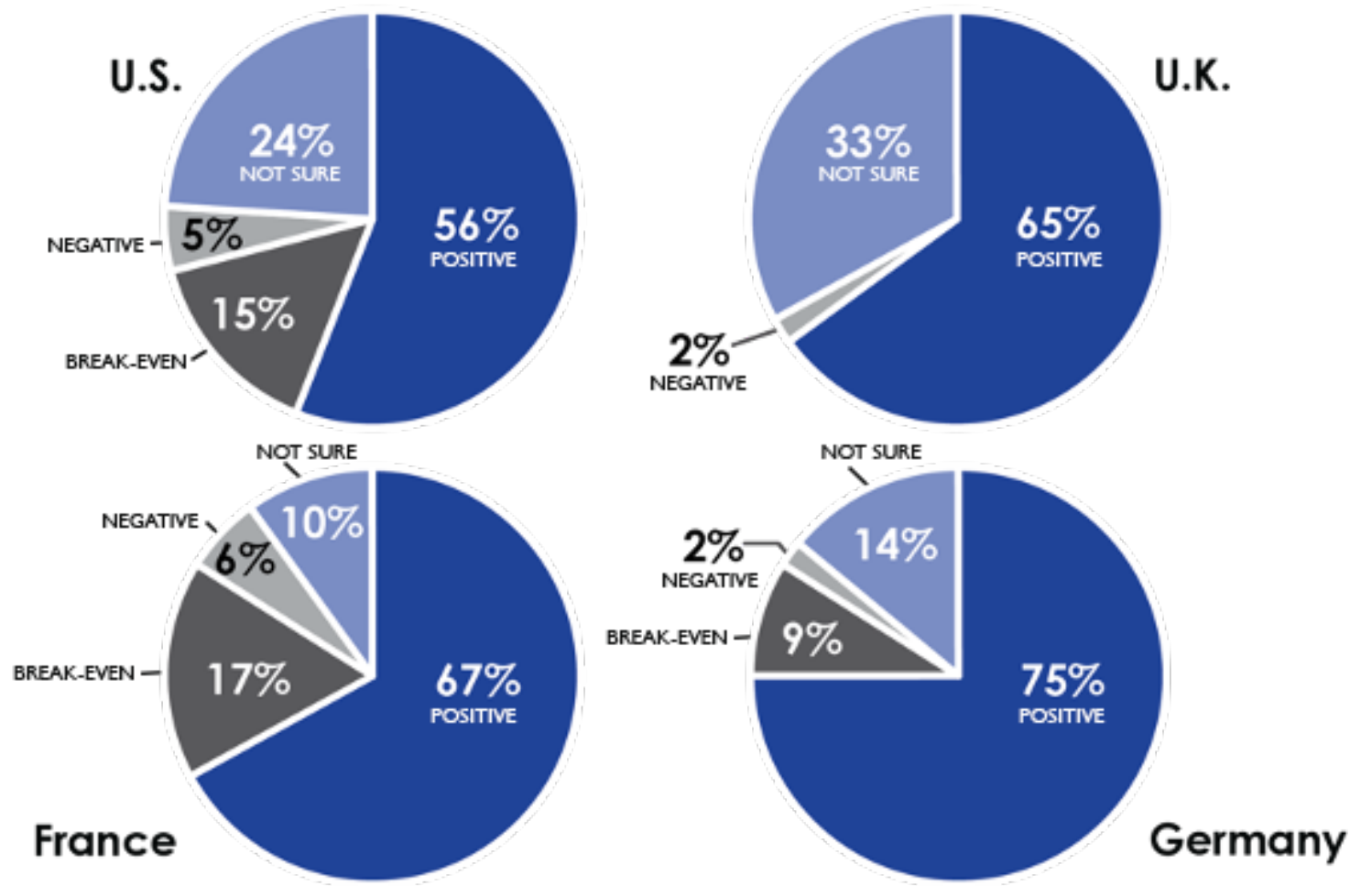
U.S. Department
of Transportation

**Federal Highway
Administration**

Business Value of BIM for Transportation Infrastructure

Perceived ROI on BIM

(According to Engineers and Contractors Using BIM by Country)



Business Value of BIM for Transportation Infrastructure

Nearly two thirds (65%) perceive that they get a positive ROI from their investment in BIM.

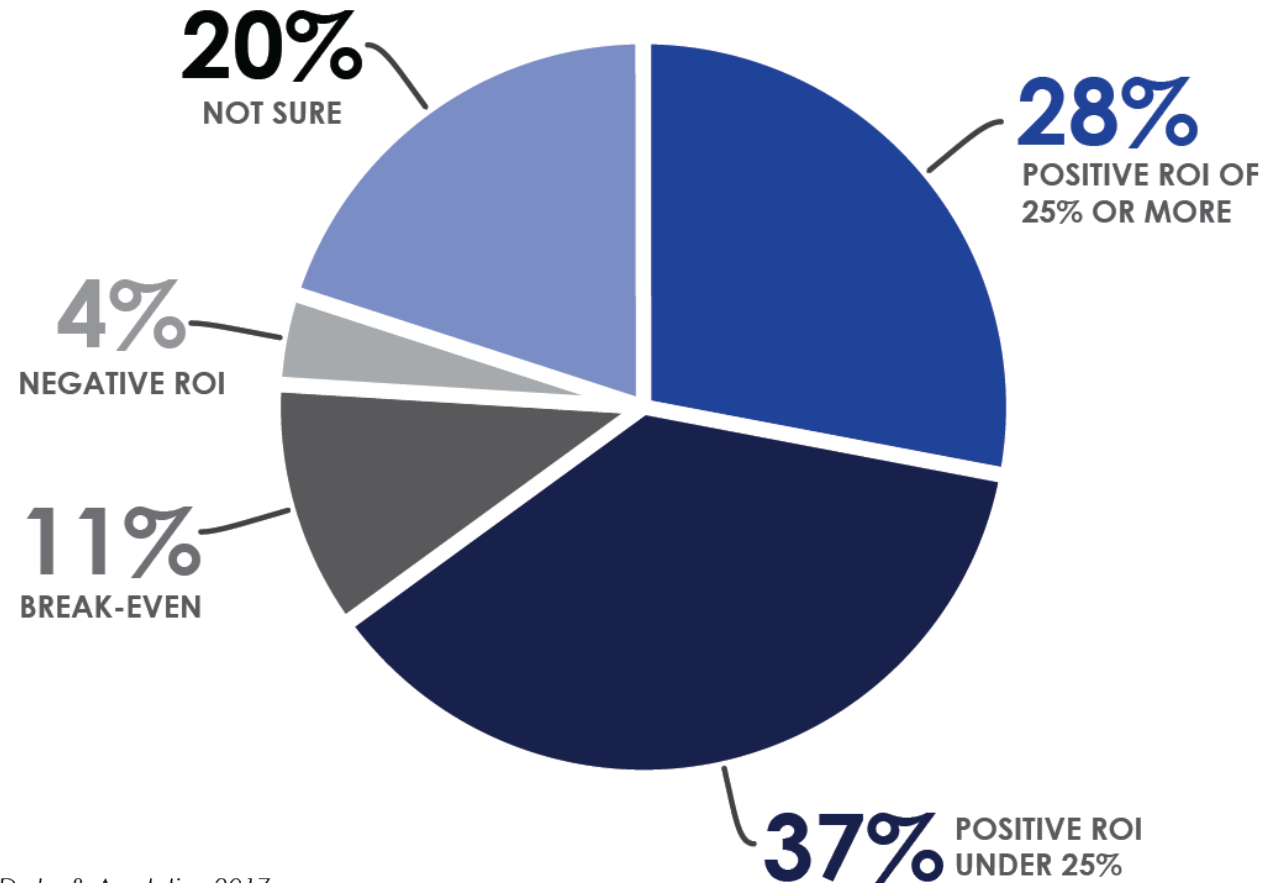
Includes all BIM users surveyed in the U.S., U.K., France, and Germany

U.S. Numbers:

- Positive, 56%
- Break-Even, 15%
- Negative, 5%
- Not Sure, 24%

Perceived ROI on BIM for Transportation Infrastructure

(According to All BIM Users)



Dodge Data & Analytics 2017



U.S. Department of Transportation

Federal Highway Administration

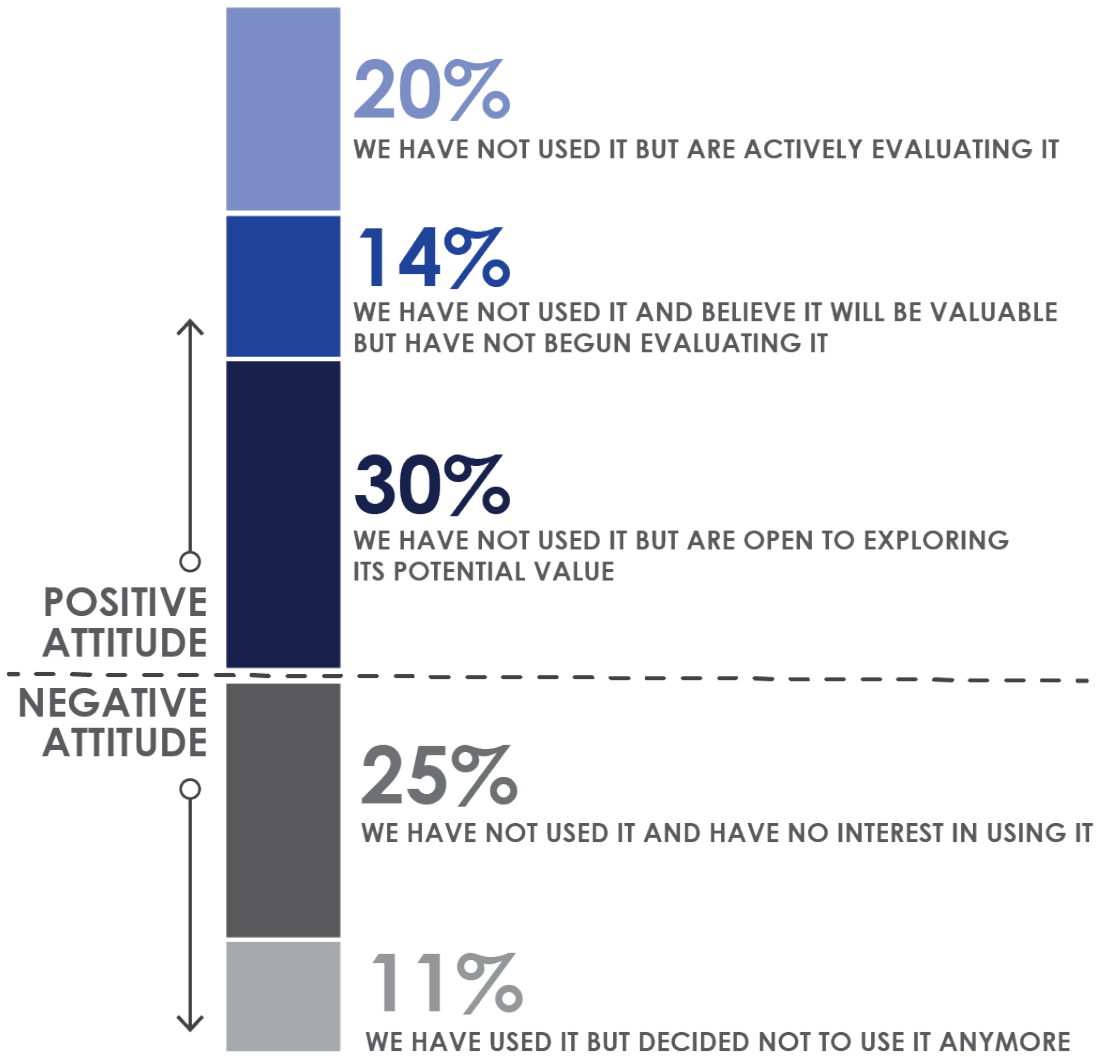
After Laquidara-Carr, D. (managing editor). 2017. *SmartMarket Report: The Business Value of BIM for Infrastructure 2017*. Dodge Data & Analytics, Research & Analytics, Bedford, MA. <https://www2.deloitte.com/content/dam/Deloitte/us/Documents/finance/us-fas-bim-infrastructure.pdf>.

Business Value of BIM for Transportation Infrastructure

What is keeping companies away from BIM?

- Owners are not asking for it, 43%
- Cost required, 31%
- Less Efficient for small projects, 30%
- Training time required, 22%
- Lack of understanding, 21%
- Current software inadequate, 20%

Non-User Attitudes Toward BIM for Transportation Infrastructure Projects

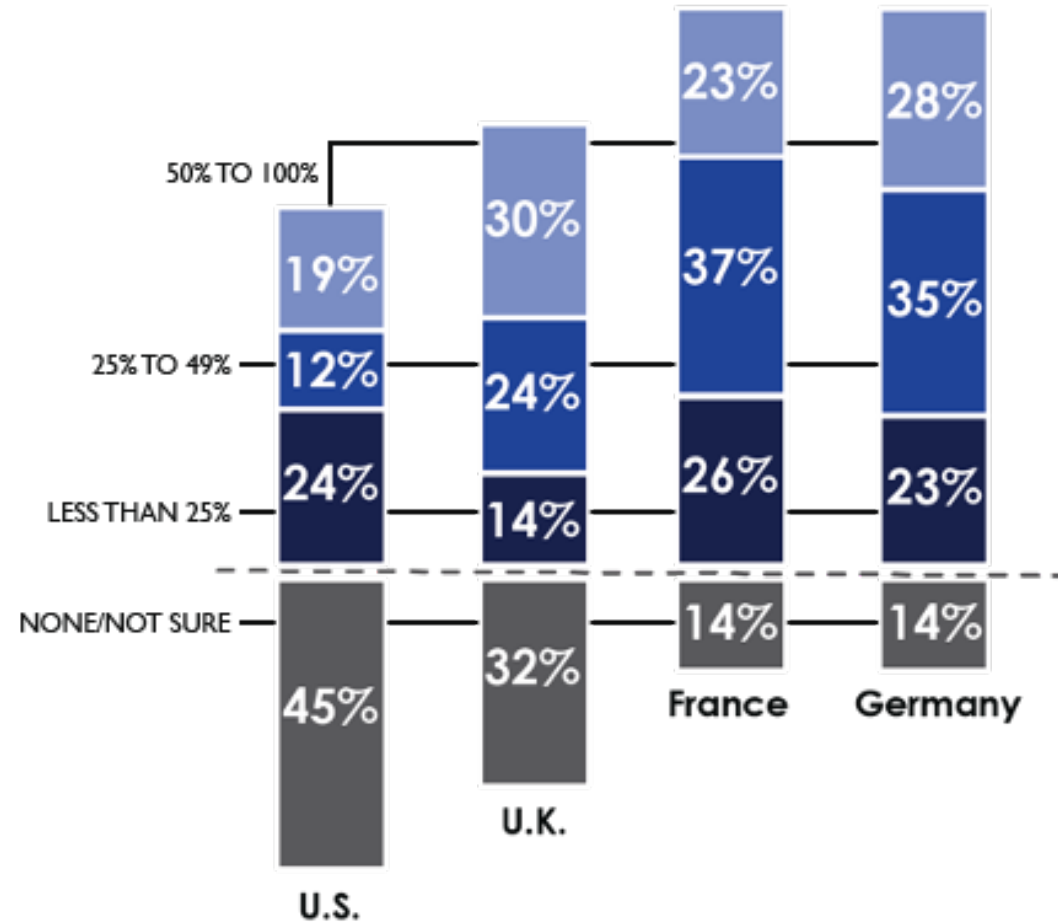


Business Value of BIM for Transportation Infrastructure

“Overall, 74% report that they do formally measure BIM ROI, and measurement occurs on average on about one third (34%) of their projects”

(Dodge Data & Analytics)

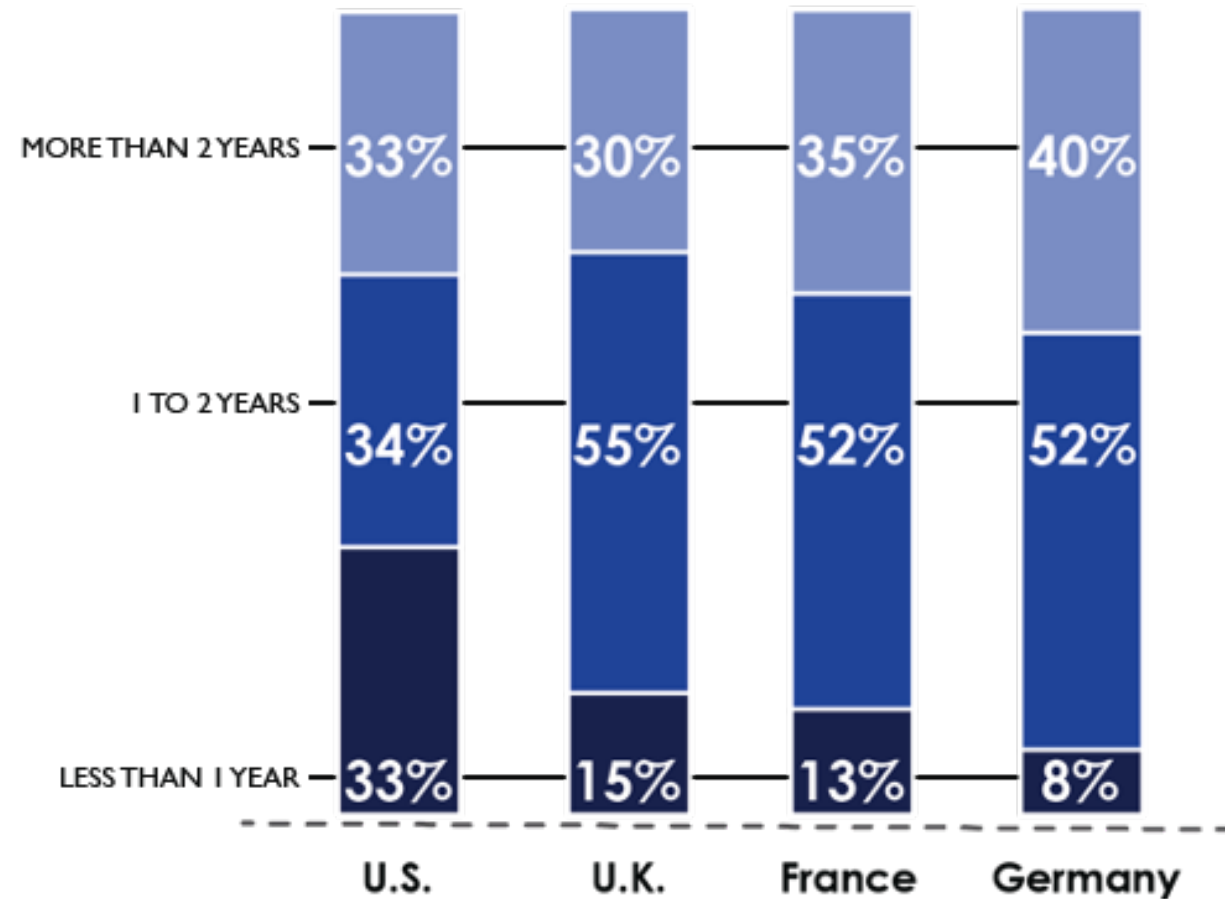
Percentage of Projects on Which ROI is Formally Measured
 (According to Engineers and Contractors Using BIM by Country)



Business Value of BIM for Transportation Infrastructure

Years Measuring BIM ROI

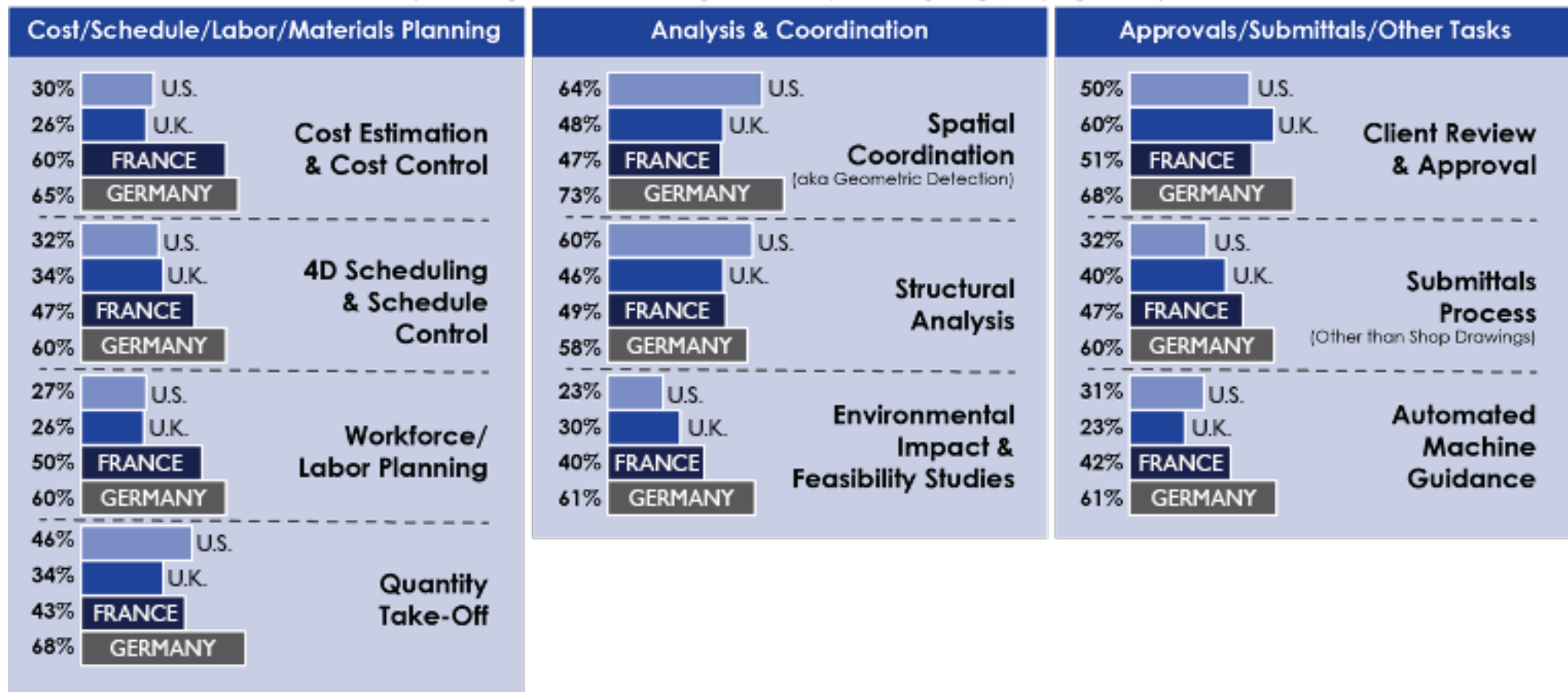
(According to Engineers and Contractors Using BIM by Country)



Lessons Learned

High Value BIM Activities

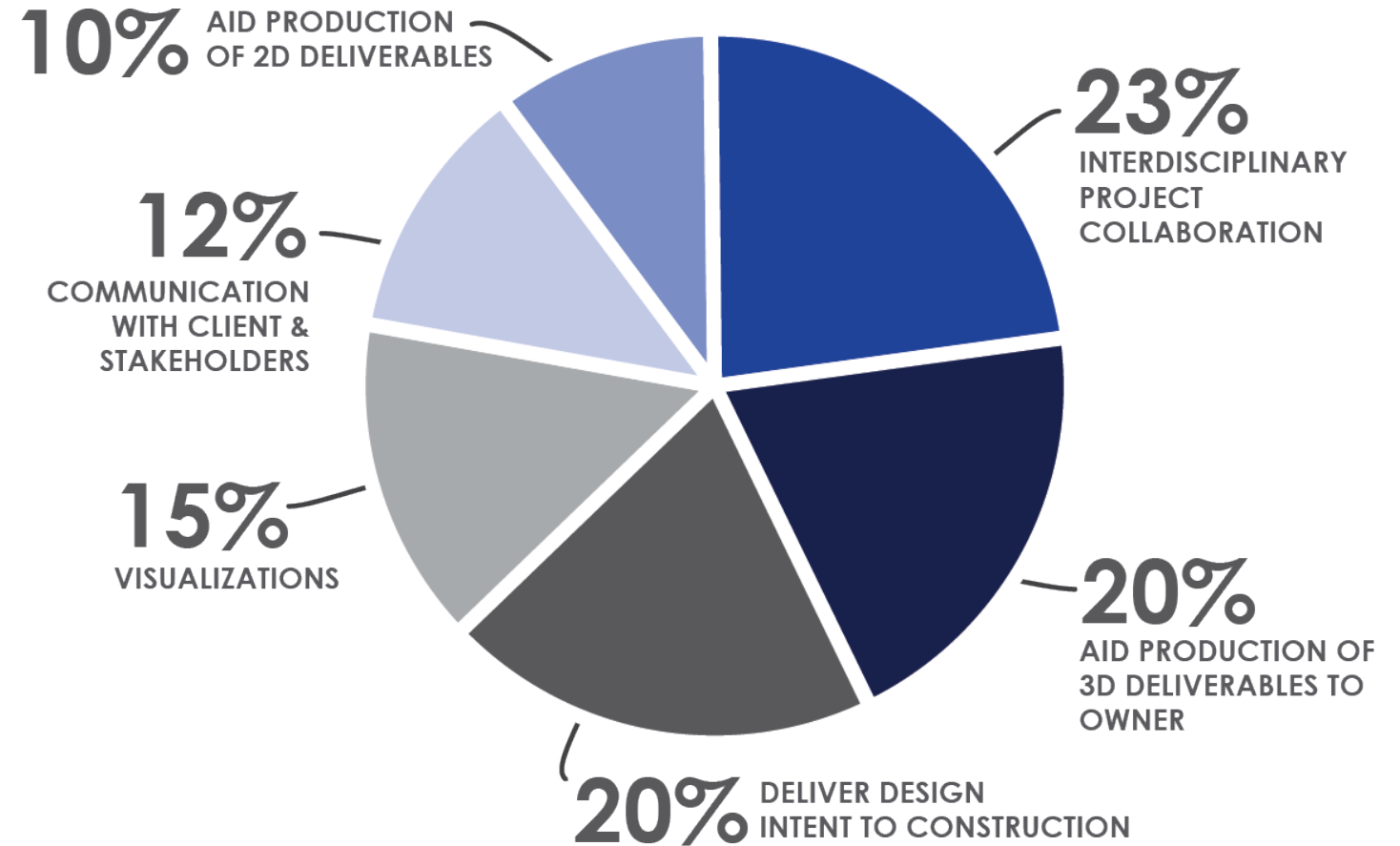
(Percentage of BIM Users Rating Each Activity as Having a High/Very High Value)



Lessons Learned

Most Common Use of BIM Models by Those Not Creating Them

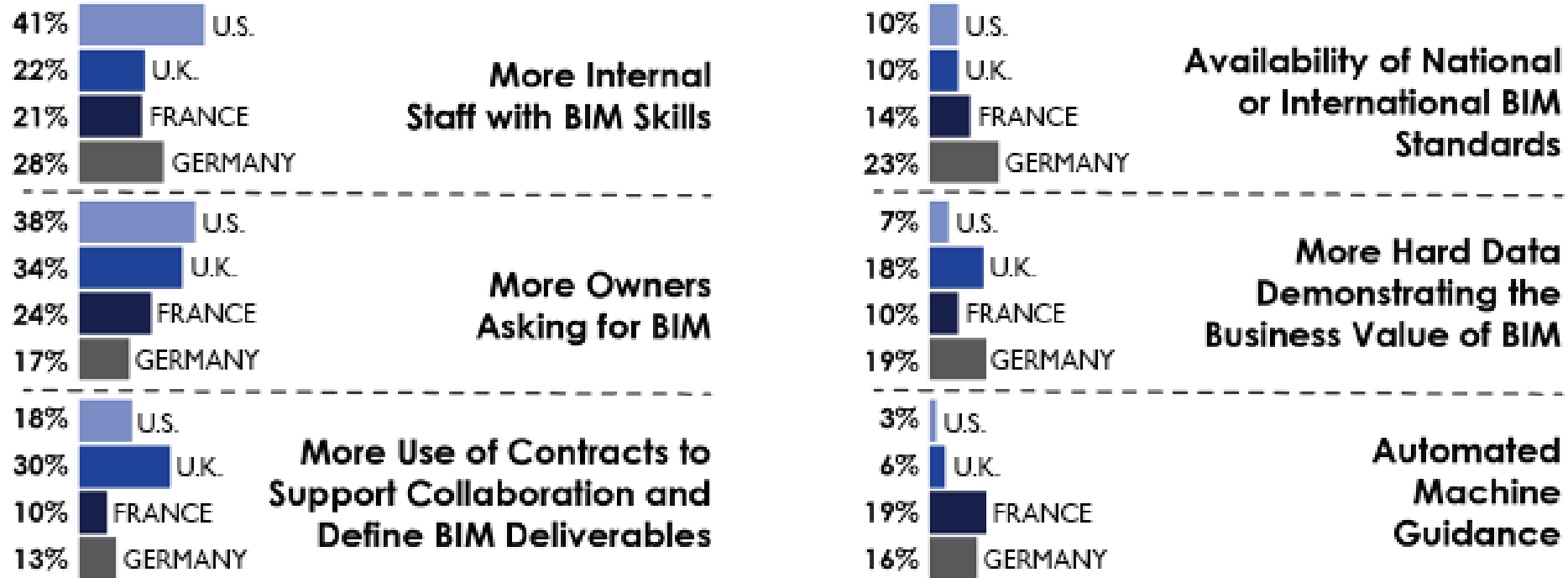
(According to Engineers and Contractors Using BIM)



Lessons Learned

Industry Factors with the Greatest Positive Impact on Increasing the Ability to Experience BIM Benefits on Future Transportation Projects

(Differences by Country)



FHWA BIM for Infrastructure Point of Contact:

Task Manager

Connie Yew, Team Leader

Federal Highway Administration

1200 New Jersey Avenue, S.E.

Washington, DC 20590

(202) 366-1078, connie.yew@dot.gov



U.S. Department
of Transportation

**Federal Highway
Administration**