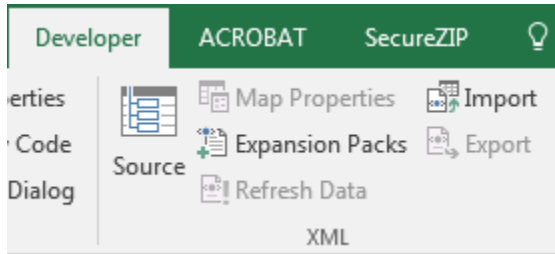
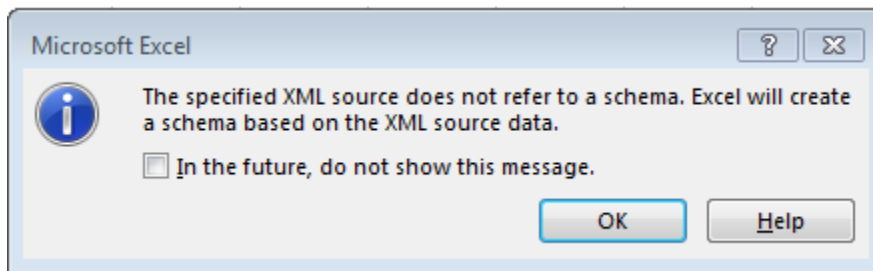


## Import NBI XML Element Data into Excel

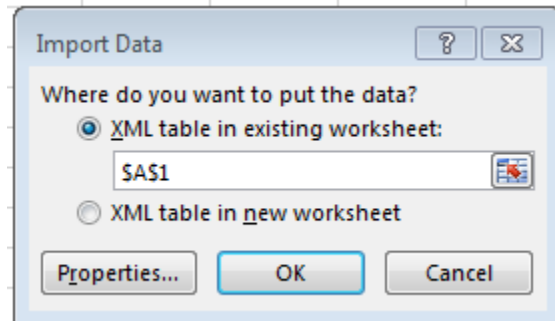
1. Open Excel.
2. Select the Developer tab. If it is not available, you can add it in File/Options/Customize Ribbon
3. In the XML section, select Import:



4. Browse to file and select OK.
5. Select OK for this pop-up:



6. Choose a location for the data and select OK:



7. Enjoy the data!

|    | A     | B        | C   | D        | E     | F   | G   | H   | I   |
|----|-------|----------|-----|----------|-------|-----|-----|-----|-----|
| 1  | STATE | STRUCNUM | EN  | TOTALQTY | CS1   | CS2 | CS3 | CS4 | EPN |
| 2  | 9     | 03471    | 12  | 12303    | 12029 | 224 | 50  | 0   |     |
| 3  | 9     | 03471    | 107 | 1490     | 894   | 93  | 500 | 3   |     |
| 4  | 9     | 03471    | 205 | 12       | 8     | 4   | 0   | 0   |     |
| 5  | 9     | 03471    | 210 | 220      | 178   | 42  | 0   | 0   |     |
| 6  | 9     | 03471    | 215 | 216      | 173   | 43  | 0   | 0   |     |
| 7  | 9     | 03471    | 310 | 18       | 0     | 10  | 8   | 0   |     |
| 8  | 9     | 03471    | 313 | 18       | 0     | 6   | 12  | 0   |     |
| 9  | 9     | 03471    | 330 | 518      | 377   | 130 | 11  | 0   |     |
| 10 | 9     | 03471    | 331 | 518      | 309   | 209 | 0   | 0   |     |