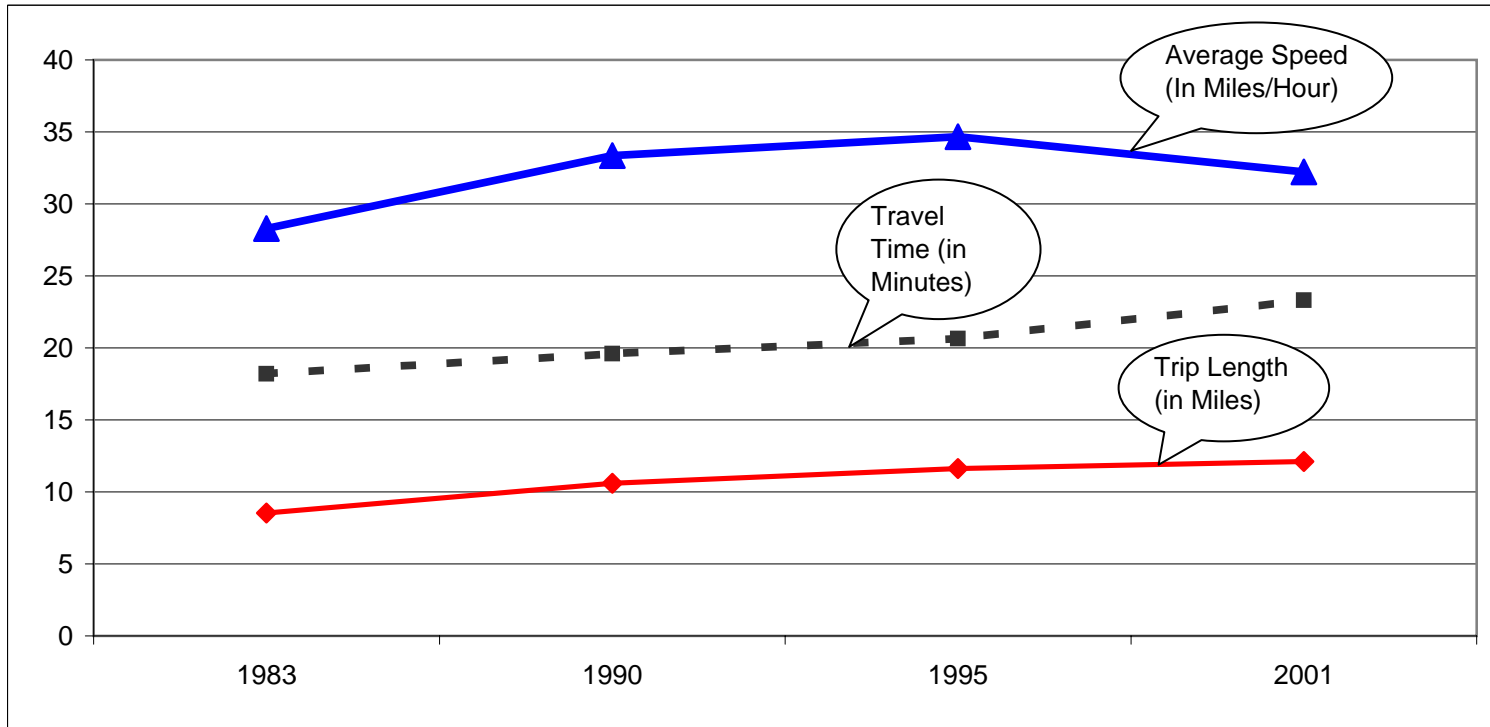


NT-3. Trip Length, Travel Time, and Speed: 1983-2001



	1983	1990	1995	2001
Trip Length (Miles)	8.54	10.61	11.63	12.11
Travel Time (Minutes)	18.2	19.6	20.65	23.32
Commute Speed (Miles/Hour)	28.28	33.35	34.67	32.23