



U. S. Department of Transportation

Federal Highway Administration

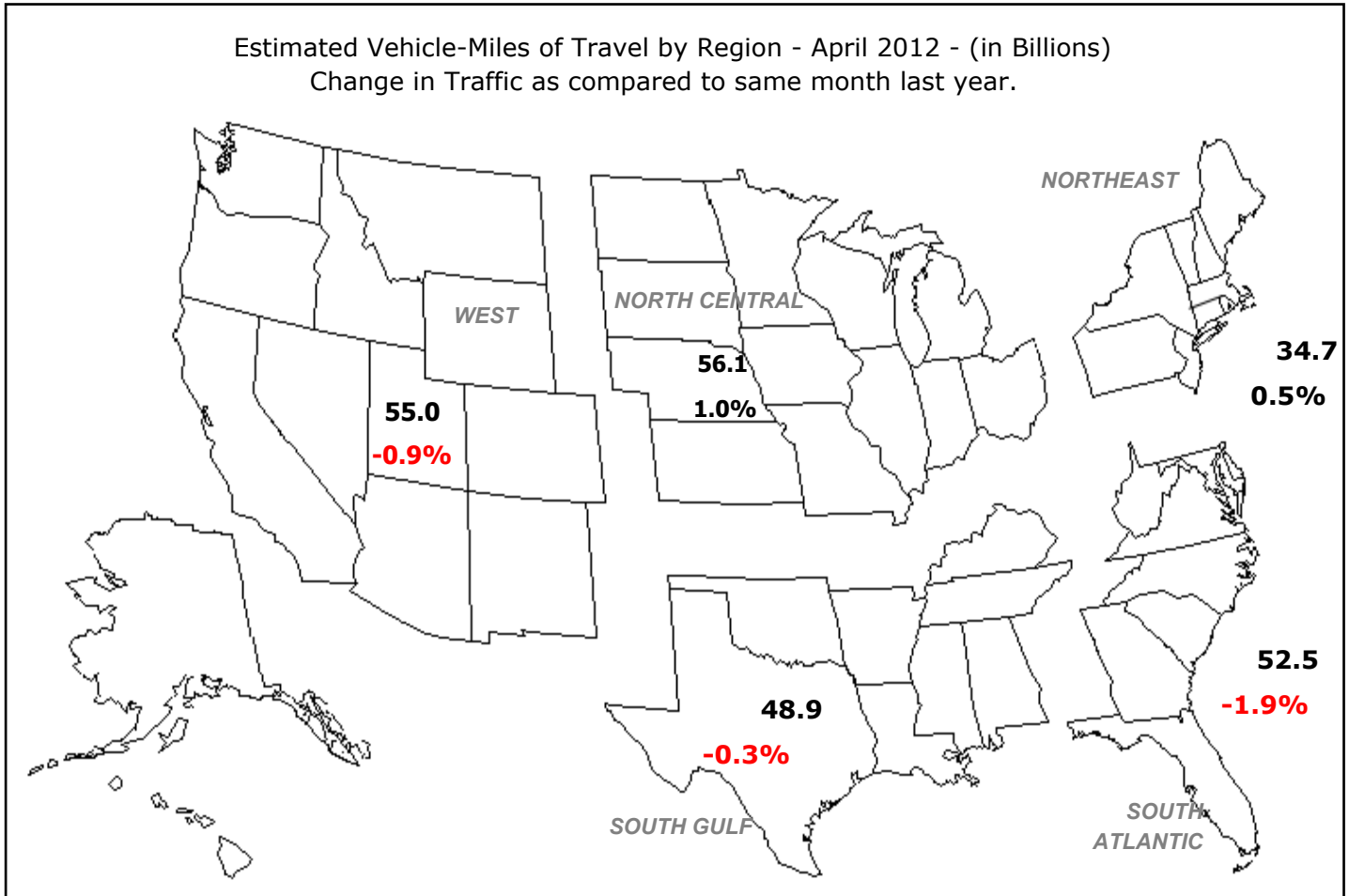
Office of Highway Policy Information

# TRAFFIC VOLUME TRENDS

## April 2012

Travel on all roads and streets changed by **-0.4%** (-1.0 billion vehicle miles) for April 2012 as compared with April 2011. Travel for the month is estimated to be 247.2 billion vehicle miles.

Cumulative Travel for 2012 changed by **+0.9%** (8.6 billion vehicle miles). The Cumulative estimate for the year is 939.4 billion vehicle miles of travel.



Note: All data for this month are preliminary. Revised values for the previous month are shown in Tables 1 and 2

All vehicle-miles of travel computed with 2010 Table VM-2 as a base.

Compiled with data on hand as of June 12, 2012.

Some historical data were revised based on HPMS and amended TVT data as of December 2009.

For information on total licensed drivers in the U.S. visit <http://www.fhwa.dot.gov/policy/ohpi/hss/hsspubs.htm>.

Select the year of interest then Section III (Driver Licensing).

For information on total registered motor vehicles in the U.S., visit <http://www.fhwa.dot.gov/policy/ohpi/hss/hsspubs.htm>

Select the year of interest and Section II (Motor Vehicles).

Based on preliminary reports from the State Highway Agencies, travel during April 2012 on all roads and streets in the nation changed by **-0.4** percent (-1.0 billion vehicle miles) resulting in estimated travel for the month at **247.2\*\*** billion vehicle-miles.

This total includes **80.9** billion vehicle-miles on rural roads and **166.4** billion vehicle-miles on urban roads and streets.

Cumulative Travel changed by **+0.9** percent (8.6 billion vehicle miles).

The larger changes to rural and urban travel are primarily because of the expansion in urban boundaries reflected in the 2000 census. Travel estimates for 2004 and beyond will also reflect this adjustment.

Travel for the current month, the cumulative yearly total, as well as the moving 12-month total on all roads and streets is shown below. Similar totals for each year since 1987 are also included.

Travel in Millions of Vehicle Miles

All Roads and Streets

Year	April	Year to Date	Moving 12-Month
1987	159,801	593,289	1,873,545
1988	166,804	625,267	1,956,306
1989	174,320	655,793	2,056,112
1990	179,033	674,963	2,126,210
1991	179,538	669,854	2,142,392
1992	186,069	697,702	2,200,062
1993	188,737	711,130	2,260,579
1994	195,407	727,355	2,312,930
1995	198,213	764,330	2,394,562
1996	205,253	769,452	2,427,897
1997	211,290	797,319	2,510,068
1998	217,921	816,180	2,579,234
1999	220,996	826,825	2,636,008
2000	227,698	862,891	2,715,525
2001	232,513	875,662	2,759,697
2002	237,226	896,748	2,816,697
2003	239,415	898,305	2,857,067
2004	250,968	938,530	2,930,447
2005	250,860	948,085	2,974,344
2006	250,665	961,342	3,002,687
2007	252,734	965,494	3,018,523
2008	252,699	960,669	3,026,299
2009	251,481	941,785	2,957,644
2010	253,971	936,858	2,951,835
2011	248,207	930,844	2,960,472
2012	247,244	939,398	2,939,209

Traffic Volume Trends is a monthly report based on hourly traffic count data. These data, collected at approximately 4,000 continuous traffic counting locations nationwide, are used to determine the percent change in traffic for the current month compared to the same month in the previous year. This percent change is applied to the travel for the same month of the previous year to obtain an estimate of travel for the current month. Because of the limited sample sizes, caution should be used with these estimates. The Highway Performance Monitoring System provides more accurate information on an annual basis.

\*\* System entries may not add to give "All Systems" total due to rounding for Page 2 to 8.

**Table - 1. Estimated Individual Monthly Motor Vehicle Travel in the United States\*\***

System	Month											
	JAN	FEB	MAR	APR	MAY	JUN	JUL	AUG	SEP	OCT	NOV	DEC
2011 Individual Monthly Vehicle-Miles of Travel in Billions												
Rural Interstate	17.5	16.5	19.8	20.4	21.1	21.3	23.2	22.3	20.0	20.6	19.6	19.8
Rural Other Arterial	26.7	25.9	30.5	30.5	32.0	33.0	35.1	34.1	31.5	32.4	29.8	29.6
Other Rural	26.1	24.9	30.0	30.1	31.2	32.0	32.8	32.1	29.6	30.9	27.8	27.8
Urban Interstate	36.0	34.5	40.5	40.1	41.2	42.3	40.2	41.3	39.4	40.3	39.4	40.1
Urban Other Arterial	80.5	77.2	89.9	88.6	88.6	89.4	89.2	91.1	84.3	89.4	84.6	87.8
Other Urban	34.4	33.2	38.4	38.6	38.7	38.5	38.6	38.4	35.9	37.1	36.0	38.6
All Systems	221.3	212.2	249.1	248.2	252.7	256.5	259.1	259.4	240.7	250.7	237.2	243.6
2012 Individual Monthly Vehicle-Miles of Travel in Billions												
Rural Interstate	17.6	16.8	20.0	20.4								
Rural Other Arterial	27.2	26.4	31.2	30.5								
Other Rural	26.5	25.3	30.4	30.0								
Urban Interstate	36.8	35.5	40.8	40.1								
Urban Other Arterial	81.7	78.4	90.4	88.1								
Other Urban	35.1	33.6	38.5	38.1								
All Systems	224.8	216.0	251.3	247.2								
* Percent Change In Individual Monthly Travel 2011 vs. 2012												
Rural Interstate	0.9	2.0	1.1	-0.3								
Rural Other Arterial	1.6	1.8	2.1	0.2								
Other Rural	1.4	1.7	1.5	-0.3								
Urban Interstate	2.2	2.9	0.7	0.2								
Urban Other Arterial	1.5	1.5	0.5	-0.6								
Other Urban	1.8	1.4	0.3	-1.2								
All Systems	1.6	1.8	0.9	-0.4								

**Table - 2. Estimated Cumulative Monthly Motor Vehicle Travel in the United States\*\***

System	Month											
	JAN	FEB	MAR	APR	MAY	JUN	JUL	AUG	SEP	OCT	NOV	DEC
2011 Cumulative Monthly Vehicle-Miles of Travel in Billions												
Rural Interstate	17.5	34.0	53.8	74.2	95.3	116.6	139.8	162.1	182.1	202.7	222.3	242.1
Rural Other Arterial	26.7	52.7	83.2	113.7	145.7	178.7	213.8	247.9	279.4	311.8	341.6	371.2
Other Rural	26.1	51.0	81.0	111.1	142.3	174.3	207.1	239.3	268.9	299.7	327.6	355.4
Urban Interstate	36.0	70.5	111.0	151.0	192.3	234.6	274.8	316.1	355.4	395.8	435.1	475.2
Urban Other Arterial	80.5	157.7	247.6	336.2	424.8	514.2	603.4	694.5	778.8	868.1	952.7	1040.5
Other Urban	34.4	67.6	106.0	144.6	183.2	221.7	260.3	298.7	334.6	371.7	407.7	446.3
All Systems	221.3	433.5	682.6	930.8	1183.6	1440.1	1699.2	1958.5	2199.2	2449.8	2687.0	2930.7
2012 Cumulative Monthly Vehicle-Miles of Travel in Billions												
Rural Interstate	17.6	34.5	54.5	74.9								
Rural Other Arterial	27.2	53.6	84.7	115.3								
Other Rural	26.5	51.8	82.2	112.2								
Urban Interstate	36.8	72.3	113.1	153.2								
Urban Other Arterial	81.7	160.1	250.4	338.5								
Other Urban	35.1	68.7	107.1	145.3								
All Systems	224.8	440.9	692.2	939.4								
* Percent Change In Cumulative Monthly Travel 2011 vs. 2012												
Rural Interstate	0.9	1.4	1.3	0.9								
Rural Other Arterial	1.6	1.7	1.8	1.4								
Other Rural	1.4	1.5	1.5	1.0								
Urban Interstate	2.2	2.5	1.9	1.4								
Urban Other Arterial	1.5	1.5	1.1	0.7								
Other Urban	1.8	1.6	1.1	0.5								
All Systems	1.6	1.7	1.4	0.9								

\*Percent change is based on vehicle travel in millions of miles.

Table - 3. Changes on Rural Arterial Roads by Region and State\*\*

Region and State	April				March			
	Number of Stations	Vehicle-Miles (Millions)		Percent Change	Number of Stations	Vehicle-Miles (Millions)		Percent Change
		2012 (Preliminary)	2011			2012 (Revised)	2011	
<b>Northeast</b>								
Connecticut	6	162	161	0.1	6	160	160	0.1
Maine	71	465	463	0.5	71	472	479	-1.4
Massachusetts	12	206	203	1.3	10	204	205	-0.5
New Hampshire	30	278	276	0.7	31	275	279	-1.4
New Jersey	23	372	375	-0.9	20	378	372	1.8
New York	55	1,136	1,134	0.2	53	1,195	1,161	3.0
Pennsylvania	36	1,961	1,938	1.2	36	1,925	1,869	3.0
Rhode Island	-	51	51	-0.1	-	45	45	0.3
Vermont	35	217	218	-0.7	38	223	223	0.0
Subtotal		<b>4,848</b>	<b>4,819</b>	<b>0.6</b>		<b>4,877</b>	<b>4,793</b>	<b>1.8</b>
<b>South Atlantic</b>								
Delaware	24	124	124	0.4	23	114	112	2.3
District of Columbia	-	0	0	0.0	-	0	0	0.0
Florida	102	1,958	2,028	-3.4	105	2,176	2,154	1.0
Georgia	70	2,012	2,060	-2.3	70	1,994	1,973	1.1
Maryland	25	737	742	-0.7	24	766	759	0.8
North Carolina	15	1,521	1,531	-0.6	15	1,558	1,500	3.9
South Carolina	71	1,349	1,359	-0.7	72	1,378	1,343	2.6
Virginia	276	1,697	1,707	-0.6	274	1,753	1,714	2.3
West Virginia	-	655	651	0.6	-	784	769	2.0
Subtotal		<b>10,053</b>	<b>10,202</b>	<b>-1.5</b>		<b>10,523</b>	<b>10,324</b>	<b>1.9</b>
<b>North Central</b>								
Illinois	-	1,332	1,313	1.4	5	1,340	1,314	2.0
Indiana	30	1,386	1,351	2.6	30	1,293	1,265	2.2
Iowa	81	1,079	1,069	1.0	85	1,063	1,032	3.0
Kansas	63	807	805	0.2	66	797	777	2.6
Michigan	62	1,628	1,592	2.2	62	1,656	1,605	3.2
Minnesota	38	1,341	1,329	0.9	39	1,284	1,226	4.7
Missouri	80	1,451	1,467	-1.1	80	1,315	1,302	1.0
Nebraska	35	690	677	2.0	37	679	640	6.0
North Dakota	27	389	352	10.5	26	384	344	11.5
Ohio	48	1,676	1,648	1.7	48	1,656	1,626	1.9
South Dakota	31	383	380	0.9	29	401	383	4.6
Wisconsin	70	1,458	1,414	3.1	80	1,437	1,408	2.0
Subtotal		<b>13,620</b>	<b>13,397</b>	<b>1.7</b>		<b>13,305</b>	<b>12,922</b>	<b>3.0</b>
<b>South Gulf</b>								
Alabama	19	1,518	1,521	-0.2	25	1,498	1,480	1.2
Arkansas	-	817	822	-0.5	29	1,004	1,001	0.3
Kentucky	32	1,541	1,517	1.6	34	1,466	1,439	1.8
Louisiana	5	898	926	-3.0	6	858	893	-4.0
Mississippi	43	1,050	1,072	-2.1	43	1,111	1,104	0.6
Oklahoma	-	1,159	1,142	1.5	-	1,104	1,083	1.9
Tennessee	9	1,438	1,474	-2.5	7	1,747	1,737	0.6
Texas	111	3,996	3,945	1.3	117	4,325	4,224	2.4
Subtotal		<b>12,417</b>	<b>12,419</b>	<b>0.0</b>		<b>13,113</b>	<b>12,961</b>	<b>1.2</b>
<b>West</b>								
Alaska	34	99	100	-1.1	35	91	94	-3.6
Arizona	56	1,006	1,013	-0.7	58	929	933	-0.4
California	42	3,474	3,546	-2.0	19	3,055	3,030	0.8
Colorado	73	819	813	0.7	74	958	928	3.3
Hawaii	7	103	103	0.3	7	103	104	-0.3
Idaho	93	416	417	-0.2	102	404	401	0.8
Montana	53	431	414	4.1	54	416	402	3.5
Nevada	32	310	310	0.2	34	304	303	0.5
New Mexico	60	692	703	-1.6	59	726	736	-1.3
Oregon	104	825	832	-0.8	106	800	827	-3.3
Utah	43	466	469	-0.4	45	460	453	1.5
Washington	48	988	1,005	-1.7	45	809	833	-2.8
Wyoming	-	347	343	1.1	-	337	326	3.3
Subtotal		<b>9,976</b>	<b>10,068</b>	<b>-0.9</b>		<b>9,392</b>	<b>9,370</b>	<b>0.2</b>
<b>TOTALS</b>	<b>2,280</b>	<b>50,914</b>	<b>50,905</b>	<b>0.0</b>	<b>2,334</b>	<b>51,210</b>	<b>50,370</b>	<b>1.7</b>

Note: Where Number of Stations are shown as dashes, the values for the Vehicle-Miles and Percent Change are derived from the estimated VMT based on data from surrounding States or the nationwide average VMT.

Table - 4. Changes on Urban Arterial Roads by Region and State\*\*

Region and State	April				March			
	Number of Stations	Vehicle-Miles (Millions)		Percent Change	Number of Stations	Vehicle-Miles (Millions)		Percent Change
		2012 (Preliminary)	2011			2012 (Revised)	2011	
<b>Northeast</b>								
Connecticut	25	1,728	1,714	0.8	24	1,754	1,744	0.6
Maine	13	201	193	3.9	13	223	218	2.3
Massachusetts	53	2,919	2,893	0.9	52	3,376	3,376	0.0
New Hampshire	25	497	489	1.6	25	497	500	-0.5
New Jersey	70	4,421	4,382	0.9	75	4,606	4,532	1.6
New York	94	6,140	6,171	-0.5	91	6,561	6,485	1.2
Pennsylvania	21	4,022	4,033	-0.3	22	4,188	4,108	1.9
Rhode Island	39	477	477	-0.1	44	478	476	0.3
Vermont	15	99	98	0.2	15	99	97	2.7
Subtotal		<b>20,504</b>	<b>20,450</b>	<b>0.3</b>		<b>21,782</b>	<b>21,536</b>	<b>1.1</b>
<b>South Atlantic</b>								
Delaware	15	382	367	4.1	15	374	360	3.7
District of Columbia	-	225	229	-1.9	-	247	247	-0.1
Florida	137	8,443	8,585	-1.6	138	9,183	9,087	1.1
Georgia	98	4,257	4,305	-1.1	105	4,264	4,215	1.2
Maryland	41	2,955	2,984	-1.0	40	3,059	3,047	0.4
North Carolina	22	3,556	3,587	-0.9	22	4,073	4,035	0.9
South Carolina	38	1,713	1,740	-1.5	40	1,818	1,805	0.7
Virginia	341	3,513	3,586	-2.1	338	3,524	3,531	-0.2
West Virginia	-	531	535	-0.8	-	682	675	1.0
Subtotal		<b>25,575</b>	<b>25,918</b>	<b>-1.3</b>		<b>27,224</b>	<b>27,002</b>	<b>0.8</b>
<b>North Central</b>								
Illinois	9	5,473	5,411	1.2	13	5,150	5,173	-0.4
Indiana	26	2,556	2,532	0.9	23	2,357	2,362	-0.2
Iowa	34	791	798	-0.9	39	792	778	1.8
Kansas	18	972	992	-2.0	19	946	944	0.2
Michigan	53	4,470	4,427	1.0	53	4,724	4,673	1.1
Minnesota	27	2,140	2,119	1.0	27	2,193	2,099	4.5
Missouri	58	2,274	2,291	-0.7	55	2,361	2,316	2.0
Nebraska	13	561	555	1.2	13	577	560	3.1
North Dakota	9	145	138	4.7	8	134	129	3.9
Ohio	83	4,430	4,413	0.4	85	4,540	4,494	1.0
South Dakota	9	158	159	-0.5	10	166	161	3.2
Wisconsin	42	2,015	1,959	2.9	56	2,148	2,065	4.0
Subtotal		<b>25,985</b>	<b>25,794</b>	<b>0.7</b>		<b>26,088</b>	<b>25,754</b>	<b>1.3</b>
<b>South Gulf</b>								
Alabama	22	1,802	1,827	-1.4	12	1,863	1,837	1.4
Arkansas	-	868	872	-0.4	11	961	972	-1.1
Kentucky	6	1,451	1,399	3.7	6	1,385	1,330	4.1
Louisiana	-	1,721	1,810	-4.9	1	1,866	1,909	-2.3
Mississippi	28	985	1,000	-1.5	30	979	990	-1.1
Oklahoma	-	1,536	1,530	0.4	-	1,621	1,622	0.0
Tennessee	7	2,798	2,791	0.3	5	2,819	2,757	2.2
Texas	90	11,446	11,376	0.6	89	12,356	12,323	0.3
Subtotal		<b>22,607</b>	<b>22,605</b>	<b>0.0</b>		<b>23,850</b>	<b>23,740</b>	<b>0.5</b>
<b>West</b>								
Alaska	37	175	181	-3.3	37	150	154	-2.6
Arizona	23	3,108	3,127	-0.6	23	3,077	3,076	0.0
California	35	20,122	20,340	-1.1	39	18,769	18,805	-0.2
Colorado	21	2,366	2,405	-1.6	23	2,455	2,483	-1.1
Hawaii	31	384	387	-0.8	31	379	382	-0.8
Idaho	67	417	410	1.8	73	417	415	0.7
Montana	5	134	130	3.4	5	130	124	4.5
Nevada	30	1,052	1,078	-2.4	30	1,117	1,126	-0.8
New Mexico	34	741	744	-0.4	34	715	733	-2.4
Oregon	30	1,153	1,156	-0.3	39	1,173	1,193	-1.6
Utah	43	1,135	1,132	0.3	42	1,187	1,179	0.6
Washington	41	2,624	2,648	-0.9	37	2,533	2,566	-1.3
Wyoming	-	137	138	-0.7	-	121	121	-0.1
Subtotal		<b>33,548</b>	<b>33,876</b>	<b>-1.0</b>		<b>32,223</b>	<b>32,357</b>	<b>-0.4</b>
<b>TOTALS</b>	<b>1,978</b>	<b>128,219</b>	<b>128,643</b>	<b>-0.3</b>	<b>2,027</b>	<b>131,167</b>	<b>130,389</b>	<b>0.6</b>

Note: Where Number of Stations are shown as dashes, the values for the Vehicle-Miles and Percent Change are derived from the estimated VMT based on data from surrounding States or the nationwide average VMT.

Table - 5. Changes on ALL\* Estimated Roads by Region and State\*\*

Region and State	April				March			
	Number of Stations	Vehicle-Miles (Millions)		Percent Change	Number of Stations	Vehicle-Miles (Millions)		Percent Change
		2012 (Preliminary)	2011			2012 (Revised)	2011	
<b>Northeast</b>								
Connecticut	32	2,452	2,431	0.8	31	2,480	2,465	0.6
Maine	114	1,142	1,116	2.3	114	1,217	1,216	0.1
Massachusetts	65	3,988	3,952	0.9	62	4,541	4,541	0.0
New Hampshire	59	1,067	1,057	0.9	60	1,072	1,082	-1.0
New Jersey	97	6,109	6,112	0.0	100	6,345	6,287	0.9
New York	169	10,673	10,615	0.5	164	11,411	11,253	1.4
Pennsylvania	71	8,176	8,158	0.2	72	8,219	8,051	2.1
Rhode Island	39	635	635	-0.1	44	631	630	0.3
Vermont	60	504	510	-1.1	69	549	551	-0.3
Subtotal		<b>34,746</b>	<b>34,586</b>	<b>0.5</b>		<b>36,465</b>	<b>36,076</b>	<b>1.1</b>
<b>South Atlantic</b>								
Delaware	67	741	721	2.7	66	707	685	3.2
District of Columbia	-	314	319	-1.7	-	346	346	0.1
Florida	247	16,221	16,606	-2.3	251	17,665	17,497	1.0
Georgia	207	9,595	9,860	-2.7	214	9,671	9,722	-0.5
Maryland	68	4,619	4,657	-0.8	66	4,765	4,737	0.6
North Carolina	59	8,410	8,552	-1.7	59	8,982	8,819	1.9
South Carolina	117	4,157	4,231	-1.7	119	4,287	4,250	0.9
Virginia	631	6,758	6,879	-1.8	626	6,898	6,844	0.8
West Virginia	-	1,667	1,667	0.0	-	2,025	1,989	1.8
Subtotal		<b>52,482</b>	<b>53,492</b>	<b>-1.9</b>		<b>55,346</b>	<b>54,889</b>	<b>0.8</b>
<b>North Central</b>								
Illinois	11	9,104	8,976	1.4	19	8,673	8,656	0.2
Indiana	70	6,631	6,547	1.3	66	6,214	6,166	0.8
Iowa	142	2,614	2,600	0.5	150	2,581	2,485	3.9
Kansas	91	2,428	2,446	-0.7	95	2,359	2,322	1.6
Michigan	117	7,916	7,839	1.0	117	8,171	8,010	2.0
Minnesota	73	4,664	4,657	0.1	75	4,725	4,544	4.0
Missouri	147	5,637	5,711	-1.3	145	5,589	5,502	1.6
Nebraska	58	1,634	1,603	2.0	60	1,644	1,562	5.2
North Dakota	40	770	701	9.8	37	717	656	9.3
Ohio	145	9,057	8,984	0.8	146	9,407	9,263	1.6
South Dakota	48	703	696	0.9	47	732	697	5.0
Wisconsin	118	4,932	4,778	3.2	142	5,023	4,852	3.5
Subtotal		<b>56,090</b>	<b>55,538</b>	<b>1.0</b>		<b>55,835</b>	<b>54,715</b>	<b>2.0</b>
<b>South Gulf</b>								
Alabama	45	5,576	5,595	-0.3	39	5,631	5,536	1.7
Arkansas	-	2,495	2,517	-0.9	44	2,830	2,828	0.1
Kentucky	48	4,291	4,212	1.9	51	4,116	4,004	2.8
Louisiana	10	3,611	3,800	-5.0	11	3,730	3,845	-3.0
Mississippi	77	3,393	3,474	-2.3	79	3,417	3,436	-0.5
Oklahoma	-	4,015	3,978	0.9	-	4,076	4,039	0.9
Tennessee	18	5,819	5,868	-0.8	13	6,186	6,093	1.5
Texas	235	19,749	19,643	0.5	240	21,088	20,926	0.8
Subtotal		<b>48,949</b>	<b>49,087</b>	<b>-0.3</b>		<b>51,074</b>	<b>50,707</b>	<b>0.7</b>
<b>West</b>								
Alaska	75	405	416	-2.5	76	366	375	-2.4
Arizona	94	5,342	5,385	-0.8	99	5,197	5,223	-0.5
California	77	28,039	28,379	-1.2	58	25,917	25,929	0.0
Colorado	94	4,049	4,091	-1.0	98	4,299	4,297	0.0
Hawaii	38	804	809	-0.5	38	792	797	-0.7
Idaho	170	1,273	1,250	1.8	186	1,251	1,238	1.1
Montana	69	822	800	2.7	68	790	762	3.6
Nevada	75	1,738	1,771	-1.9	77	1,819	1,829	-0.5
New Mexico	102	2,085	2,114	-1.4	101	2,070	2,121	-2.4
Oregon	142	2,627	2,637	-0.4	153	2,638	2,695	-2.1
Utah	89	2,289	2,290	0.0	91	2,341	2,318	1.0
Washington	91	4,744	4,805	-1.3	84	4,356	4,435	-1.8
Wyoming	-	763	757	0.7	-	713	697	2.3
Subtotal		<b>54,980</b>	<b>55,504</b>	<b>-0.9</b>		<b>52,549</b>	<b>52,716</b>	<b>-0.3</b>
<b>TOTALS</b>	<b>4,711</b>	<b>247,244</b>	<b>248,207</b>	<b>-0.4</b>	<b>4,822</b>	<b>251,267</b>	<b>249,102</b>	<b>0.9</b>

Note: Where Number of Stations are shown as dashes, the values for the Vehicle-Miles and Percent Change are derived from the estimated VMT based on data from surrounding States or the nationwide average VMT. \* All Estimated roads include travel from Table 3 and 4 plus remaining roads

Table - 6. Estimated Rural Vehicle Miles (Millions) and Percent Change from Same Period Previous Year\*\*

Year - 2011														
	Rural Interstate %		Rural Other Arterial %		Other Rural %		Total Rural %		All Systems %					
Jan	17,486	0.3	Jan	26,722	1.3	Jan	26,144	0.4	Jan	70,352	0.7	Jan	221,313	0.5
Feb	16,501	0.9	Feb	25,948	1.1	Feb	24,884	0.5	Feb	67,333	0.8	Feb	212,221	0.6
Mar	19,833	-0.5	Mar	30,537	-1.9	Mar	29,986	-1.7	Mar	80,357	-1.5	Mar	249,102	-1.1
Q1	53,820	0.2	Q1	83,207	0.1	Q1	81,014	-0.4	Q1	218,041	-0.1	Q1	682,637	0.0
Apr	20,430	-2.2	Apr	30,475	-3.2	Apr	30,072	-3.5	Apr	80,976	-3.1	Apr	248,207	-2.3
May	21,077	-2.6	May	31,999	-2.5	May	31,196	-2.9	May	84,272	-2.6	May	252,738	-1.8
Jun	21,287	-2.2	Jun	33,031	-1.7	Jun	32,034	-2.1	Jun	86,352	-2.0	Jun	256,542	-1.4
Q2	62,794	-2.3	Q2	95,505	-2.4	Q2	93,301	-2.8	Q2	251,600	-2.6	Q2	757,487	-1.8
1st Half	116,614	-1.2	1st Half	178,712	-1.3	1st Half	174,315	-1.7	1st Half	469,641	-1.4	1st Half	1,440,123	-1.0
Jul	23,230	-2.3	Jul	35,068	-2.6	Jul	32,804	-2.9	Jul	91,102	-2.6	Jul	259,051	-2.5
Aug	22,272	-3.0	Aug	34,138	-2.2	Aug	32,141	-2.4	Aug	88,551	-2.4	Aug	259,359	-1.9
Sep	19,969	-1.3	Sep	31,525	-1.7	Sep	29,627	-2.5	Sep	81,121	-1.9	Sep	240,654	-1.6
Q3	65,470	-2.2	Q3	100,730	-2.2	Q3	94,572	-2.6	Q3	260,773	-2.3	Q3	759,063	-2.0
Oct	20,623	-2.8	Oct	32,362	-2.3	Oct	30,862	-3.0	Oct	83,846	-2.7	Oct	250,653	-2.4
Nov	19,582	-1.1	Nov	29,808	-1.0	Nov	27,839	-1.7	Nov	77,228	-1.3	Nov	237,202	-1.0
Dec	19,819	0.9	Dec	29,606	1.5	Dec	27,814	1.1	Dec	77,239	1.2	Dec	243,612	1.1
Q4	60,023	-1.0	Q4	91,776	-0.7	Q4	86,514	-1.3	Q4	238,313	-1.0	Q4	731,468	-0.8
2nd Half	125,494	-1.7	2nd Half	192,506	-1.5	2nd Half	181,087	-2.0	2nd Half	499,086	-1.7	2nd Half	1,490,531	-1.4
<b>Year</b>	<b>242,107</b>	<b>-1.4</b>	<b>Year</b>	<b>371,218</b>	<b>-1.4</b>	<b>Year</b>	<b>355,402</b>	<b>-1.8</b>	<b>Year</b>	<b>968,727</b>	<b>-1.6</b>	<b>Year</b>	<b>2,930,654</b>	<b>-1.2</b>

Year - 2012														
	Rural Interstate %		Rural Other Arterial %		Other Rural %		Total Rural %		All Systems %					
Jan	17,643	0.9	Jan	27,158	1.6	Jan	26,506	1.4	Jan	71,308	1.4	Jan	224,845	1.6
Feb	16,836	2.0	Feb	26,415	1.8	Feb	25,295	1.7	Feb	68,546	1.8	Feb	216,043	1.8
Mar	20,044	1.1	Mar	31,165	2.1	Mar	30,436	1.5	Mar	81,645	1.6	Mar	251,267	0.9
Q1	54,523	1.3	Q1	84,739	1.8	Q1	82,237	1.5	Q1	221,499	1.6	Q1	692,155	1.4
Apr	20,375	-0.3	Apr	30,540	0.2	Apr	29,970	-0.3	Apr	80,885	-0.1	Apr	247,244	-0.4
May			May			May			May			May		
Jun			Jun			Jun			Jun			Jun		
Q2	20,375	-0.3	Q2	30,540	0.2	Q2	29,970	-0.3	Q2	80,885	-0.1	Q2	247,244	-0.4
1st Half	74,898	0.9	1st Half	115,278	1.4	1st Half	112,207	1.0	1st Half	302,384	1.1	1st Half	939,398	0.9
Jul			Jul			Jul			Jul			Jul		
Aug			Aug			Aug			Aug			Aug		
Sep			Sep			Sep			Sep			Sep		
Q3		0.0	Q3		0.0	Q3		0.0	Q3		0.0	Q3		0.0
Oct			Oct			Oct			Oct			Oct		
Nov			Nov			Nov			Nov			Nov		
Dec			Dec			Dec			Dec			Dec		
Q4		0.0	Q4		0.0	Q4		0.0	Q4		0.0	Q4		0.0
2nd Half		0.0	2nd Half		0.0	2nd Half		0.0	2nd Half		0.0	2nd Half		0.0
<b>Year</b>	<b>74,898</b>	<b>0.9</b>	<b>Year</b>	<b>115,278</b>	<b>1.4</b>	<b>Year</b>	<b>112,207</b>	<b>1.0</b>	<b>Year</b>	<b>302,384</b>	<b>1.1</b>	<b>Year</b>	<b>939,398</b>	<b>0.9</b>

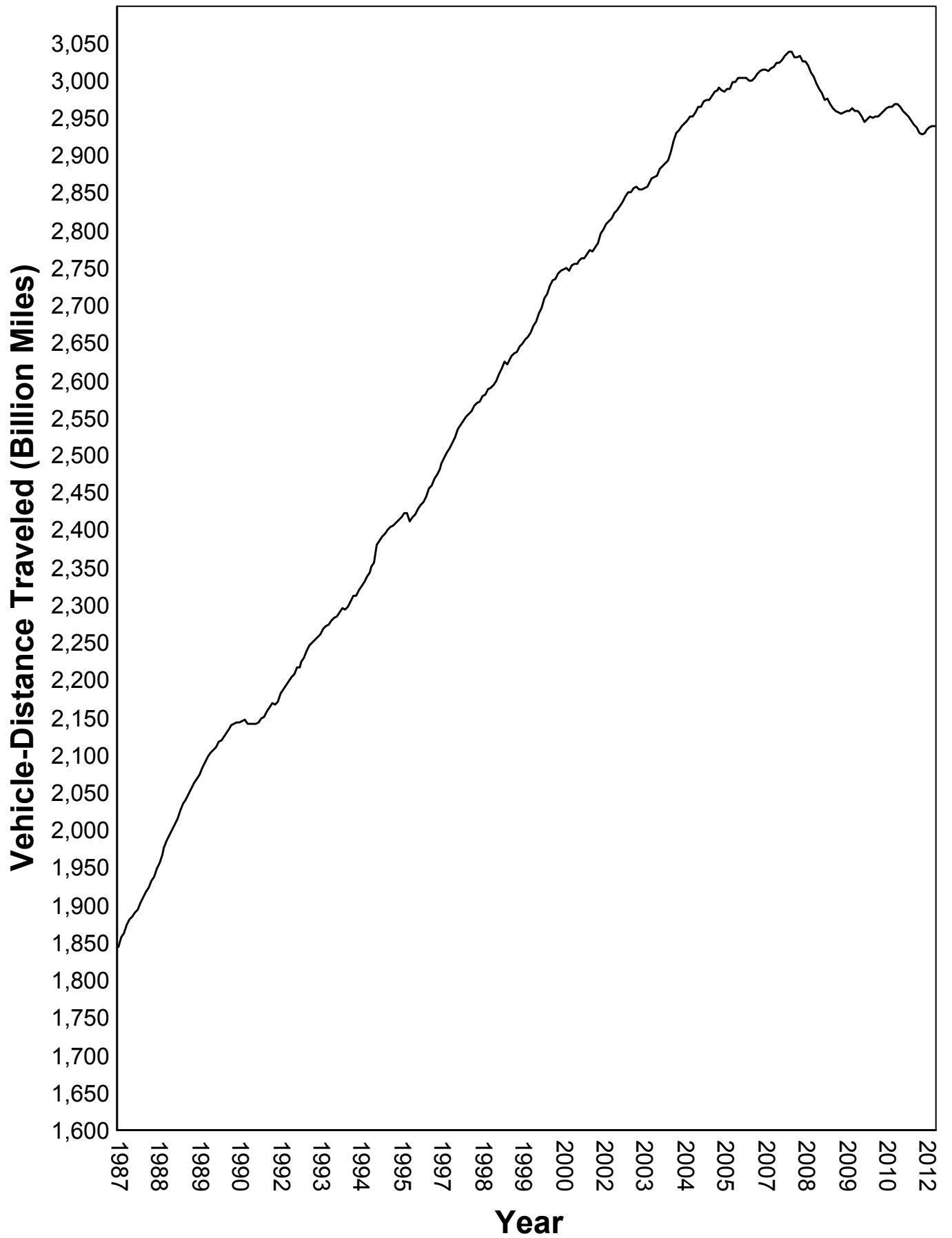
Table - 7. Estimated Urban Vehicle Miles (Millions) and Percent Change from Same Period Previous Year\*\*

Year - 2011														
Urban Interstate %			Urban Other Arterial %			Other Urban %			Total Urban %		All Systems %			
Jan	36,018	0.5	Jan	80,506	0.5	Jan	34,438	0.4	Jan	150,962	0.5	Jan	221,313	0.5
Feb	34,480	0.7	Feb	77,215	0.1	Feb	33,193	1.3	Feb	144,888	0.5	Feb	212,221	0.6
Mar	40,497	0.1	Mar	89,893	-1.3	Mar	38,355	-0.9	Mar	168,746	-0.9	Mar	249,102	-1.1
Q1	110,995	0.4	Q1	247,615	-0.3	Q1	105,985	0.2	Q1	464,595	0.0	Q1	682,637	0.0
Apr	40,053	-1.0	Apr	88,589	-2.0	Apr	38,589	-2.4	Apr	167,231	-1.9	Apr	248,207	-2.3
May	41,242	-0.6	May	88,554	-1.7	May	38,671	-1.4	May	168,466	-1.4	May	252,738	-1.8
Jun	42,277	-0.1	Jun	89,427	-1.2	Jun	38,486	-1.9	Jun	170,190	-1.1	Jun	256,542	-1.4
Q2	123,571	-0.6	Q2	266,570	-1.6	Q2	115,745	-1.9	Q2	505,887	-1.4	Q2	757,487	-1.8
1st Half	234,566	-0.1	1st Half	514,185	-1.0	1st Half	221,731	-0.9	1st Half	970,482	-0.8	1st Half	1,440,123	-1.0
Jul	40,186	-2.2	Jul	89,212	-2.5	Jul	38,551	-2.8	Jul	167,949	-2.5	Jul	259,051	-2.5
Aug	41,311	-1.6	Aug	91,055	-1.6	Aug	38,441	-1.4	Aug	170,808	-1.6	Aug	259,359	-1.9
Sep	39,371	-1.1	Sep	84,304	-1.5	Sep	35,857	-2.0	Sep	159,533	-1.5	Sep	240,654	-1.6
Q3	120,868	-1.6	Q3	264,572	-1.9	Q3	112,850	-2.1	Q3	498,290	-1.9	Q3	759,063	-2.0
Oct	40,316	-1.7	Oct	89,385	-2.1	Oct	37,106	-3.3	Oct	166,807	-2.3	Oct	250,653	-2.4
Nov	39,354	-0.7	Nov	84,574	-0.7	Nov	36,046	-1.5	Nov	159,974	-0.9	Nov	237,202	-1.0
Dec	40,061	1.6	Dec	87,754	0.9	Dec	38,559	1.1	Dec	166,374	1.1	Dec	243,612	1.1
Q4	119,731	-0.3	Q4	261,712	-0.7	Q4	111,711	-1.2	Q4	493,155	-0.7	Q4	731,468	-0.8
2nd Half	240,600	-0.9	2nd Half	526,284	-1.3	2nd Half	224,561	-1.7	2nd Half	991,445	-1.3	2nd Half	1,490,531	-1.4
<b>Year</b>	<b>475,166</b>	<b>-0.5</b>	<b>Year</b>	<b>1,040,469</b>	<b>-1.1</b>	<b>Year</b>	<b>446,291</b>	<b>-1.3</b>	<b>Year</b>	<b>1,961,927</b>	<b>-1.0</b>	<b>Year</b>	<b>2,930,654</b>	<b>-1.2</b>

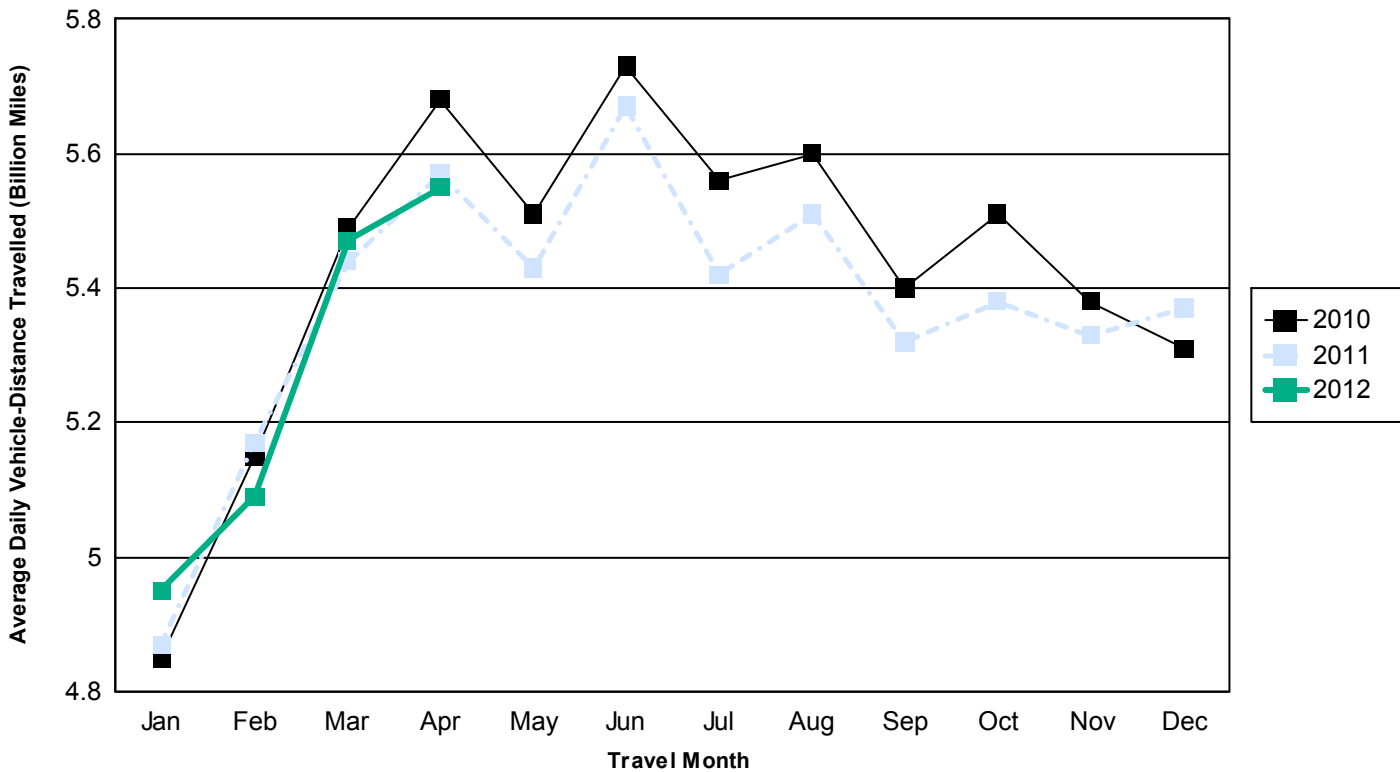
Year - 2012														
Urban Interstate %			Urban Other Arterial %			Other Urban %			Total Urban %		All Systems %			
Jan	36,801	2.2	Jan	81,685	1.5	Jan	35,051	1.8	Jan	153,537	1.7	Jan	224,845	1.6
Feb	35,483	2.9	Feb	78,371	1.5	Feb	33,642	1.4	Feb	147,497	1.8	Feb	216,043	1.8
Mar	40,787	0.7	Mar	90,381	0.5	Mar	38,454	0.3	Mar	169,622	0.5	Mar	251,267	0.9
Q1	113,071	1.9	Q1	250,437	1.1	Q1	106,232	0.2	Q1	470,656	1.3	Q1	692,155	1.4
Apr	40,129	0.2	Apr	88,088	-0.6	Apr	38,142	-1.2	Apr	166,359	-0.5	Apr	247,244	-0.4
May			May			May			May			May		
Jun			Jun			Jun			Jun			Jun		
Q2	40,129	0.2	Q2	88,088	-0.6	Q2	37,820	-2.0	Q2	166,359	-0.5	Q2	247,244	-0.4
1st Half	153,199	1.4	1st Half	338,525	0.7	1st Half	145,290	0.5	1st Half	637,015	0.8	1st Half	939,398	0.9
Jul			Jul			Jul			Jul			Jul		
Aug			Aug			Aug			Aug			Aug		
Sep			Sep			Sep			Sep			Sep		
Q3		0.0	Q3		0.0	Q3		0.0	Q3		0.0	Q3		0.0
Oct			Oct			Oct			Oct			Oct		
Nov			Nov			Nov			Nov			Nov		
Dec			Dec			Dec			Dec			Dec		
Q4		0.0	Q4		0.0	Q4		0.0	Q4		0.0	Q4		0.0
2nd Half		0.0	2nd Half		0.0	2nd Half		0.0	2nd Half		0.0	2nd Half		0.0
<b>Year</b>	<b>153,199</b>	<b>1.4</b>	<b>Year</b>	<b>338,525</b>	<b>0.7</b>	<b>Year</b>	<b>145,290</b>	<b>0.5</b>	<b>Year</b>	<b>637,015</b>	<b>0.8</b>	<b>Year</b>	<b>939,398</b>	<b>0.9</b>



**Figure - 1. Moving 12-Month Total on ALL Roads**



Urban Highways



Rural Highways

