

# CAPITAL DISTRICT TRANSPORTATION COMMITTEE (CDTC): FREIGHT PLANNING



Photo Source: Times-Union

DECEMBER 20, 2017



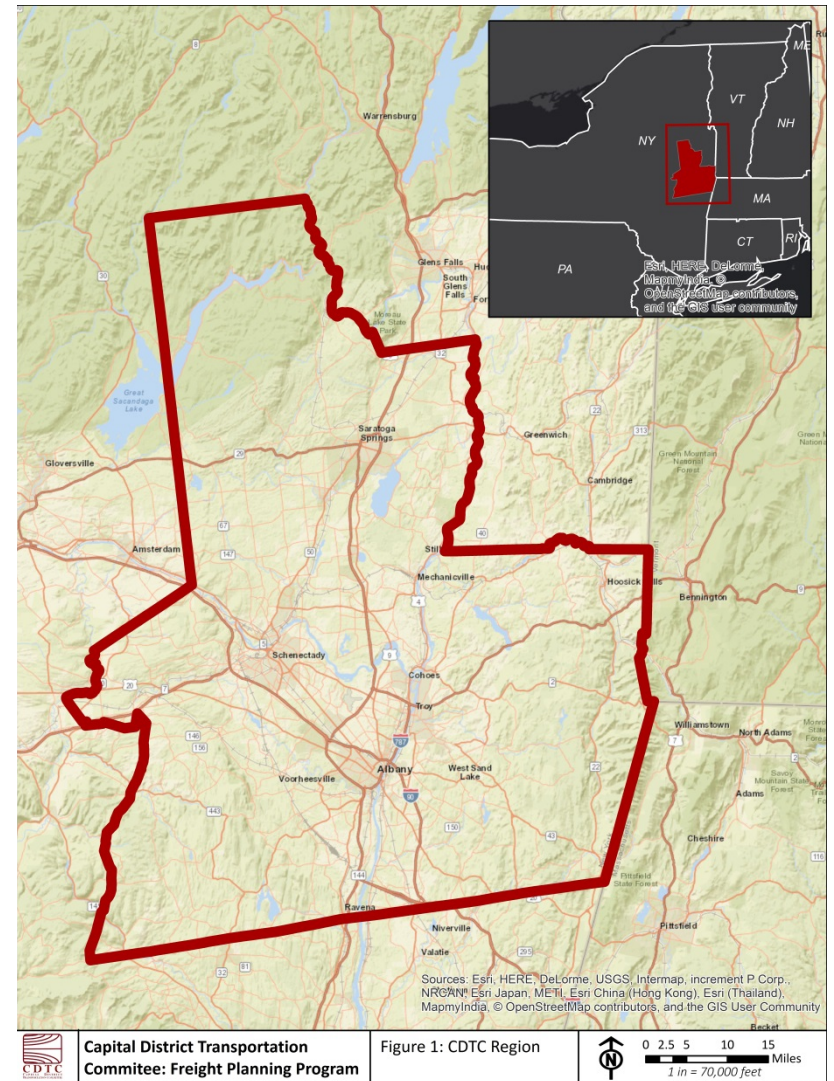
Capital District  
Transportation  
Committee

Chris Bauer

FHWA Talking Freight: Good Practices in MPO Freight Planning

# CDTC Background

- Metropolitan Planning Organization (MPO) for Albany-Schenectady-Troy and Saratoga Springs Urbanized Areas
- 4 Counties
- +/- 910,000 Population (Est. 2016)
- CDTC Staff = 13



# New Visions 2040

- CDTC's Long Range Transportation Plan

- 12 Core Principles;

- ▣ Freight:

- “Our freight system is crucial to the **economy**; it will be **efficient and automated...**”

- “comprehensive enough to encompass **all modes...**”

- “embrace freight's **key contributions to regional prosperity**, while also trying to **mitigate the negative impacts** of all modes of freight movement on local communities.”

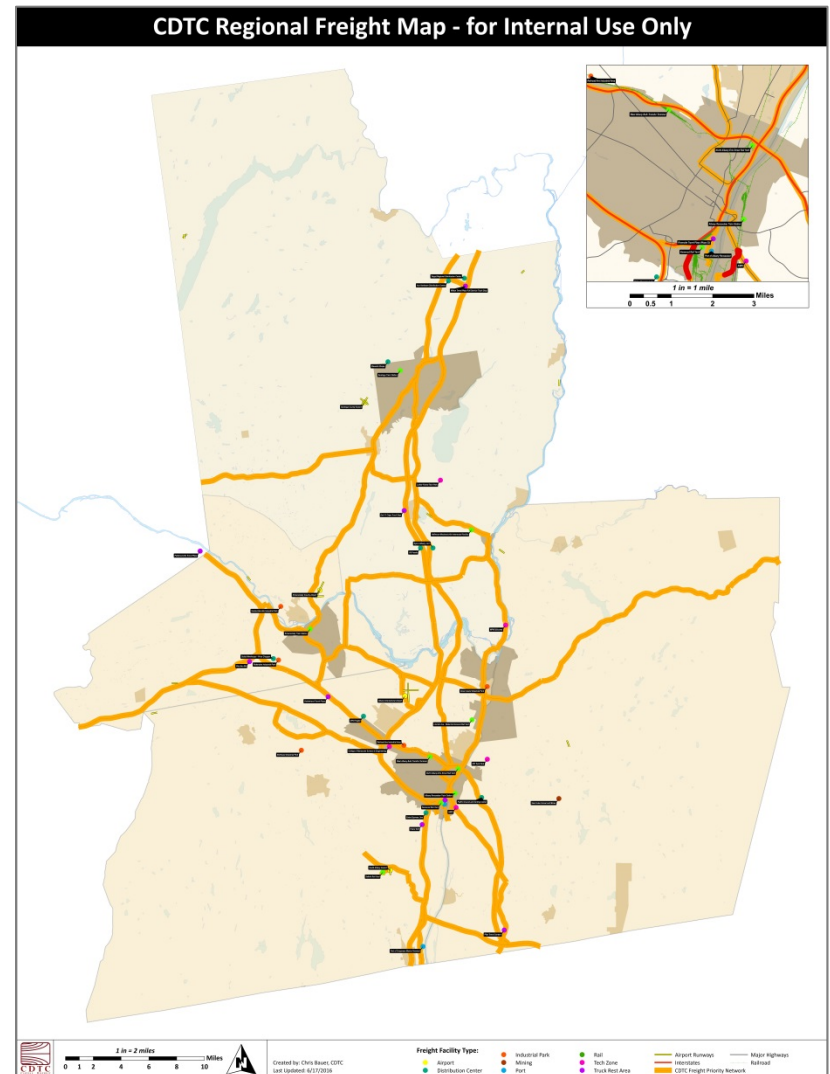
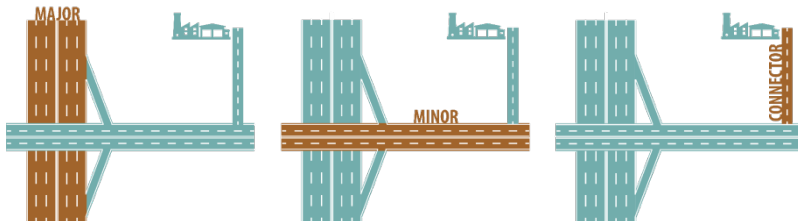
# Freight Advisory Committee

- Meets Quarterly
  - ▣ February, May, August, November
- Includes public and private sector representatives of the freight and logistics industry, for example:
  - ▣ Railroads
  - ▣ Manufacturers
  - ▣ Carriers, shippers, and receivers
  - ▣ Industrial land developers
  - ▣ Ports and airports
  - ▣ NYSDOT, Thruway Authority, local government agencies



# Freight Priority Network

- Facilitate efficient and safe truck movement to, from, and within CDTC region
- Ensures planning and investment across region accounts for freight demand



# Transportation Improvement Program

- Freight is integrated in CDTC's project evaluation
- CDTC's Evaluation Approach:
  - Benefit/Cost Ratio and Merit Scoring
    - Categories correspond directly with New Visions Planning Principles

FREIGHT (5 POINTS POSSIBLE)		
<b>Freight and Goods Movement (5 points)</b>		
<b>Award 1 point for each of these criteria (for a cumulative total of up to 5 maximum):</b> <ul style="list-style-type: none"> <li>• Project improves a MPO or NYSDOT identified freight movement issue</li> <li>• Project removes/substantially improves a freight related land-use compatibility, noise, or safety issue</li> <li>• Project is located on, or provides access to, the CDTC Freight Priority Network, and provides a travel time and/or reliability benefit(s)</li> <li>• Project enhances access to a key freight generator (Ex: Airport, Ports, Major Distribution Centers, Industrial Park/cluster of industrial land uses)</li> <li>• Project enhances access to any intermodal freight movement (Ex: air to truck/rail, rail to truck/water, water to rail/truck/air, etc.)</li> </ul>		1 to 5
Project has neutral affect (no known impact, positive or negative) on freight and goods movement.		0
Project is located on, or provides access to, the CDTC Freight Priority Network, and increases travel time and/or decreases reliability.		-1
Project negatively affects freight movement or safety in an area with a known MPO or NYSDOT identified freight movement or freight-related safety issue; alternatively, project introduces a specifically freight-related land use incompatibility (e.g., substantial increase to freight traffic load in residential area, introduction of significant freight traffic noise or other significant freight related nuisance).		-2
<b>FREIGHT SUBTOTAL SCORE</b>		

# Example Freight Planning Projects

- CDTC Regional Freight Plan (2016)
- Regional Dynamic Freight Database (RPI, SHRP2, 2016)
- Local O/D Studies (2017)
- Local Model Ordinance Development (2018)
- Etc.



# Partnerships with Higher Education

- Rensselaer Polytechnic Institute (RPI)
  - FHWA Strategic Highway Research Program (SHRP2) C20: Local Freight Data Improvement (2016)
  - US Dept. of Energy Living Labs: Energy Efficient Mobility Systems Project (current)
    - Albany to New York City Corridor
- State University of New York (SUNY), University at Albany
  - NPMRDS Dashboard
  - Performance Measure Reporting



UNIVERSITY  
AT ALBANY

State University of New York



# SHRP2 (C20) – Dynamic Freight Database

- FHWA Strategic Highway Research Program (SHRP2) C20: Local Freight Data Improvement (2016)
- Leveraged:
  - Multiple free data sources (ex: Commodity Flow Survey, FAF)
  - Previous RPI efforts, surveys
  - CDTC's freight partners
  - Federal research funding
- Dynamic Freight Database



Table 1: Summary of freight data sources

No.	Database	Geographic scope	Agency	Status
<b>Publicly available data</b>				
1	Commodity Flow Survey (CFS) data	National	USDOT / BTS	Acquired
2	FAF3 Origin-Destination data	National	USDOT / FHWA	Acquired
3	Smart location data	National	EPA	Acquired
4	Employment data (ZIP Code Business Patterns)	National	Census	Acquired
<b>Need to be obtained from different agencies</b>				
1	511 NY data feed	New York State	NYSDOT	Partially Acquired
2	Capital Region updated network data	Capital Region	CDTC	Acquired
3	Commercial Census data	New York State	USDOT	Acquired
4	HERE speed data	New York State	CDTC	Acquired
5	MIST speed and volume data	New York State	CDTC/NYSDOT	Requires time
6	TRANSEARCH commodity flow data	National	CDTC	Acquired for 2004
7	Economic data (in GIS format)	New York State	NYS Clearinghouse	Acquired
8	E-ZPass data	New York State	NYSTA	Acquired
9	Oversize/overweight permitting data	New York State	NYSDOT	Acquired
10	TRANSMIT data	New York State	TRANSCOM	Not provided
11	Truck crash data	New York State	NYSDMV	Acquired
12	Truck traffic counts	New York State	NYSDOT	Acquired
13	Weight-In-Motion (WIM) data	New York State	NYSDOT	Acquired

# NYSAMPO Freight Working Group

- New York State Association of Metropolitan Planning Organizations (NYSAMPO)
- Freight Working Group
- Teleconference meetings quarterly; topics include:
  - ▣ New York State Freight Plan
  - ▣ Freight planning best practices
  - ▣ Performance measure reporting
- In-person tour every other year



# Thank You!

Christian P. Bauer, AICP  
Senior Transportation Planner  
Capital District Transportation Committee  
(518) 458-2161  
[cbauer@cdtcmpo.org](mailto:cbauer@cdtcmpo.org)

