

Killing Two Birds

MoDOT addresses truck parking and high-cost facilities in one solution

Talking Freight, January 18, 2017

Cheryl Ball, JD

MoDOT Freight and Waterways Administrator

Two Problems That Seem Unrelated

Truck Parking Issues

- Drivers parking on shoulders and ramps
- Explosive growth in CMV VMT
- HOS
- Decreasing budgets; expensive right of way

Roadside Assets

- Aging infrastructure
- Septic systems need upgraded

2 for 1 Solution

Truck Parking

- Fewer trucks on ramps and shoulders
- Many more comfort facilities for small vehicle travelers today offset transfer to trucks

Roadside Assets

- Decommission obsolete facilities & convert
- Eliminate environmental issue
- Fiscally responsible
 - Already own ROW
 - Conversion costs recouped quickly

Costs

Initial Conversion

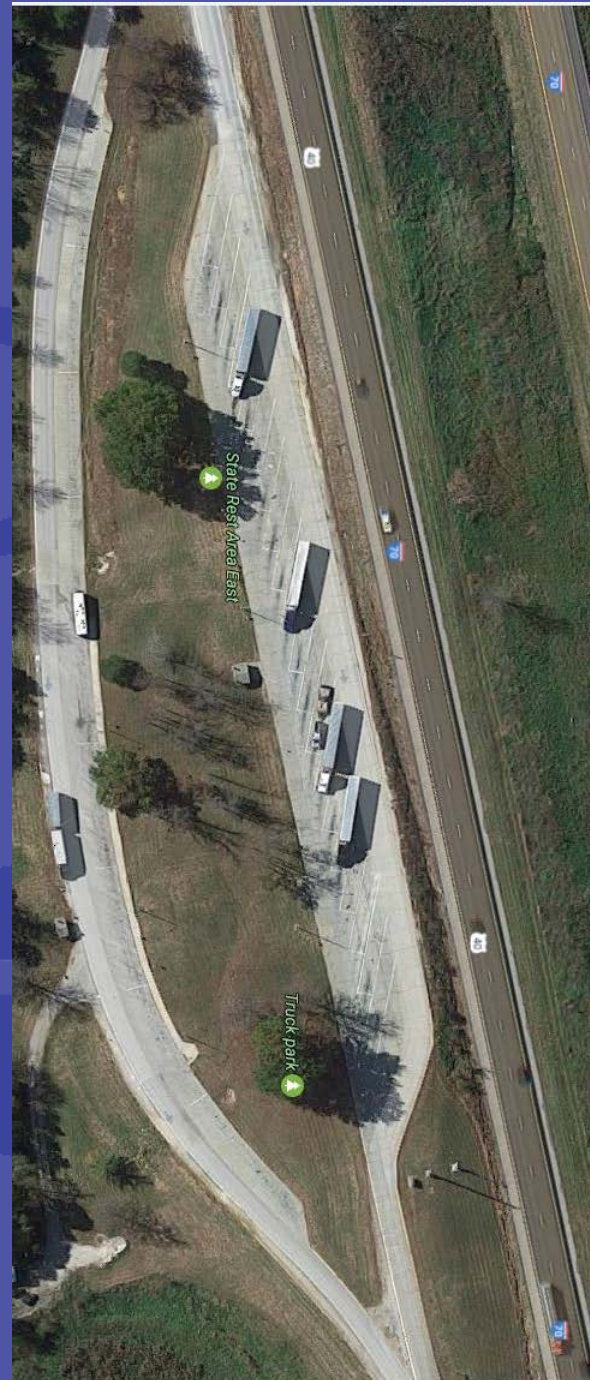
- Demolition
- Remediate Septic System
- Site Preparation

Continuing Costs

- Safety Lighting
- Mowing
- Snow Removal
- Trash Removal/pickup
- Vault cleanout

Savings

- Water
- General Electricity
- Maintenance
- Cleaning Costs

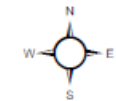


Lessons Learned

- Trash cans create more debris
- Parking unused at weigh stations
- Road maintenance savings data
- Engage trucking industry



Facility Locations



| Facility Type | |
|---------------|--------------------|
| | Rest Area |
| | Truck Parking Only |
| | Welcome Center |
| | Weigh Station |

Missouri Department of Transportation
 Transportation Planning
 1-888-ASK-MODOT
 WWW.MODOT.ORG
 November 2015



Not a Complete Solution

- **Supplements, not replaces, private truck parking**
 - Demand for truck parking still outstrips supply
 - Number of trucks expected to double
 - We're nearly out of conversion opportunities
- **Parking for Staging is Still Needed**
 - Urban Areas
 - Near freight generators
- **Needs Management Buy-in**
 - Must demonstrate shut down versus conversion benefits for each site.