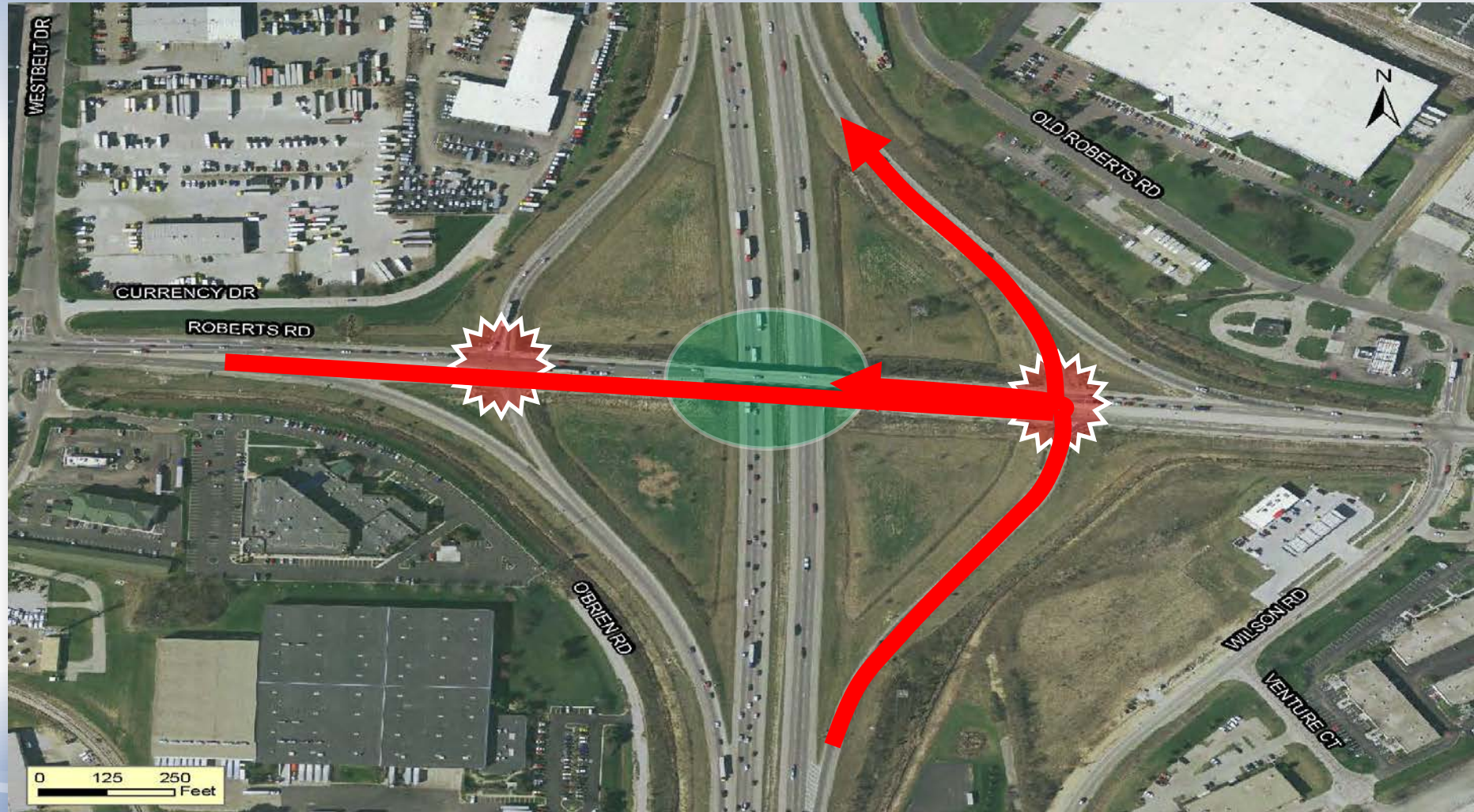




**I-270 and Roberts Road**  
**Diverging Diamond Interchange**  
Columbus, Ohio

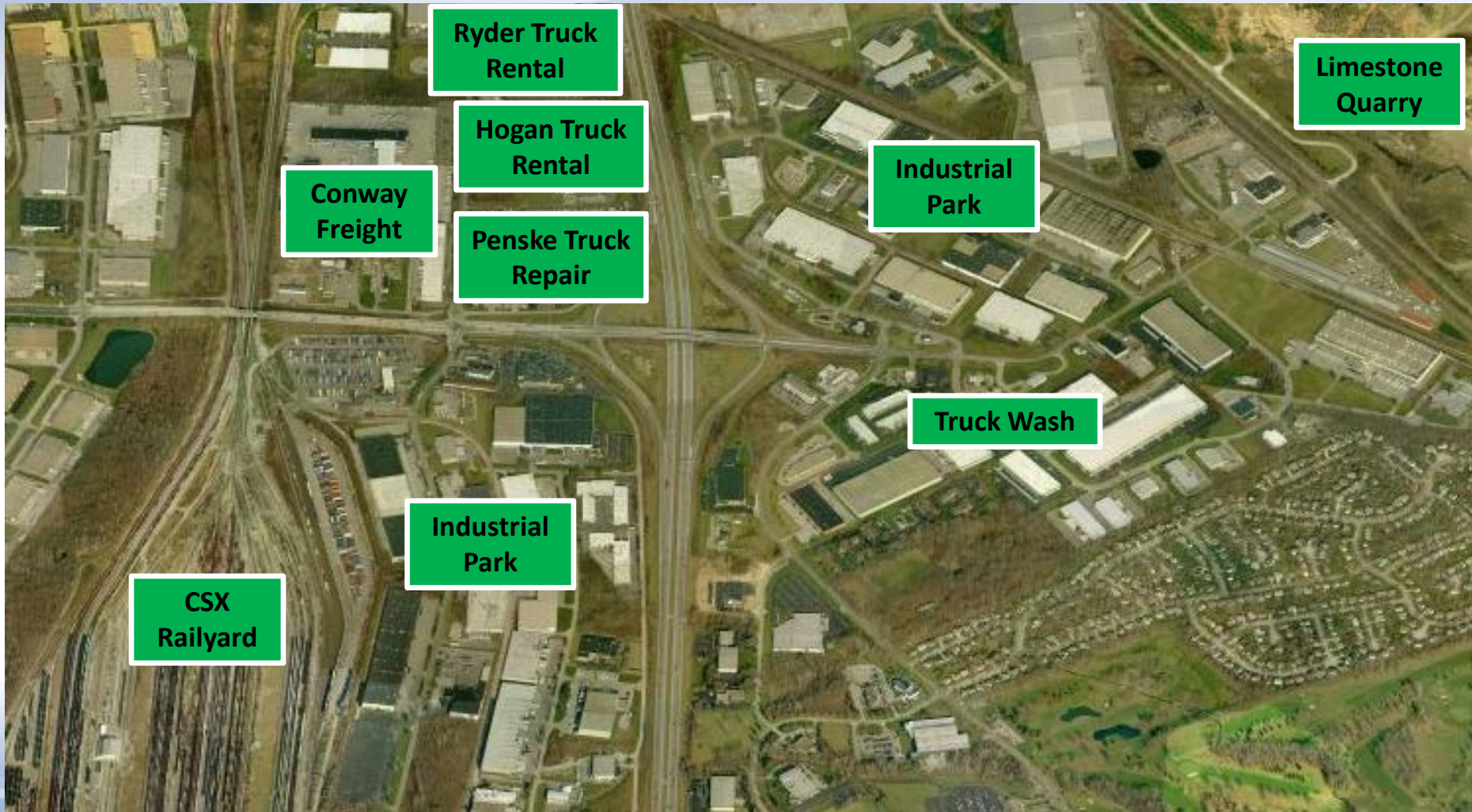


# Project Overview



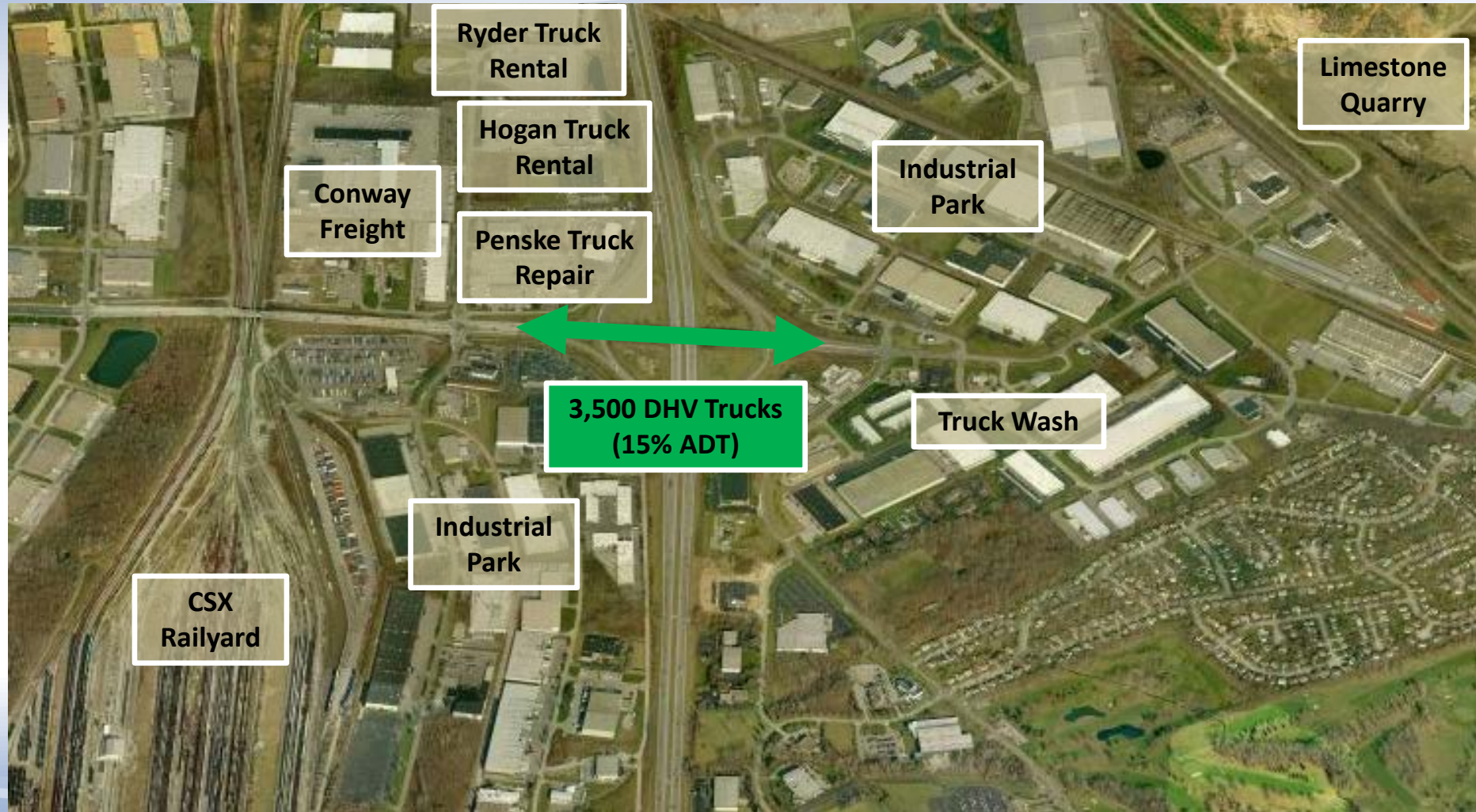


# Project Overview





# Project Overview





# Project Overview



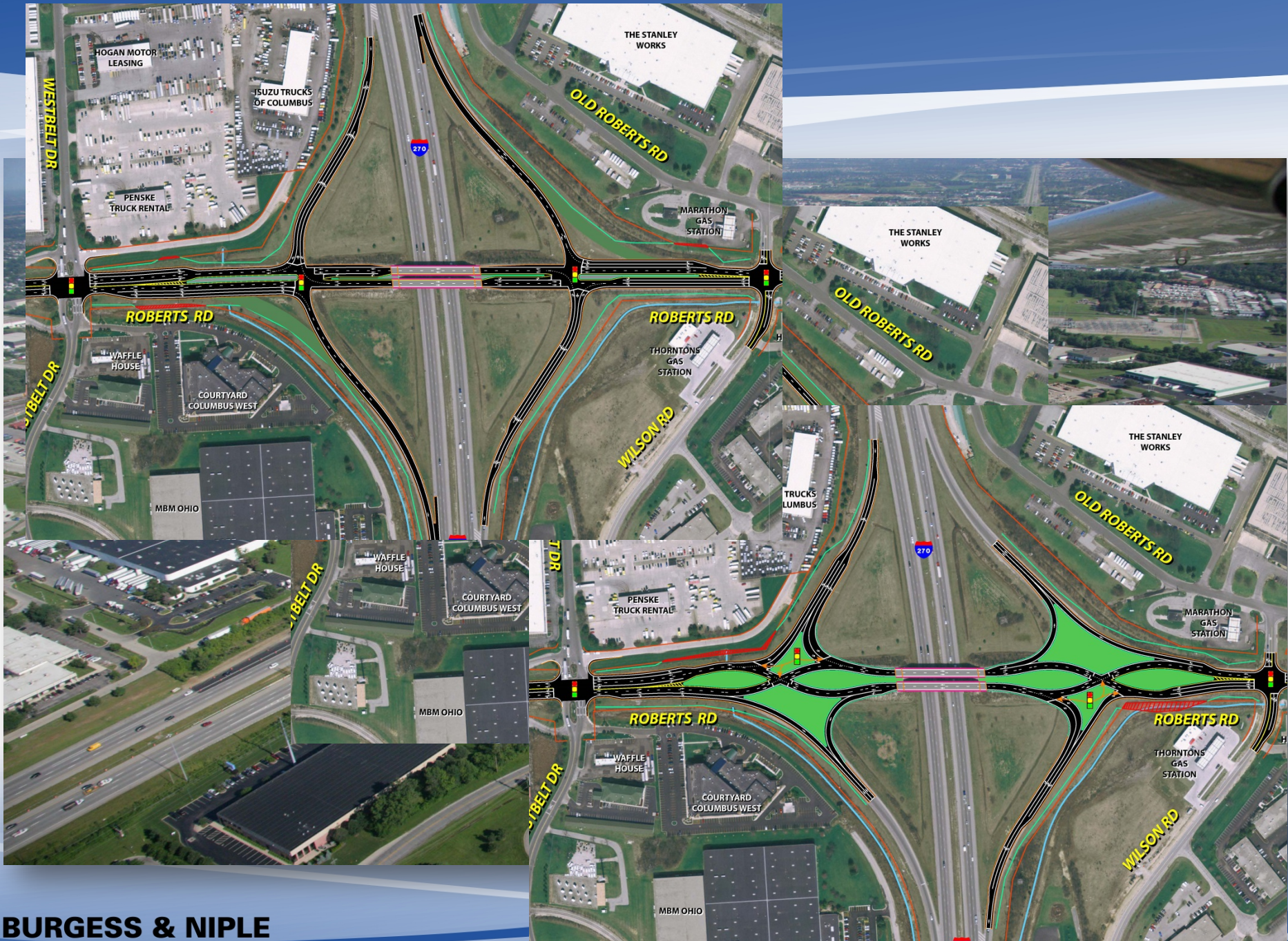
**BURGESS & NIPLÉ**





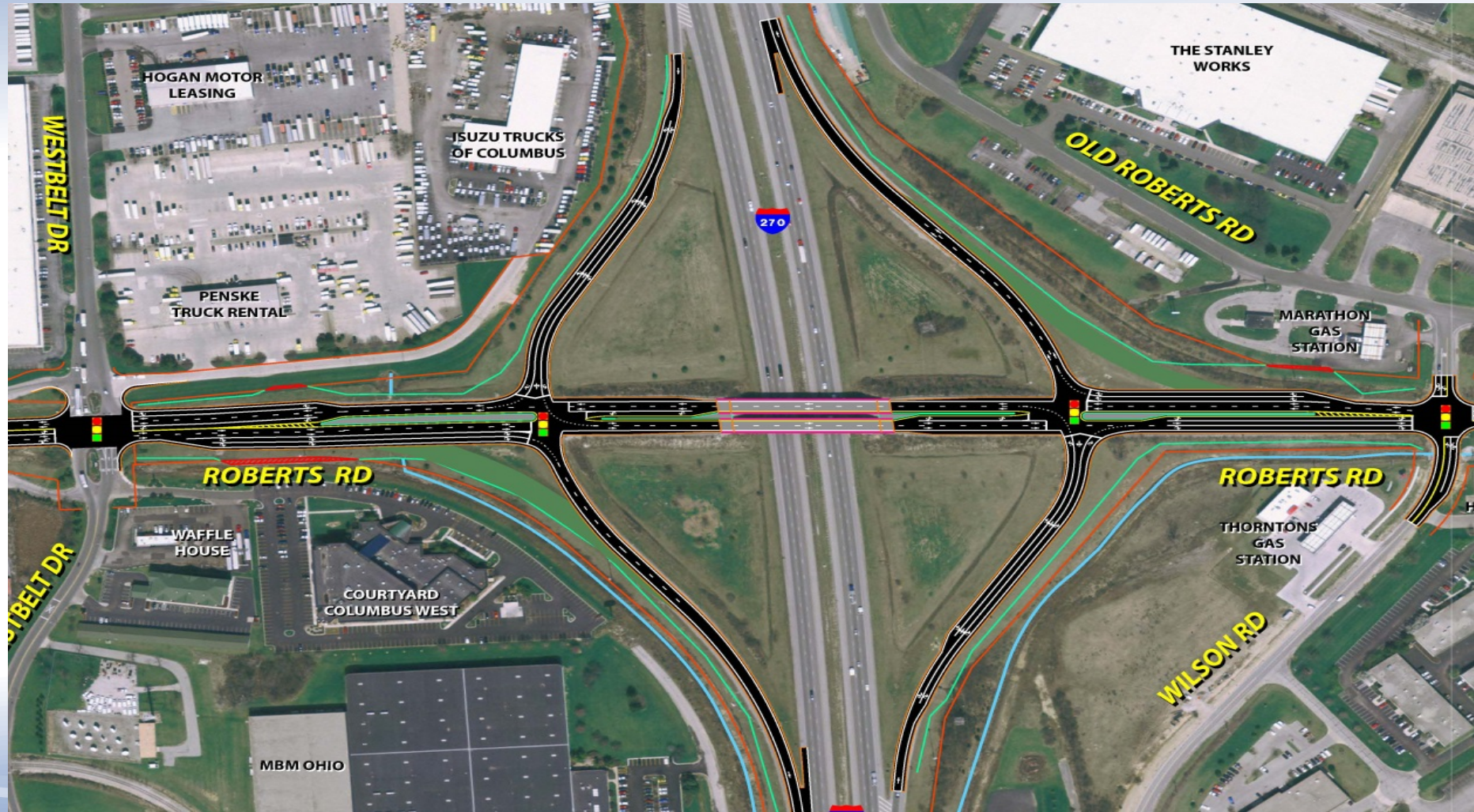
**BURGESS & NIPLÉ**





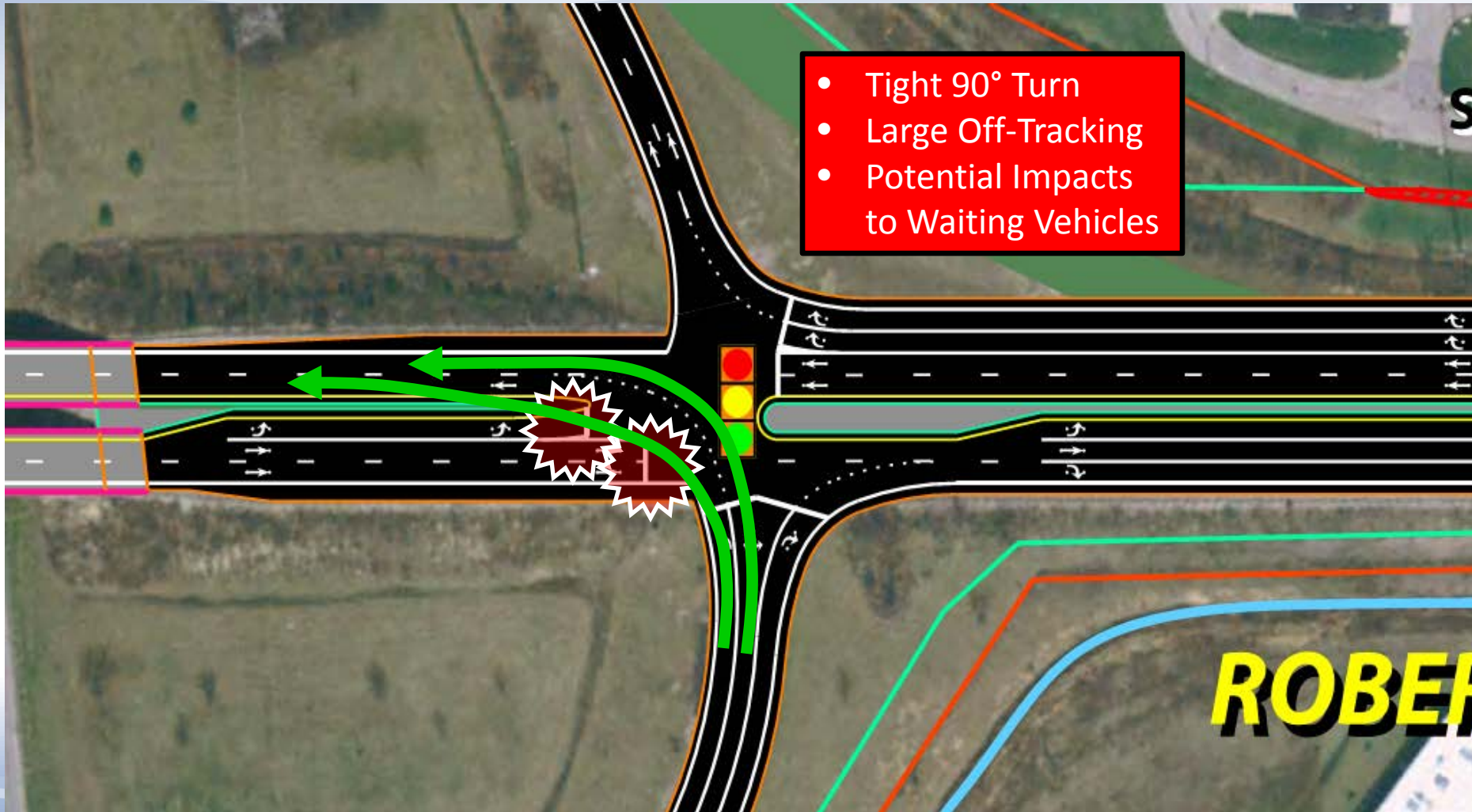


# Alternatives



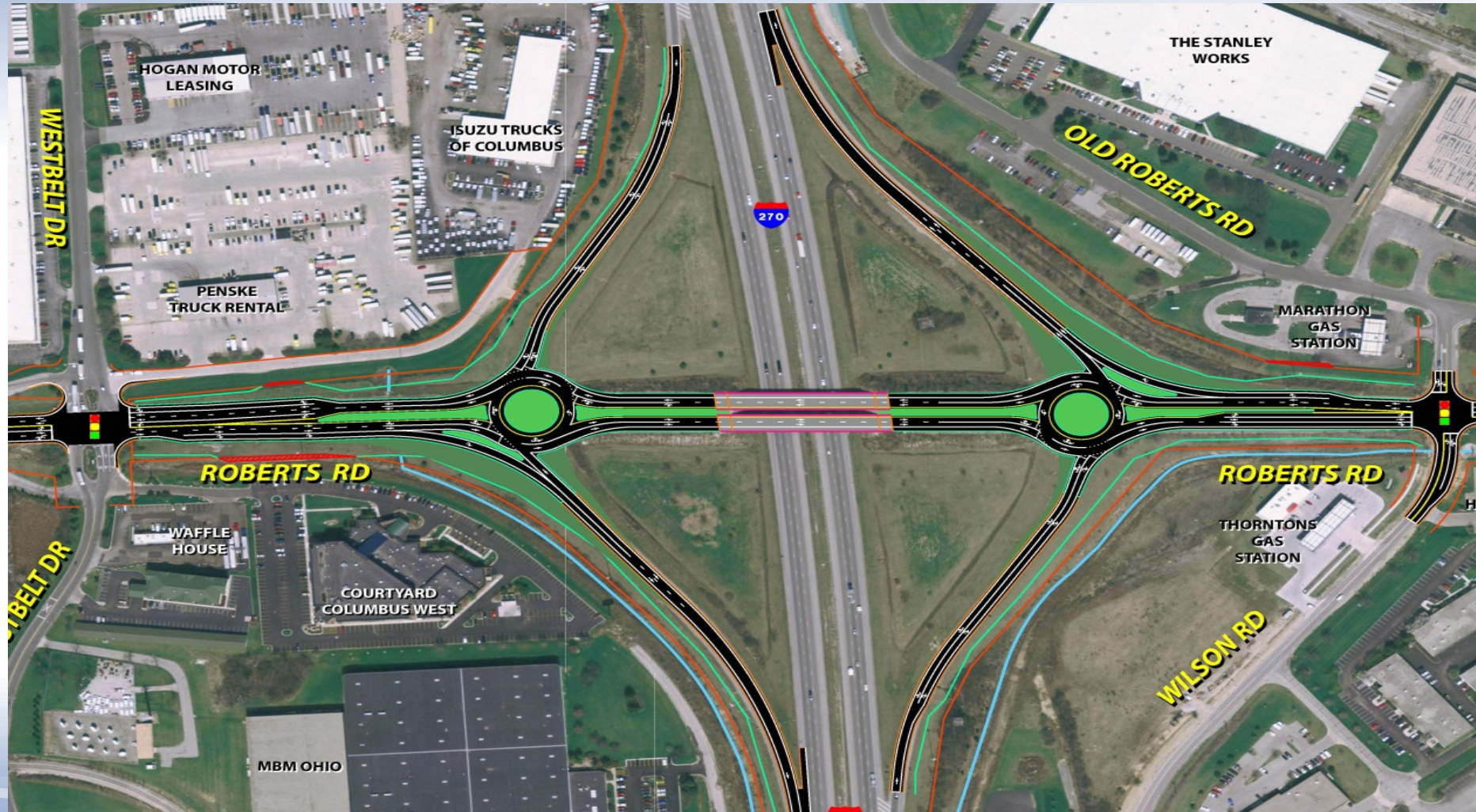


# Alternatives



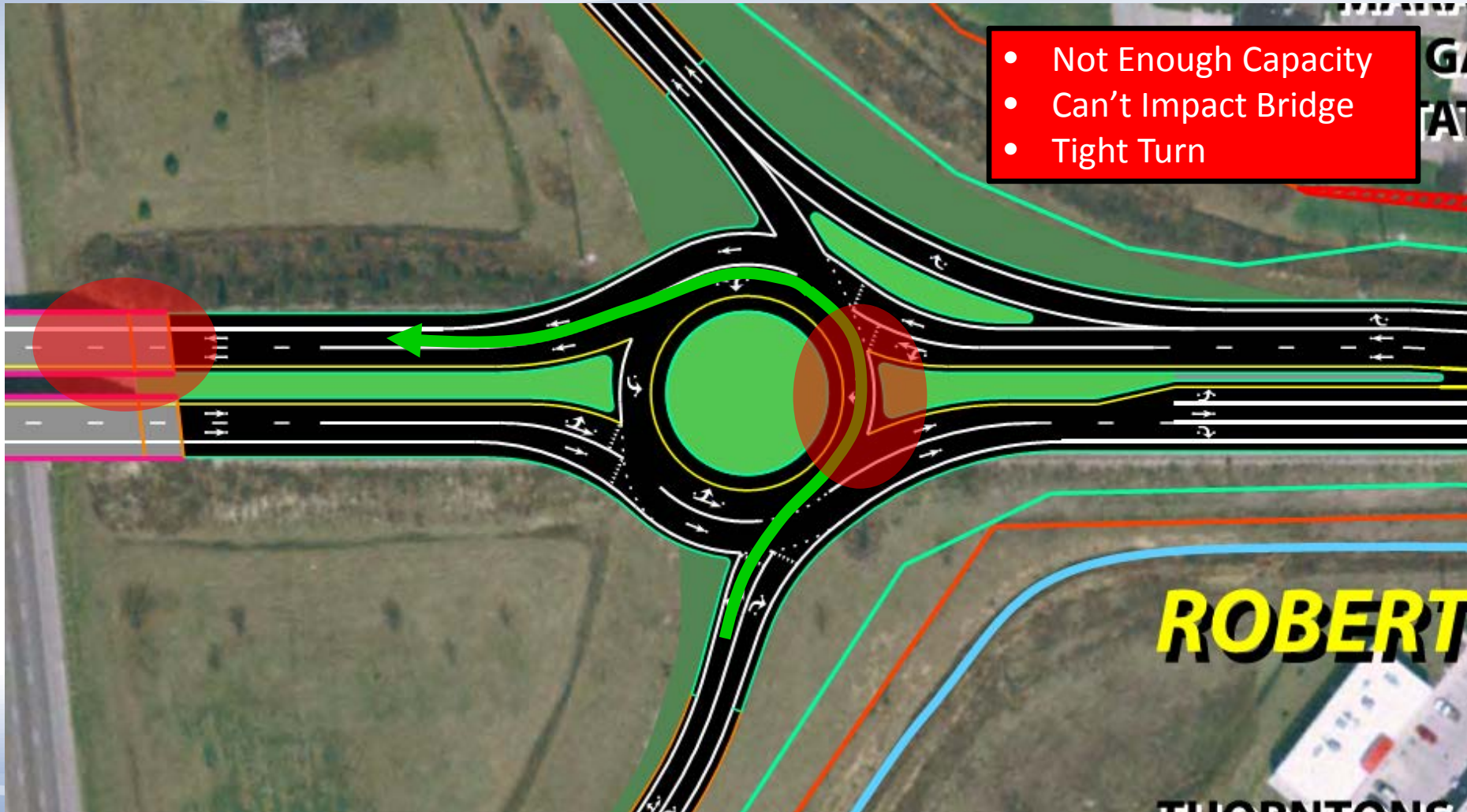


# Alternatives



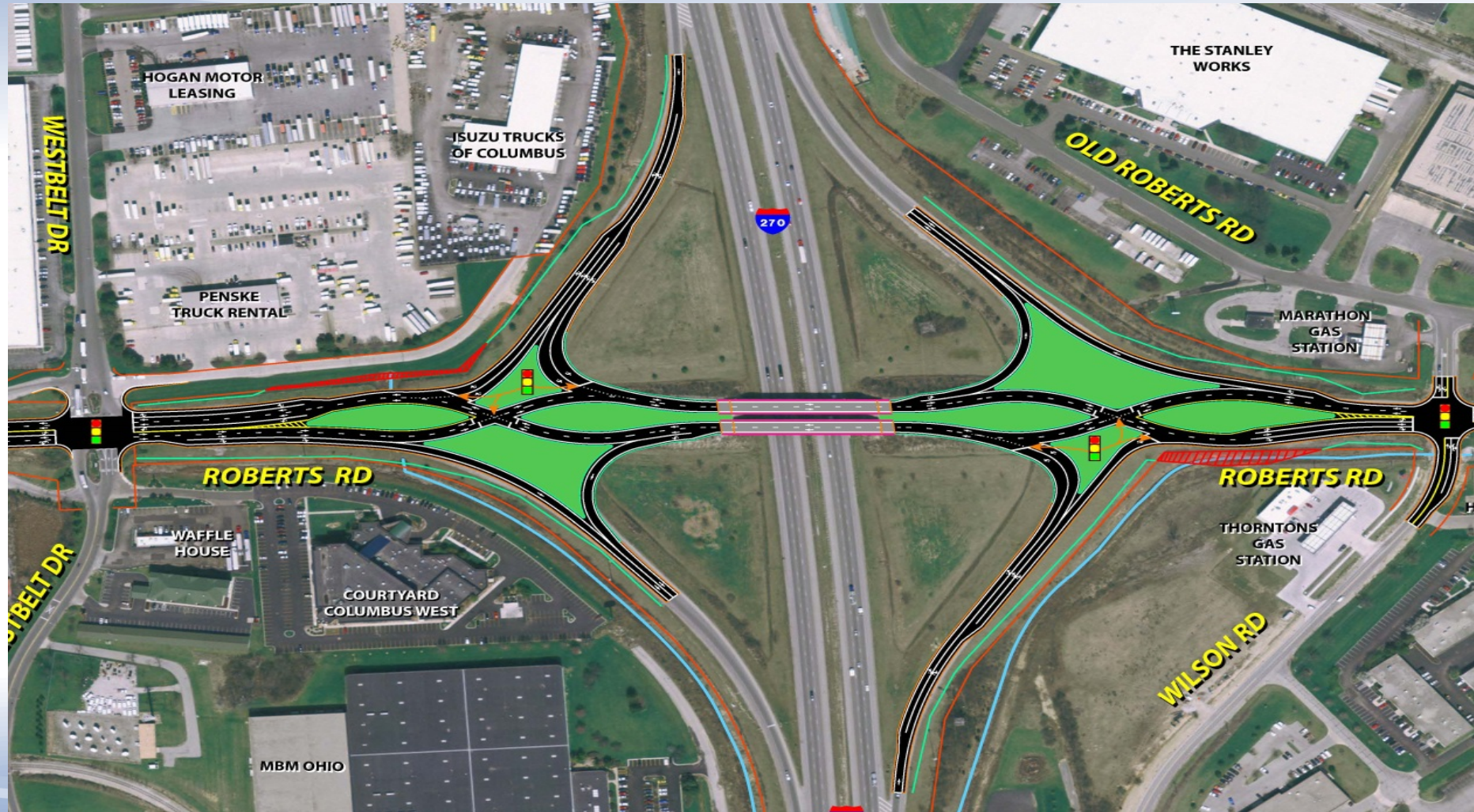


# Alternatives



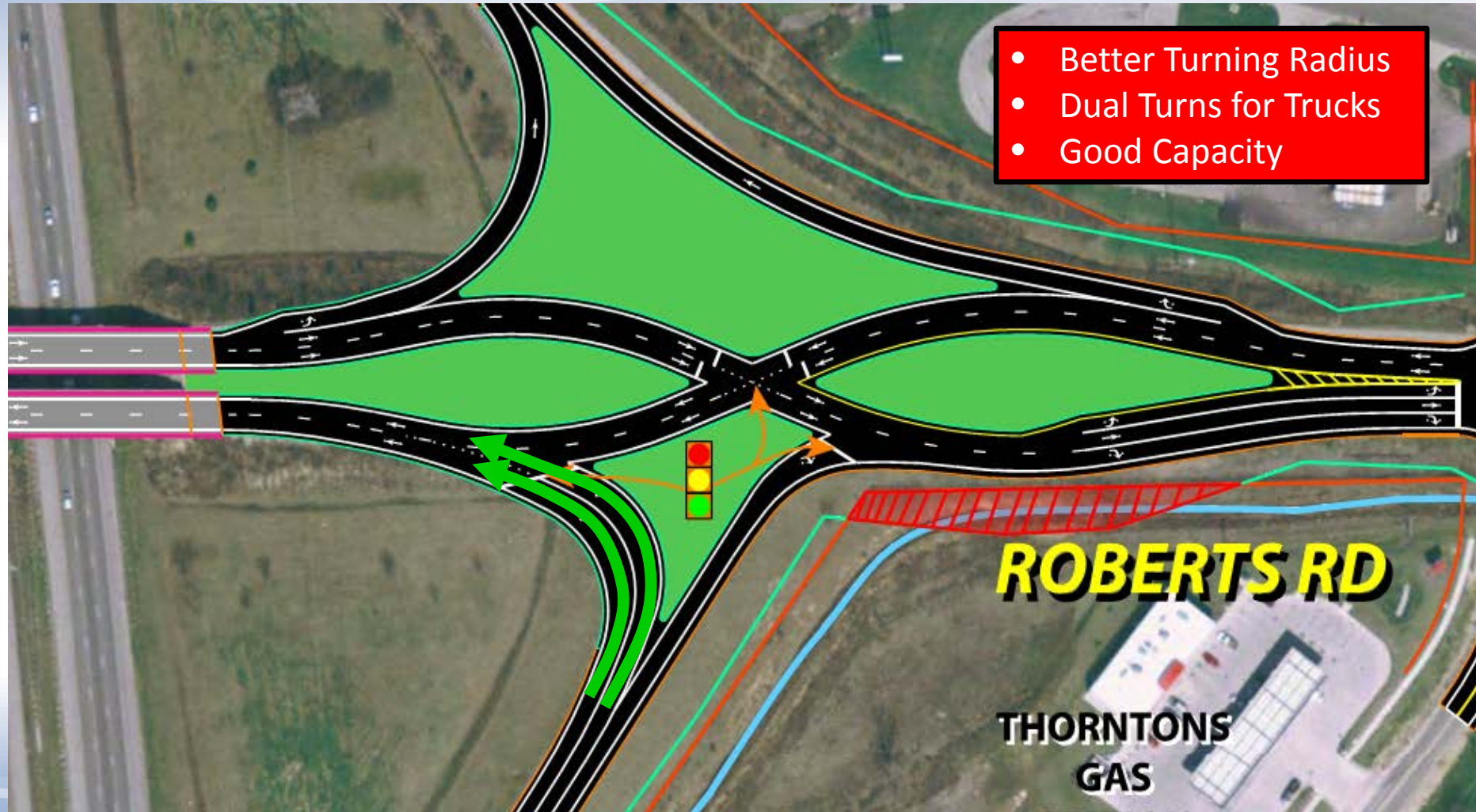


# Preferred Alternative - DDI





# Preferred Alternative - DDI





# Design Vehicles





# Design Vehicles





# Favorable Geometry

Design: 55  
Posted: 50

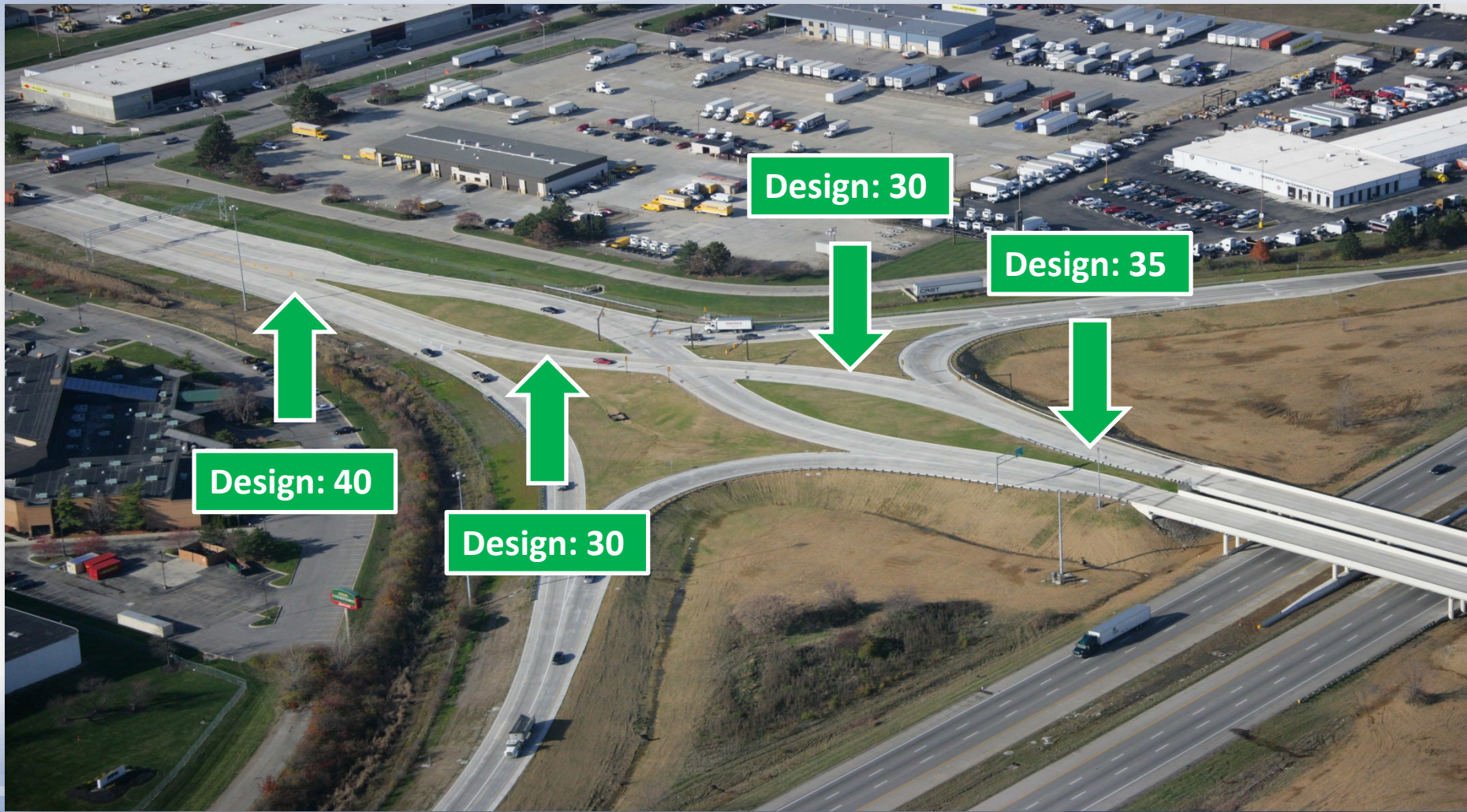


Design: 40  
Posted: 35



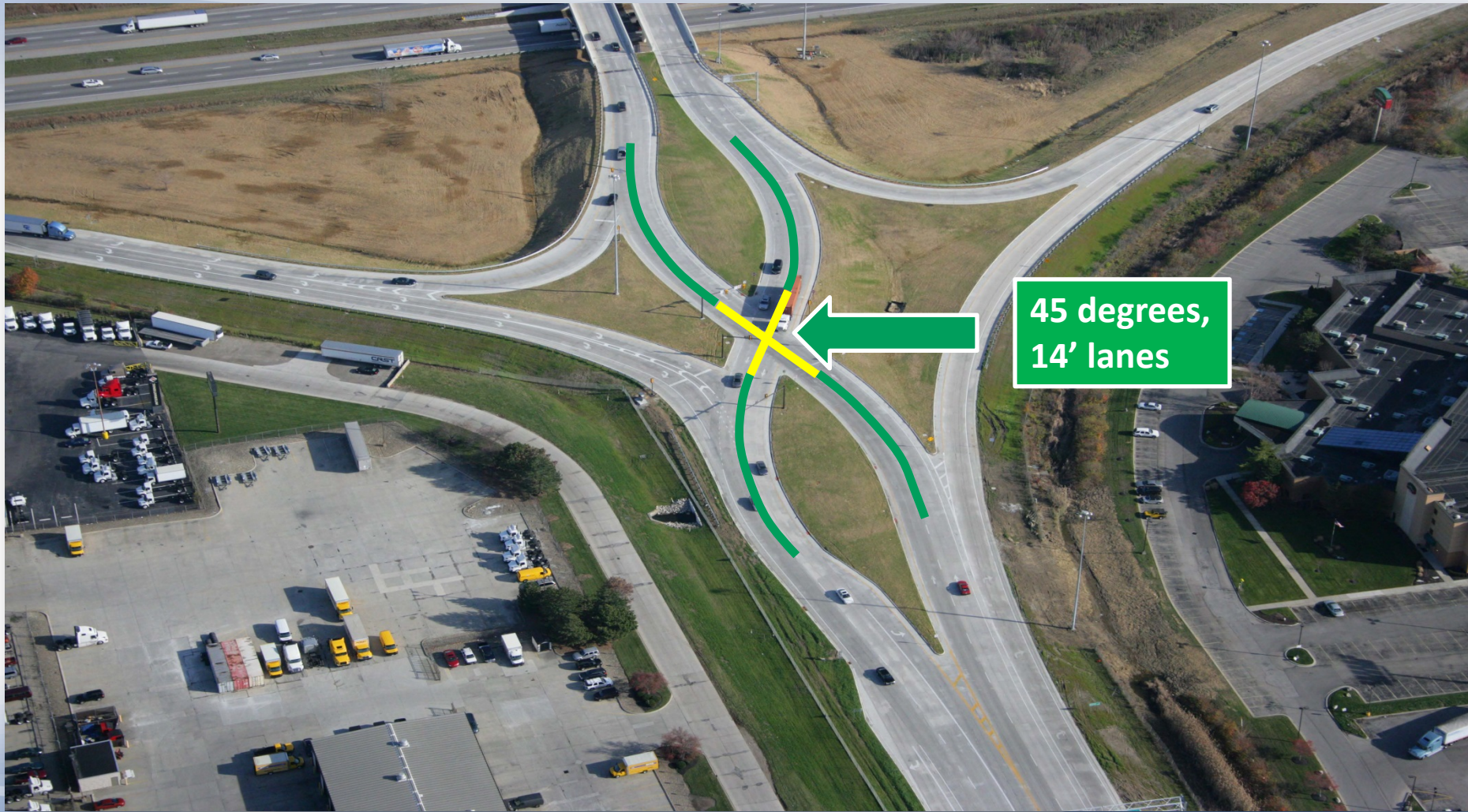


# Favorable Geometry





# Favorable Geometry



45 degrees,  
14' lanes



# Dedicated Bicycle Facilities





# Dedicated Bicycle Facilities





# Safety and Congestion Results

## SAFETY RESULTS

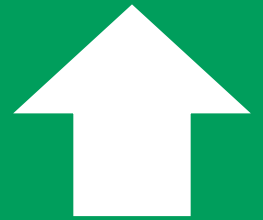
**48% REDUCTION IN  
TOTAL CRASHES!**



**70% REDUCTION IN  
INJURY CRASHES!**

## CONGESTION RESULTS

**Diamond: LOS F**



**DDI: LOS D!**

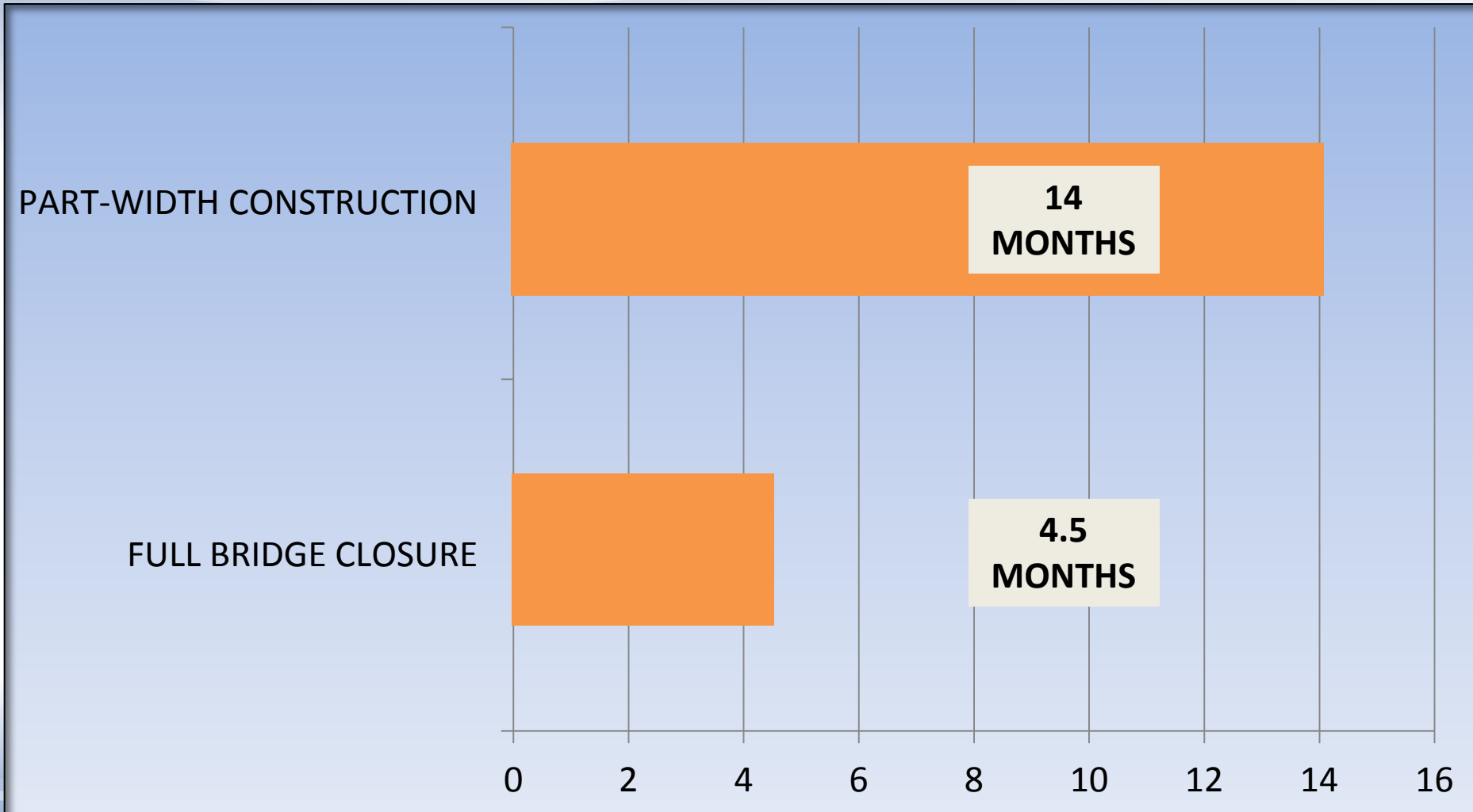


# Maintenance of Traffic





# Construction Duration





# Summary

- Getting Innovative Can Lead To:
  - Better Geometry that Accommodates Trucks – makes facility safer
  - Less Congestion. Trucks not sitting in traffic = more money being made!
  - Don't Dismiss Full-Closure Option – freight generators want their primary routes open ASAP





**BRIAN TOOMBS, PE**

614.459.2050

Brian.toombs@burgessniple.com

To download a **Point/Counterpoint Analysis** on Diverging Diamond Interchanges, please visit: [burgessniple.com/news-and-media/white-papers.aspx](http://burgessniple.com/news-and-media/white-papers.aspx)