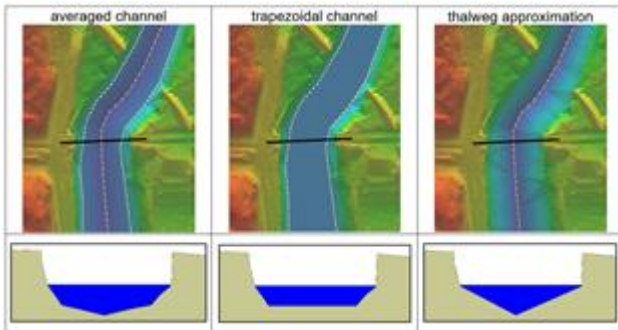


It's All About Conveyance

Creating Approximate Channel Data

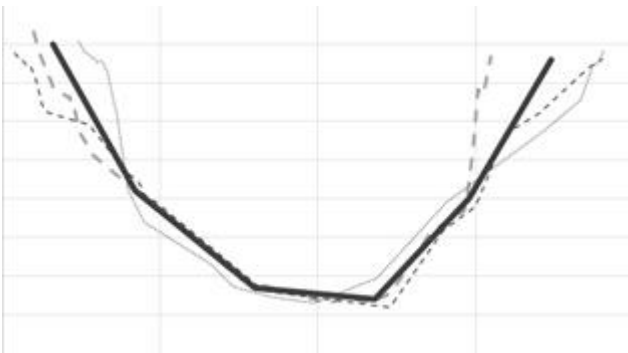


1. What is approximate channel data

Approximate channel data is used to represent the conveyance of the channel in locations where survey data is not available.

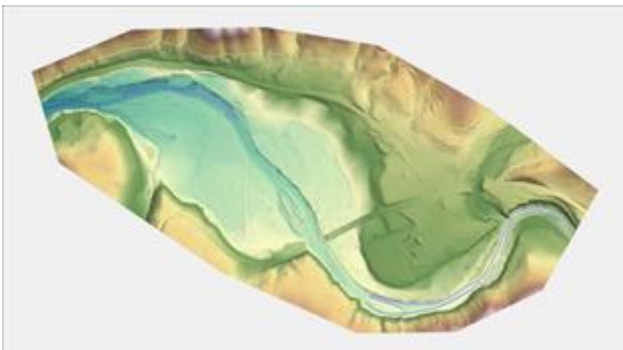
2. Determining channel geometry

There are three ways typically used to determine channel geometry, including; average channel cross section, trapezoidal, or thalweg lines to represent conveyance.



3. How to create channel data

Use the feature stamping tool or create breaklines then assign elevations based on the terrain data using the interpolation and transformation tools.



Related Resources:

[SMS Tutorials](#): Feature Stamping, Map Module, Scatter Data, Breaklines

[Scatter Interpolation - Wiki](#)

[Data Transform - Wiki](#)