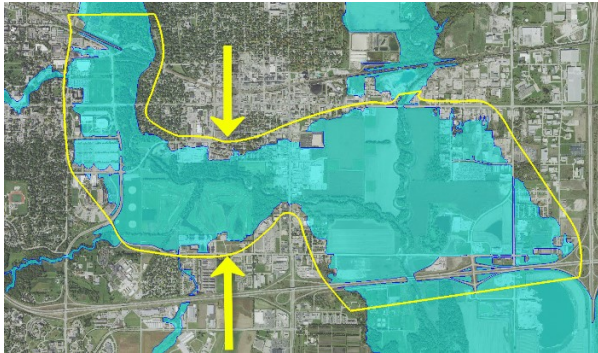


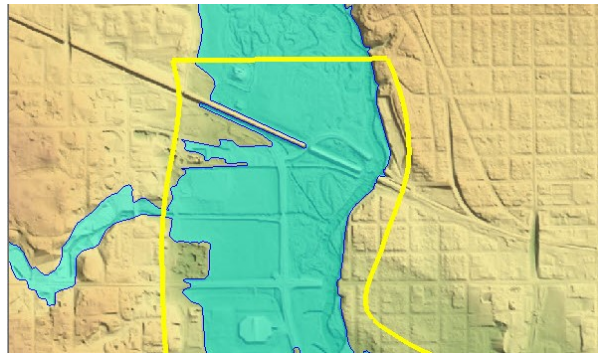
Setting Limits

Determining Appropriate Model Domain Limits



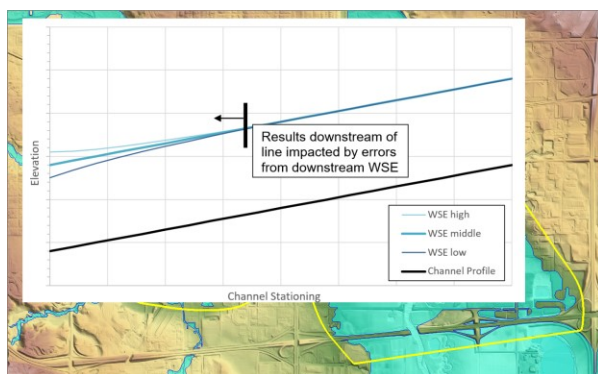
1. Lateral Extents

Determine appropriate lateral extents so that the largest flow to be modeled is contained within the model domain. Use references such as FEMA flood maps and topographic data for guidance.



2. Upstream Limits

Ideal locations are where the flow is most constricted with generally 1D flow conditions. Should be far enough upstream of project location to allow for natural distribution of flow within model. Rule of thumb is approximately 2 floodplain widths upstream of area of interest.



3. Downstream Limits

Ideal locations are the most constricted sections within the project reach, where the flow is predominantly in the downstream direction. Should be far enough downstream so approximate water surface at boundary does not impact the project location. Rule of thumb is approximately 2 floodplain widths downstream of area of interest.

Related Resources:

[2D Modeling Reference Document, Chapter 5.2](#)
[Application of the SRH-2D Boundary Condition Types](#)