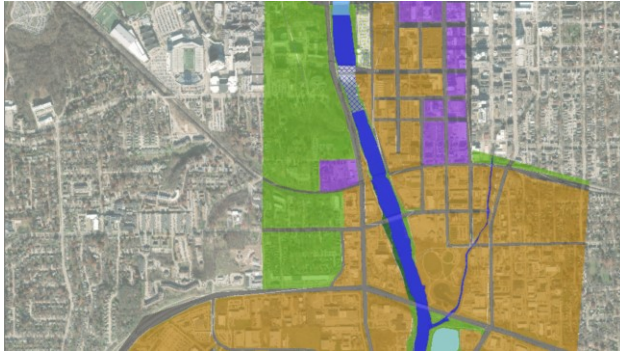


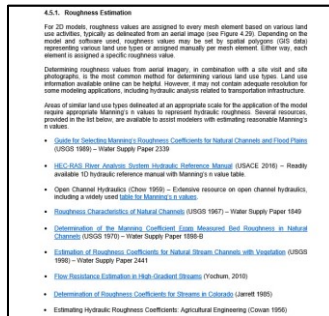
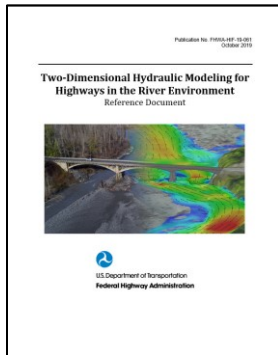
That's Rough

Assigning Material Roughness Values



Delineating Land Use Types

Use aerial imagery to delineate land use types, or import existing land use type data, at sufficient detail for model application and element size.



Assigning Roughness Values

Assign roughness values based on existing Manning's n value resources listed in the 2D Reference Document.



Calibration and Sensitivity

Calibrate models if data is available. If not conducting a sensitivity analysis is helpful to understand how model reacts to adjustments to roughness settings.

Related Resources:

[SMS Tutorials: Map Module](#)

[Depth Dependent Roughness for SRH-2D Materials](#)

[How Boundary Conditions and Materials are Mapped to a Mesh](#)

[SMS:SRH-2D Coverages – Wiki](#)

[SMS:SRH-2D Material Properties - Wiki](#)