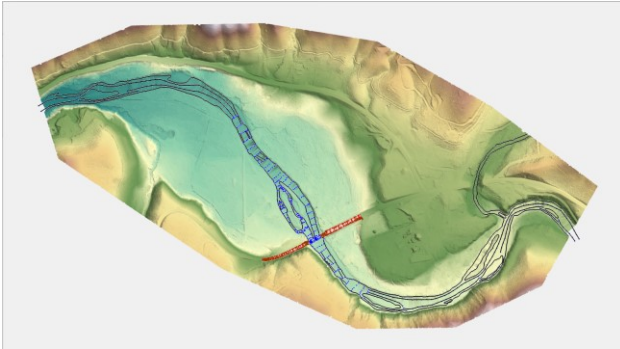


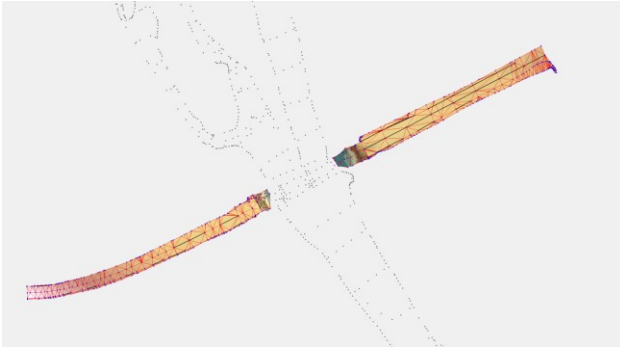
Bringing It All Together

Merging Terrain Data



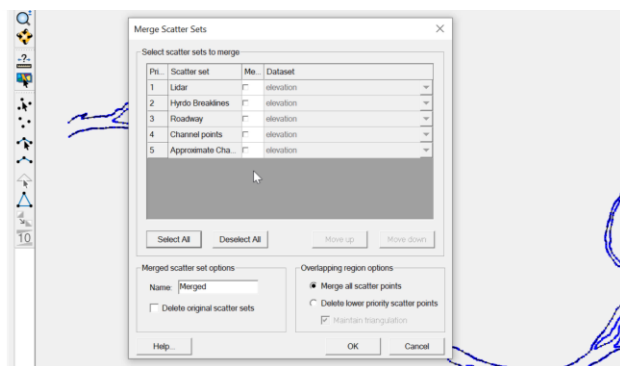
1. Data Types

Terrain data may include lidar, hydro-breaklines, roadway survey, channel survey, or other elevation data. Most data types require processing outside or inside of SMS before merging.



2. Review Triangles and Surface

Review data set triangles and 3D surface prior to merging. Check for external triangles that would create erroneous terrain when merged.



3. Merge and Review

Choose the order of data sets from highest to lowest priority with overlapping datasets. Highest priority data is typically the most accurate, detailed, or recent. Review the final surface at dataset boundaries.

Related Resources:

[SMS Tutorials](#): Lidar and Lidar with Multiple Files, Scatter Data, Breaklines, Define Extents, Filter, Import/Export
[Importing lidar – video](#)
[Merge Scatter Sets - Wiki](#)