

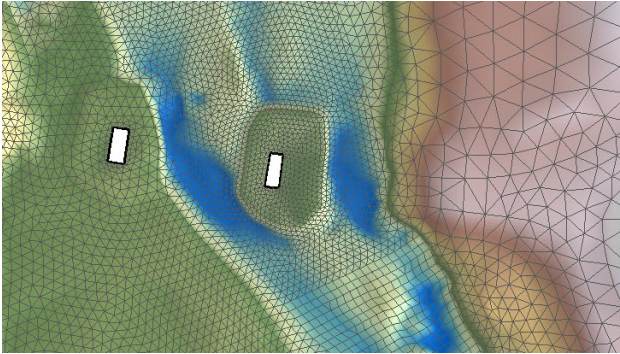
What Controls the Flow

Correctly Representing Hydraulic Controls



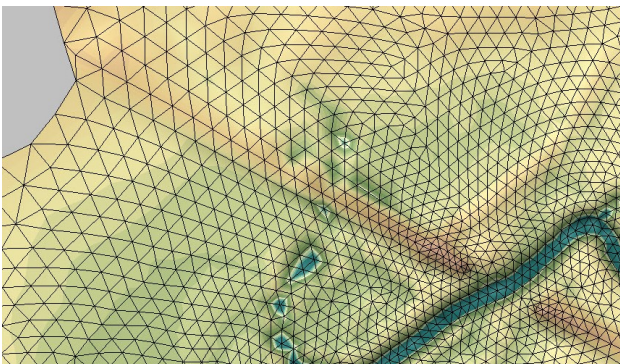
What Are Hydraulic Controls

Hydraulic controls are topographic or manmade features that have a significant impact, or control, on how water is conveyed through an area.



Mesh Density

Based on the model application appropriate meshes can be developed with enough density to sufficiently represent important hydraulic controls in the project area.



Element Edges

Element edges must be aligned to hydraulic controls for the model to be able to correctly represent them in the mesh. This is also true for models with sub-grid scale resolution.

Related Resources:

[SMS Tutorials](#): Mesh Editing, Mesh Generation
[SMS:SRH-2D Arcs- Wiki](#)

