

Fact Sheet

TNM 3.1



U.S. Department of Transportation
Federal Highway Administration

FHWA-HEP-21-043

Continuing Improvements Based on User Feedback

The Federal Highway Administration's (FHWA) Traffic Noise Model (TNM) is a software application for modeling highway traffic noise. TNM 3.1 is the latest version of this software. TNM 3.1 is an important update to the previous version - TNM 3.0. The FHWA received much insightful user feedback regarding the installation, hardware and software requirements, runtimes, acoustics, and workflows in TNM 3.0. Although the underlying acoustics remain the same in TNM 3.1, the FHWA has implemented several improvements to the Graphical User Interface (GUI) and workflows based on this feedback.



New Features:



Inclusion of an installer, **reduced run times** through parallel processing (beta), and **removal of the database saving structure** to allow faster file saving and loading.



Improvements to the Barrier Design Table to show **sound source contributions** by barrier segment and ability to **filter and sort the data** in this table.



Improvements to **stabilize the Plan and 3D Views** including better interactions between the Plan Builder and the data model. Renaming the Plan View to the **Plan Builder** to reflect that is an interactive portion of TNM, rather than a review window.



Enhanced **file import** of TNM 2.5 projects and of project files with coordinate systems, projections, and adjustments.



Fixed several bugs including an issue where **Ground Zones** would generate an error if they contained a keyhole of different ground type within their boundary.



Updated **documentation and training**. This includes updating the Technical Manual, User's Guide/Help Menu, and FAQs; and creating new documentation for XML file importing. The Instructor-led course and YouTube video playlist **videos** will also be updated.

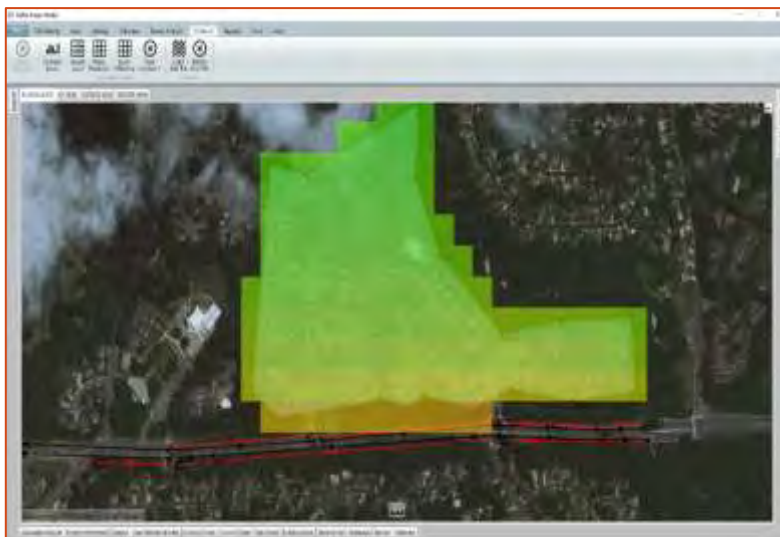
TNM 3.1 improved the **graphical user interface** and behind-the-scenes workflows.



Assistance and Training:

Technical Assistance: TNMHelp@dot.gov

Instructor-led Training: via the [FHWA Resource Center](#)



YouTube Video Playlist

Available Topics:

- Installation
- Versions
- GUI Overview
- Importing a Project
- Creating a Project
- Inputting Roadways
- Inputting Barriers
- Barrier Analysis Tool
- Parallel Barriers
- Input Heights Report

New videos added periodically

<https://www.fhwa.dot.gov/environment/noise/training/>

More Information

https://www.fhwa.dot.gov/environment/noise/traffic_noise_model/tnm_v31/index.cfm

The U.S. Government does not endorse products or manufacturers. Trademarks or manufacturers' names appear in this presentation only because they are considered essential to the objective of the presentation. They are included for informational purposes only and are not intended to reflect a preference, approval, or endorsement of any one product or entity.