

Rt. 220 South Bound

Long $79^{\circ} 51' 53''$ W

Lat $36^{\circ} 54' 48''$ N

4 in. Trinity GR-9

4/25/2012

Rt. 220 South Bound

Long $79^{\circ} 51' 53'' W$

Lat $36^{\circ} 54' 48'' N$

4 in. Trinity GR-9

4/25/2012

GPS Status

Date: 25.04.01 10:05 PM
Vehicle Speed: 0.0 mph
Altitude: 347 yd
HDOP: 0.9
Number of Satellites: 10
Longitude: 79°51'52"W
Latitude: 36°54'40"N

Active Inactive



GPS Status

Date: 25.04.01 19:08 PM
Velocity: 0.0 mph
Altitude: 347 yd
HDOP: 0.9
Number of Sat: 10
Longitude: 79°51'52W
Latitude: 30°54'48N

Active Inactive





Rt. 220 South Bound

Long $79^{\circ} 51' 53'' W$

Lat $36^{\circ} 54' 48'' N$

4 in. Trinity GR-9

4/25/2012

Rt. 220 South Bound

Long $79^{\circ} 51' 53''$ W

Lat $36^{\circ} 54' 48''$ N

4 in. Trinity GR-9

4/25/2012







Rt. 220 South Bound
Long 79° 51' 53 W
Lat 36° 54' 48 N
4 in. Trinity GR-9
4/25/2012











Rt. 220 South Bend
long. 79° 51' 53 W
Lat 36° 54' 48 N
4 mi. Trinity GE-7
4/25/2012

Rt. 220 South Bound

Long $79^{\circ} 51' 53'' W$

Lat $36^{\circ} 54' 48'' N$

4in. Trinity GR-9

4/25/2012










Rt. 220 South Bound


Long $79^{\circ} 51' 53'' W$

Lat $36^{\circ} 54' 48'' N$

4in. Trinity GR-9

4/25/2012



Rt. 220 South Bound 
Long $79^{\circ} 51' 53''$ W
Lat $36^{\circ} 54' 48''$ N
4 in. Trinity GR-9
4/25/2012



Rt. 220 504

Long $79^{\circ} 51'$

Lat $36^{\circ} 54'$

4 in. Trinity

4/25/201







Long 19

Lat 36°

4 in. Trin.

4/25

Rt. 220 South Bound

Long $79^{\circ} 51' 53'' W$

Lat $36^{\circ} 54' 48'' N$

4 in. Trinity GR-9

4/25/2012

Rt. 220 South Bound

Long $79^{\circ} 51' 53'' W$

Lat $36^{\circ} 54' 48'' N$

4in. Trinity GR-9

4/25/2012



Rt 220 South Bend
Coy 75° 51' 53" W
Coy 36° 54' 48" N
Trinity CC-9
9/25/2012













Rt. 220 South Bound

Long 79° 51' 53 W

Lat 36° 54' 48 N

4in. Trinity GR-9

4/25/2012

Rt. 220 South Bound

Long $79^{\circ} 51' 53'' W$

Lat $36^{\circ} 54' 48'' N$

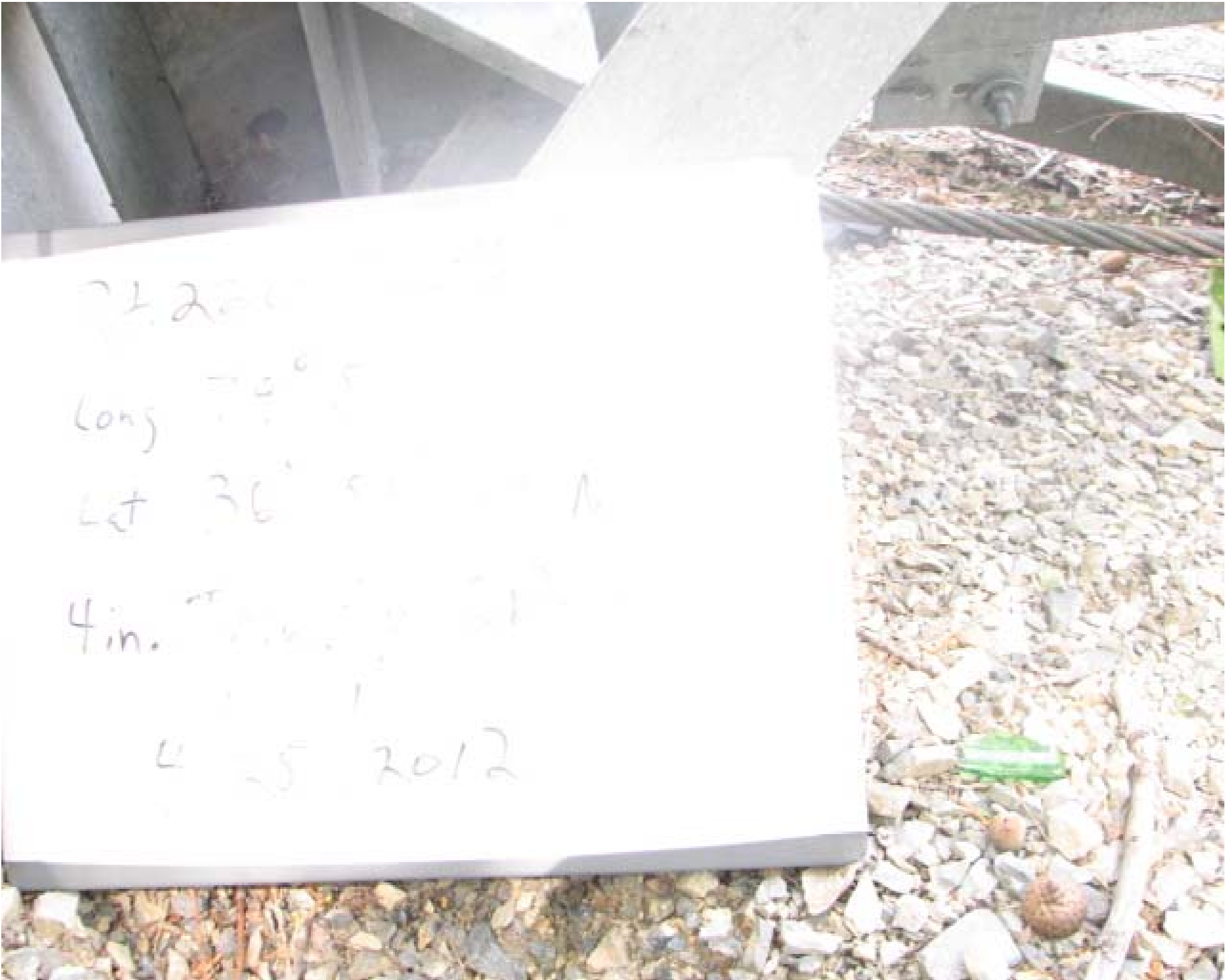
4 in. Trinity GR-9

4/25/2012









220

Long = 0.5

Let 36' 5" N

4 in. ...

4 25 2012

Rt. 220 South Bound


Long $79^{\circ} 51' 53'' W$

Lat $36^{\circ} 54' 48'' N$

4 in. Trinity GR-9

4/25/2012



Rt. 220 South Bound 
Long 79° 5' 3 W
Lat 36° 54' 48 N
4 in. Trinity GR-9









Rt. 220 South Bound

Long $79^{\circ} 51' 53'' W$

Lat $36^{\circ} 54' 48'' N$

4in. Trinity GR-9

4/25/2012



Rt 220 South Road
Long 79° 51' 53" W
Lat 36° 59' 48" N
4 mi. Trinity CR-19
4/25/2012



Rt. 220 South Bound
Long 79° 51' 53 W
Lat 36° 54' 48 N
4 mi. Trinity GR-7







































































































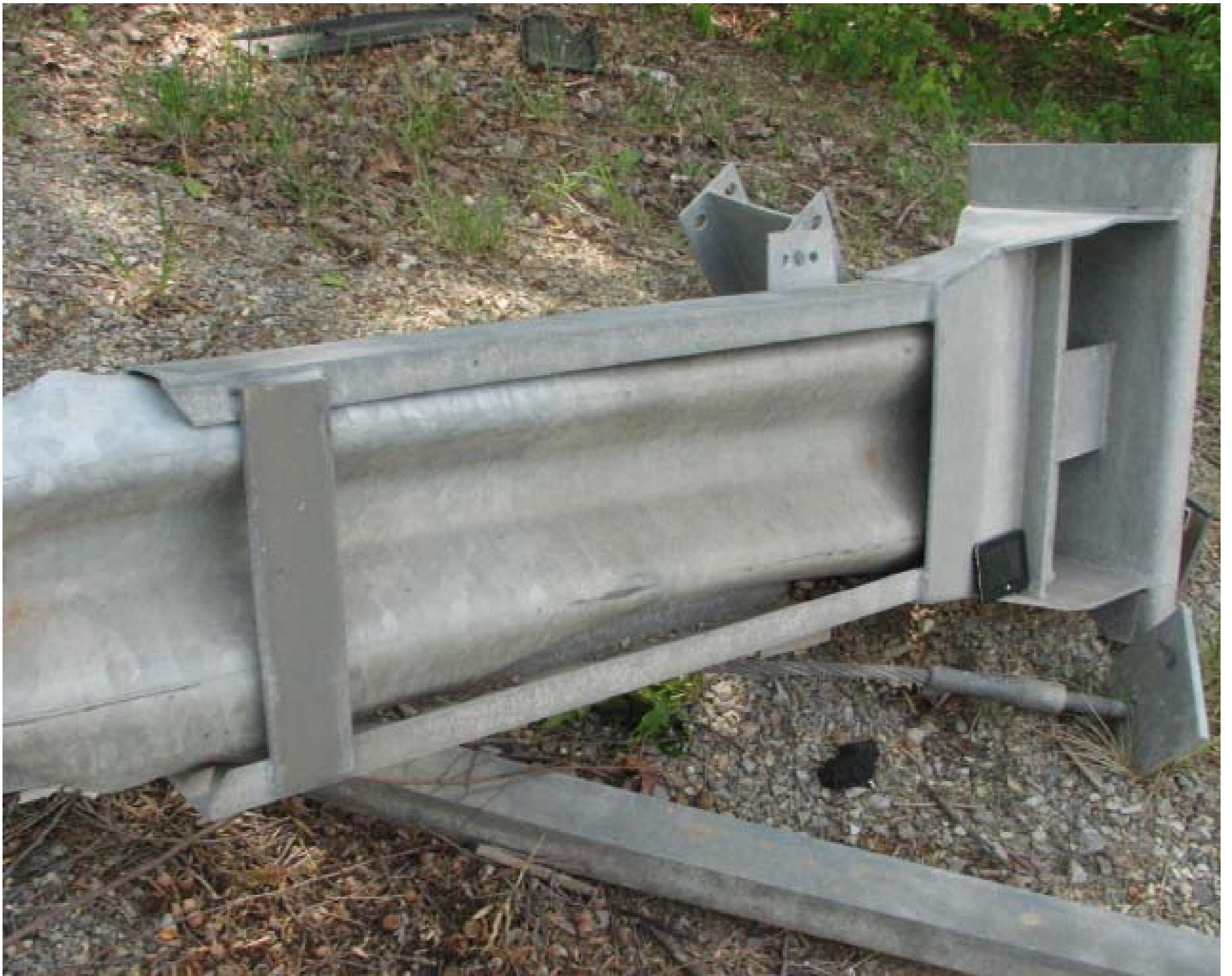




































24 2205 South Road
100 79° 21' 23" W
40 34° 29' 49" W
100 79° 21' 23" W
4/25/2012

Rt. 220 South Bound

Long $79^{\circ} 51' 53''$ W

Lat $36^{\circ} 54' 48''$ N

4 in. Trinity GR-9

4/25/2012

Rt. 220 South Bound

Long $79^{\circ} 51' 53''$ W

Lat $36^{\circ} 54' 48''$ N

4 in. Trinity GR-9

4/25/2012

Rt. 220 South Bound

Long $79^{\circ} 51' 53'' W$

Lat $36^{\circ} 54' 48'' N$

4 in. Trinity GR-9

4/25/2012