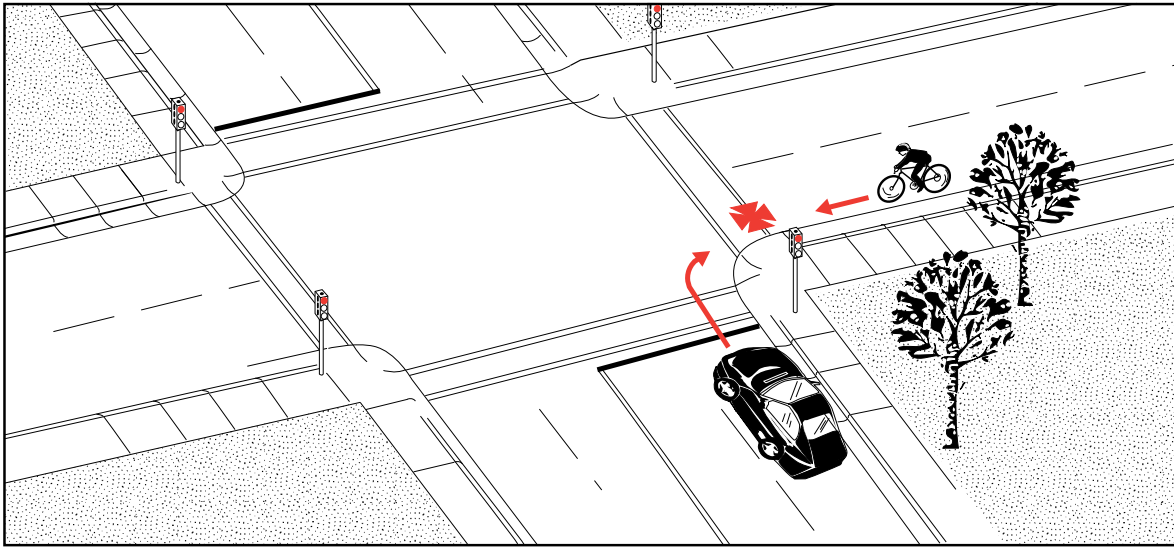


# Right On Red

**Frequency:** 108 cases; 3.6% of all crashes  
**Severity:** 6% resulted in serious or fatal injuries



**Description:** At an intersection controlled by a signal, the motorist struck the bicyclist while making a right turn on red.

**Summary:** In comparison to all crashes, this crash was likely **not** to involve child (age 0 to 9) bicyclists.

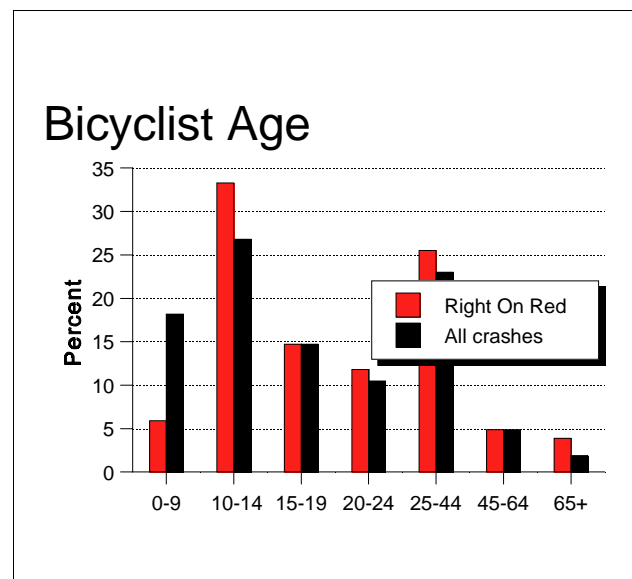
More than 1/2 occurred at larger multilane intersections (5 and 6+ lanes). Almost 85 percent took place on roads with a speed limit between 50 to 70 km/h.

Eighty percent of bicyclists were riding facing traffic whether “in road” or “off road.”

Bicyclists were riding in a **marked** crosswalk in 45 percent. A marked crosswalk was involved in only 7 percent of all crashes combined.

This crash had a far lower incidence of serious injuries than the average. There were no

fatalities.



**Figure 68.** Bicyclist age in “Right On Red.”