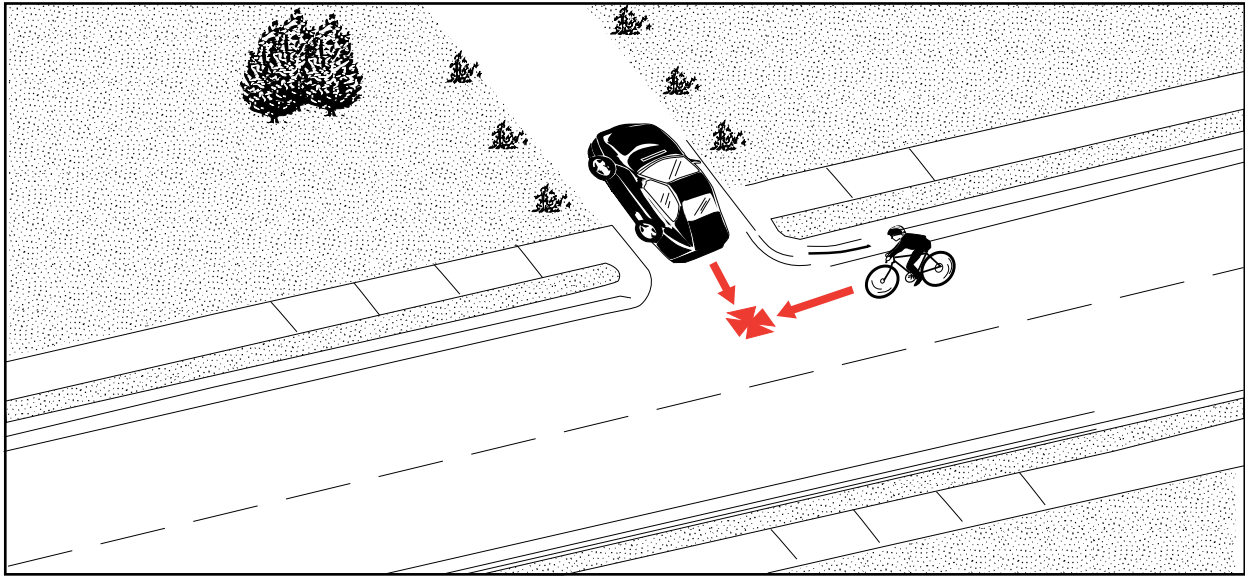


Backing

Frequency: 47 cases; 1.6% of all crashes
Severity: 2% resulted in serious or fatal injuries



Description: The crash involved a motor vehicle which was backing. Note: Crash type “Play Vehicle” had an additional 7 backing incidents, which would bring the total for “Backing” to 54, or 1.8 percent of all crashes.

Summary: In comparison to all crashes, this crash was more likely to involve child (age 0 to 9) and middle adult (age 45 to 64) bicyclists.

Sixty-two percent occurred on the roadway. Of those, all happened on one- or two-lane roads. More than 40 percent had a speed limit of 40 km/h or less.

Of the 38 percent non-roadway, 19 percent took place in a parking lot, and in 19 percent the bicyclist and motorist were both in a driveway or alley.

This crash had a far lower incidence of serious injuries than the average. There were no

fatalities.

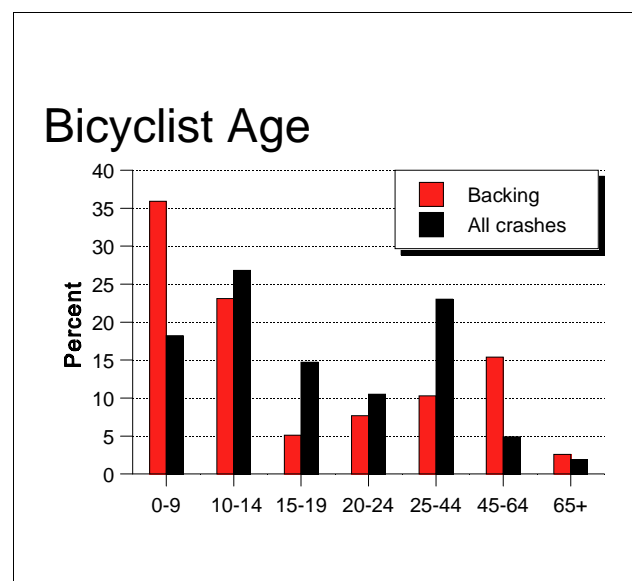


Figure 108. Bicyclist age in “Backing.”