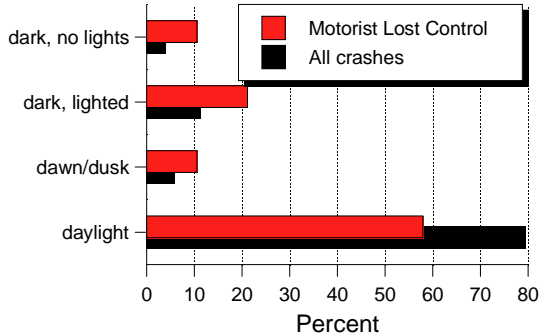
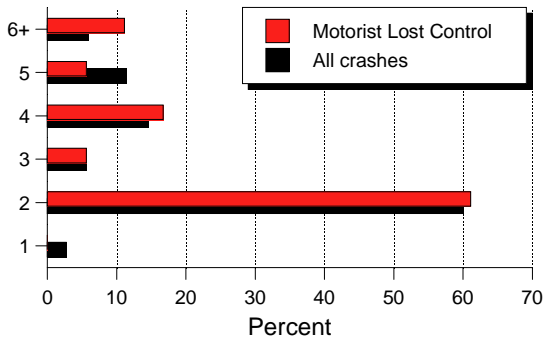


# Motorist Lost Control

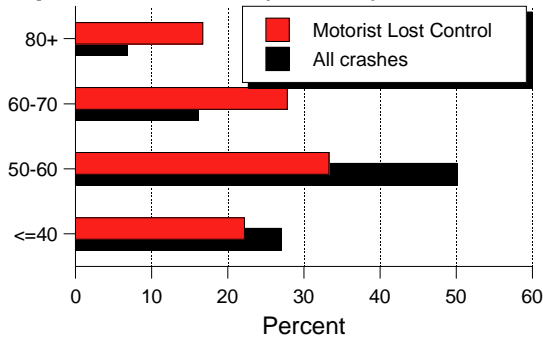
## Light Condition



## Number of Lanes



## Speed Limit (km/h)



**Figure 46.** Light condition, number of lanes, and speed limit in “Motorist Lost Control.”

## Development Character

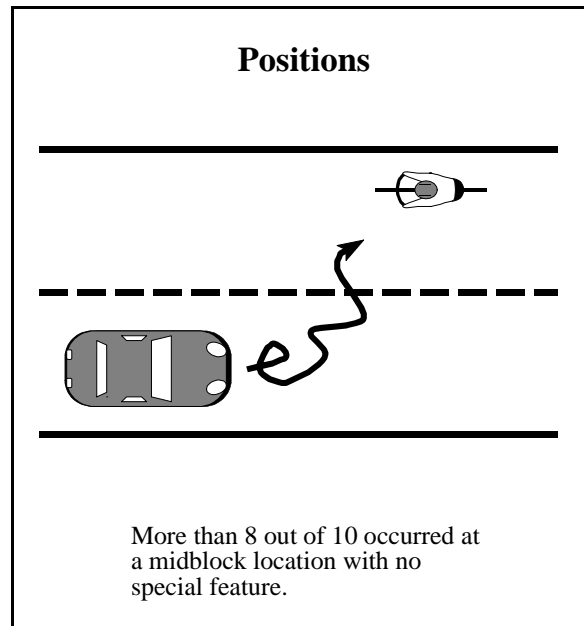
- ▶ Urban ..... 58%
- ▶ Rural ..... 42%

## Traffic Control

- ▶ None ..... 84%
- ▶ Traffic Signal ..... 0%
- ▶ Stop Sign ..... 11%
- ▶ Other ..... 5%

## Road Feature

- ▶ No special feature .. 84%
- ▶ Intersection ..... 11%
- ▶ Other ..... 5%



**Figure 47.** Positions in “Motorist Lost Control.”