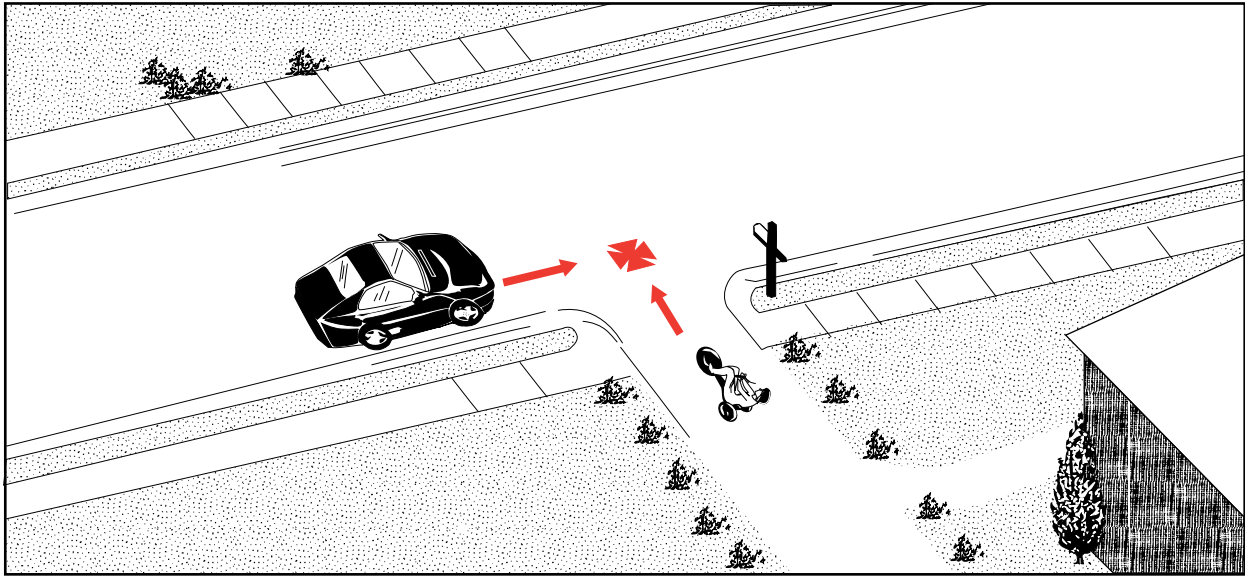


Play Vehicle

Frequency: 16 cases; 0.5% of all crashes
Severity: 28% resulted in serious or fatal injuries



Description: The bicyclist was riding a child's vehicle such as a tricycle, a "Big Wheel" type tricycle, or a bicycle with training wheels.

Summary: This crash involved 100 percent child (age 0 to 9) bicyclists, daylight conditions, and two-lane roads (for those crashes that were roadway-related).

Sixty-three percent occurred on the roadway and 37 percent were non-roadway. Forty-four percent of motor vehicles were backing.

This crash tended to be more severe than the average.

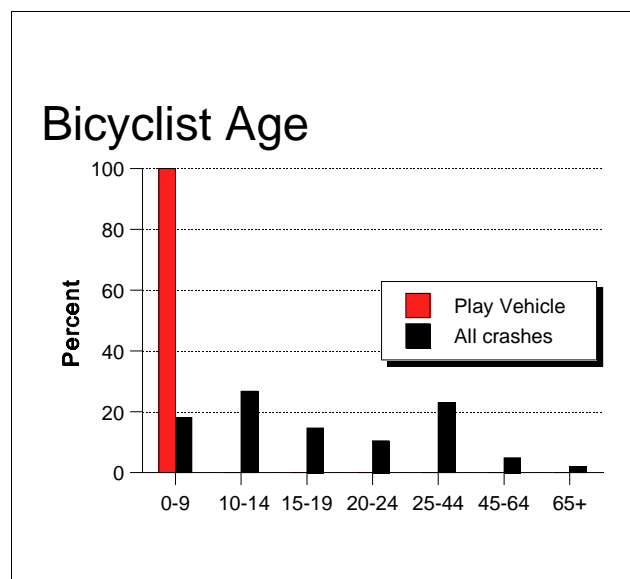


Figure 105. Bicyclist age in "Play Vehicle."