

Safety Performance Management achieved through Predictive Methods

Today's Presenters

Esther Strawder

FHWA-Office of Safety

Safety Specialist

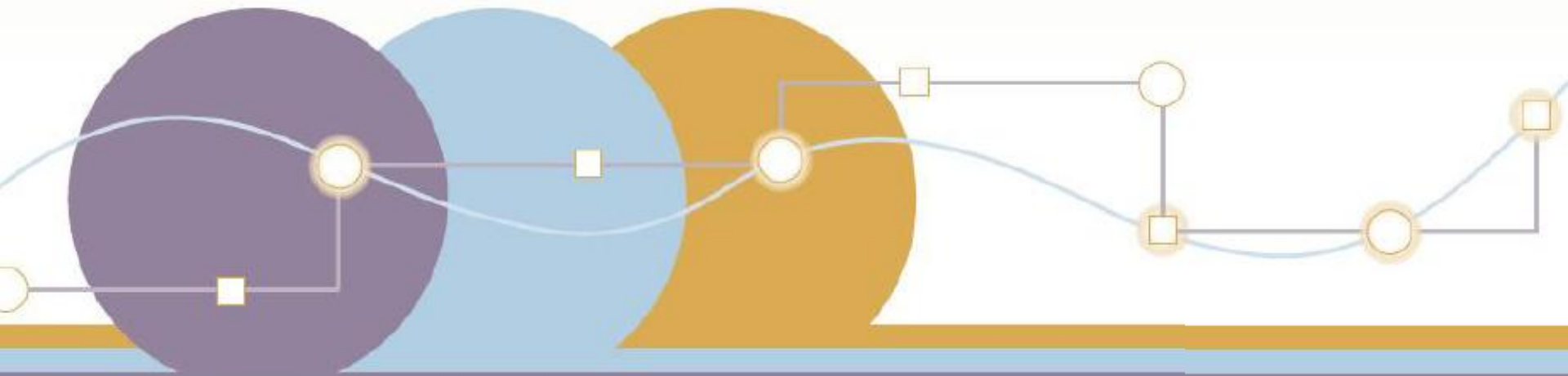
Esther.Strawder@dot.gov

Highway Safety Manual: A Tool for Managing Performance

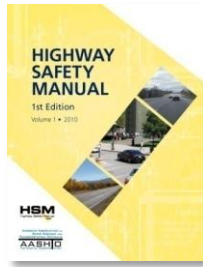
March 25, 2013

TPM Exchange Webinar
Office of Transportation Performance Management

Esther Strawder
FHWA – Office of Safety



Transportation Performance Management and the HSM



TPM benefits:

- Provides a means to **more efficient investment** of Federal transportation funds
- Focuses on **national transportation goals, increasing the accountability** and transparency of the Federal highway programs
- Improves transportation **investment decision-making** through **performance-based planning and programming**

HSM benefits :

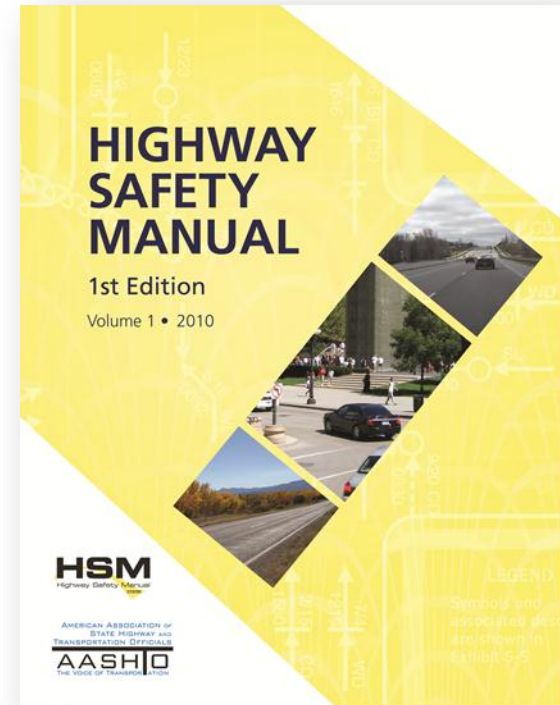
- Enables better targeted **safety investment** and more informed **decision making**
- Supports **improved safety outcomes** i.e. reduction in fatal and serious injury crashes
- Applies to all phases of the project development process including **planning and programming**



Highway Safety Manual

What can the HSM do for you?

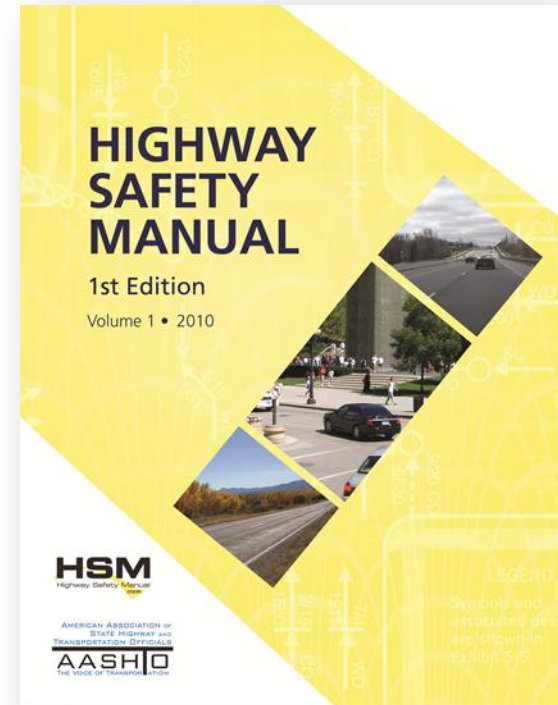
- Provides practitioners with the best factual information and scientific methods for safety analysis
- Enables user to quantify safety performance
- Introduces analysis and evaluation methods that lead to more reliable selection of projects



Highway Safety Manual

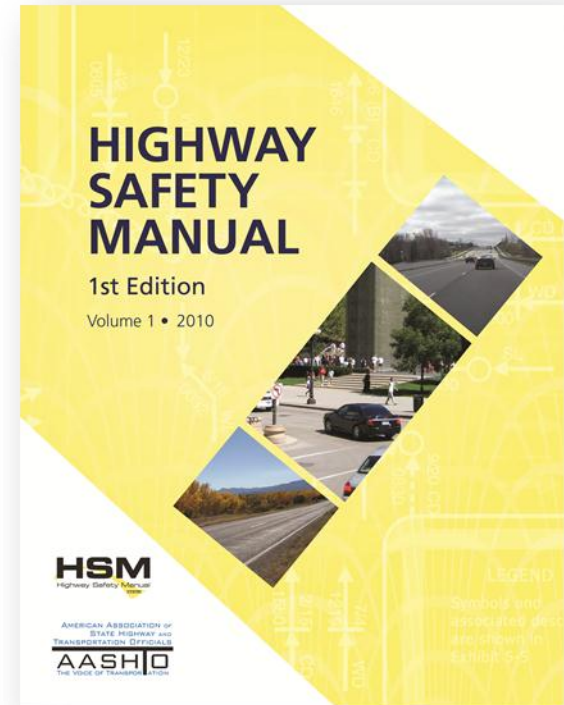
How does the HSM help manage performance?

- Presents alternative performance measures to quantify safety
- Identifies strengths and limitations of traditional and new alternative performance measures
- Shows users how to predict a project's safety performance



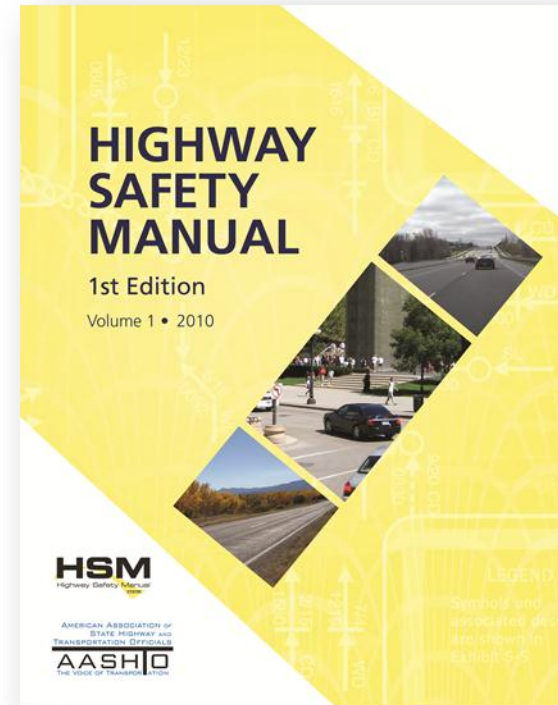
Highway Safety Manual

- Roadway Safety Management Process
 - Network Screening
 - Diagnosis
 - Select Countermeasures
 - Economic Appraisal
 - Prioritize Projects
 - Safety Effectiveness Evaluation

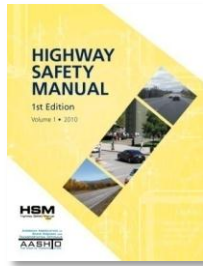


Highway Safety Manual

- Predictive Methods – Estimates expected average crash frequencies by facility type:
 - Rural 2-lane, 2 way
 - Rural multi-lane highways
 - Urban and suburban Arterials
- Safety Performance Functions (SPFs) equations that estimate expected crash frequency based on data
- Crash Modification Factors (CMFs) factor that estimates the potential changes in crash frequency for selected countermeasures



HSM-related Analysis Tools



Network-level Analysis

- **SafetyAnalyst** (AASHTOWare)—network-level safety management software (www.safetyanalyst.org)
- **Systemic Safety Project Selection Tool** (FHWA): Step-by-step process to conduct systemic safety analysis and planning (<http://safety.fhwa.dot.gov/systemic>)

Project-level Analysis

- **Interactive Highway Safety Design Model (IHSDM)**—Faithful implementation of Predictive Methods (Part C) for project-level analyses (www.ihsdm.org)
- **CMF Clearinghouse** (FHWA)—searchable database of 4,000+ CMFs, including, but not limited to, HSM Part D CMFs (cmfclearinghouse.org)
- **HSM Part C Spreadsheets** (Various)—Facilitate Predictive Methods calculations



Contact: Esther Strawder
Esther.strawder@dot.gov

