

Transportation Performance Management

Getting ready for the 2024 Transportation Performance Management (TPM) Reporting through the Performance Management Form (PMF)

External Webinar: August 21, 2024



U.S. Department of Transportation
Federal Highway Administration



Disclaimer

- Except for the statutes and regulations cited, the contents of this presentation does not have the force and effect of law and is not meant to bind the States or the public in any way. This presentation is intended only to provide information regarding existing requirements under the law or agency policies.



Agenda

- Opening Remarks
 - *Pete Stephanos*
- Resources / Roles & Responsibilities
 - Eileen Vaughan
- PMF Overview and Demo
 - Vicki Miller
- FHWA Review
 - Nelson Hoffman
- 2020 Decennial Census for CMAQ Traffic Congestion Measures
 - Christopher Chang
- Significant Progress Determination
 - Nelson Hoffman



Opening Remarks: Communicating About Performance

Pete Stephanos

Director, Office of Stewardship, Oversight and Management



U.S. Department of Transportation
Federal Highway Administration



TPM Reporting - Key Messages

With several years of consistent national performance data, the TPM reporting process is:

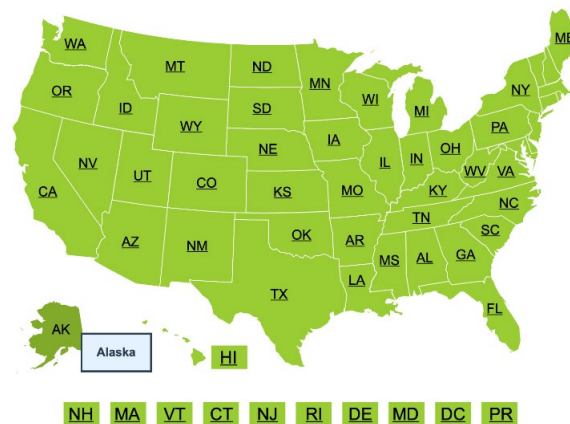
- **Complete.** All 52 State DOTs continue to report performance data and targets for each of 17 performance measures.
 - FHWA continues to update and published the [State Performance Dashboards and Reports](#), sharing all data and targets in one place.
- **Accountable.** State DOTs and MPOs continue to work together to set data-informed targets. They are accountable for managing performance to make progress toward the targets they set.
 - FHWA continues to facilitate the collaborative target-setting process, providing guidance, training, and technical assistance to State DOTs and MPOs.
- **Consistent.** With data from consistent measures across all 52 States, all stakeholders can more easily track trends and benchmark their performance.
 - FHWA can uniformly track performance data and tell a national story.



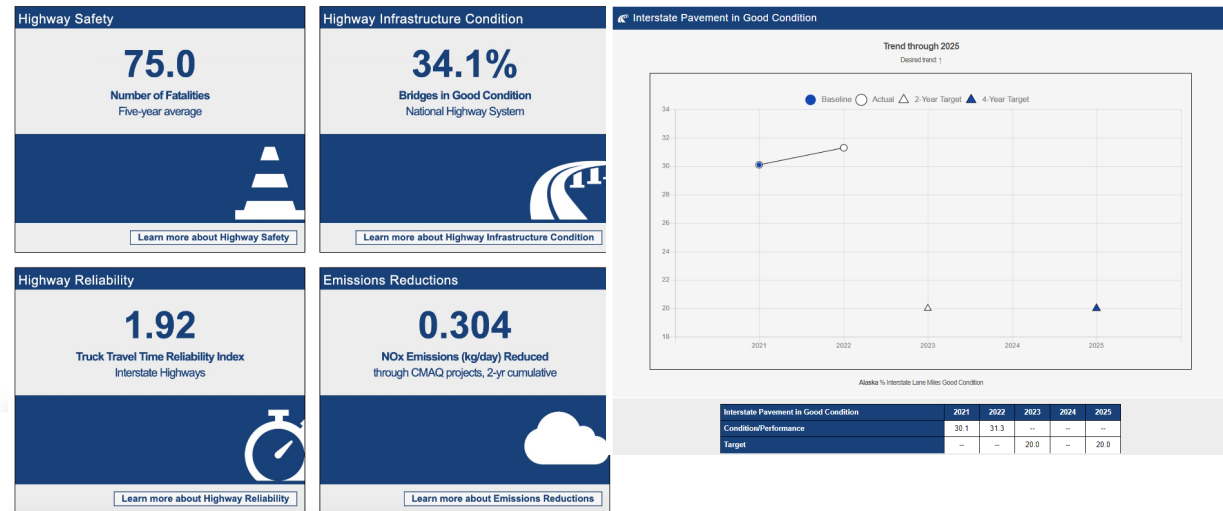
State Performance Reports: A Complete, Consistent Picture

All data submitted through 2022 now available:

<https://www.fhwa.dot.gov/tpm/reporting/state/>



State Performance Dashboard - Alaska



Resources / Roles & Responsibilities

Eileen Vaughan

Transportation Asset Performance Team



U.S. Department of Transportation
Federal Highway Administration



2024 Performance Reporting

- PMF will open 9/03/2024 for State DOTs to submit their reports by 10/01/2024.
- This year, State DOTs will submit one report:
 - Mid Performance Period (MPP) Progress Report in the PMF - for the pavement, bridge, highway reliability, freight, traffic congestion, and emissions measures



PMF Input Fields Documents

TPM Guidance web page at

<https://www.fhwa.dot.gov/tpm/guidance/>

- [Performance Management Form \(PMF\) Input Fields: Mid Performance Period \(MPP\) Progress Report Due October 1, 2024 \(dot.gov\)](#) (posted 6/7/2024)



Roles & Responsibilities: State DOT

- Identify available/needed data.
- Provide discussions of performance, progress, and investments.
- Provide discussion of how targets support long-term national goals and the relationship to other performance expectations.
- Collect and submit required data and reports.
- Document extenuating circumstances if applicable.
- Work with Division Offices to ensure accurate, complete, and timely submittal of the PMF.
- Submit Mid Performance Period Progress Report (MPP) on or before October 1, 2024.



Roles & Responsibilities: FHWA

- Liaison between State DOT, MPOs, and HQ.
 - All TPM questions should go through the Division Office.
- Understand the program requirements and to support TPM program delivery.
 - Share TPM supporting documents with the State DOT as they become available.
 - Track Key Implementation Dates.
 - Be familiar with the TPM website and the guidance documents.
- Provide State DOT technical assistance with their PMF development, including how to gain access to UPACS and the PMF, and enter data.
- Develop guidance and resources to support meeting reporting requirements.
- Determine applicability of measures.



Roles & Responsibilities: FHWA Cont'd.

- Prepopulated values in MPP.
- Administer the PMF.
- Review PMF for consistency and accuracy with program expectations within the State.
 - Monitor the target development process, and the coordination efforts between State DOTs and MPOs.
 - Understand the basis for the targets.
 - Monitor if there are any extenuating circumstances.
 - If resubmittal is appropriate, provide comments to the State DOT within the PMF that provide them with the information needed to revise their submittal.
- Provide technical assistance, training, and support.

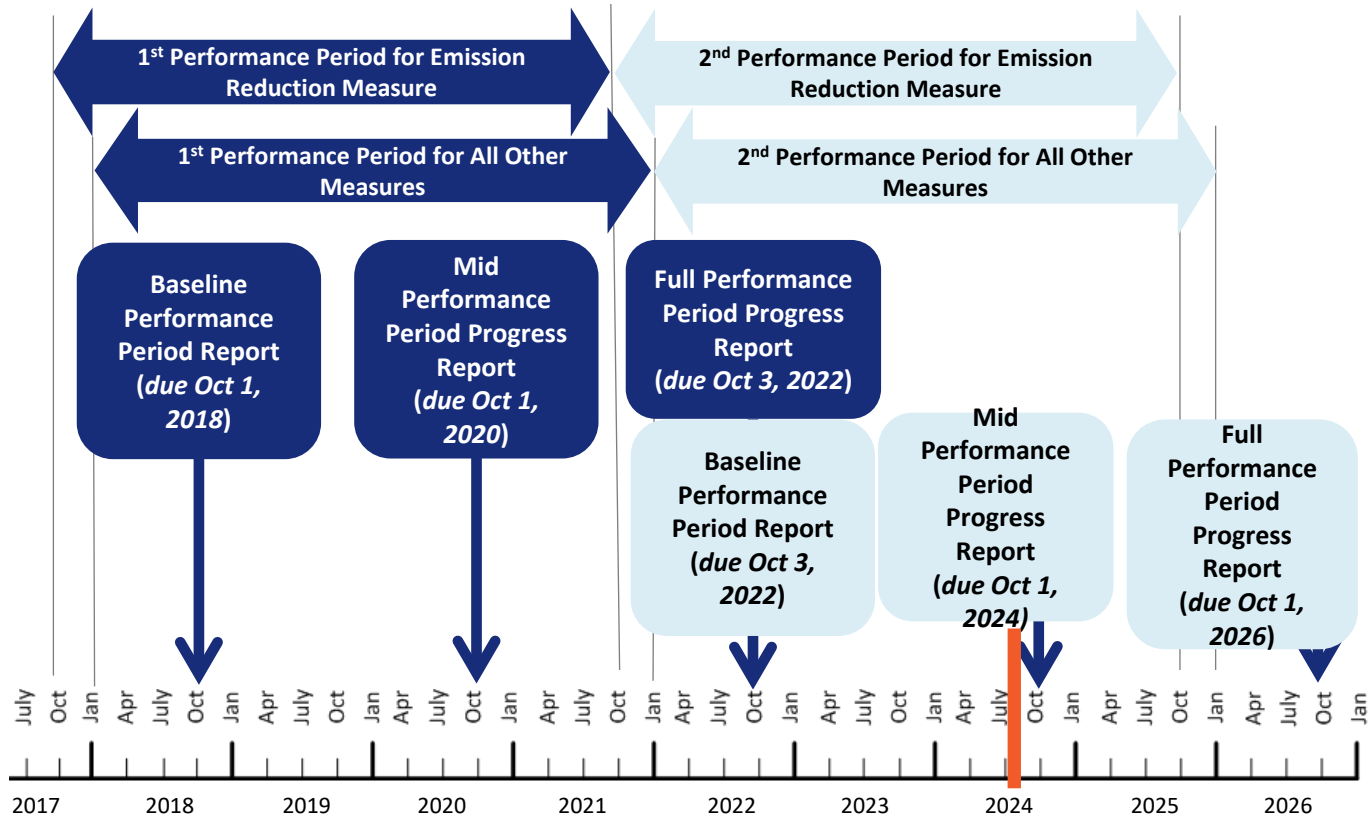


23 CFR 490

- 17 Measures
- Describes the applicability of the measures
- Tells what data needed to support measures
- Describes performance period, reporting requirements and timeline
- Defines the significant progress determination



Performance Period and State DOT Biennial Performance Reporting



Performance Progress Report Includes (for all content requirements, see 23 CFR 490.107)

Contents	Baseline	Mid Period	Full Period
2-year targets	X		
4-year targets	X		
Basis for targets	X		
Baseline conditions/truck freight bottlenecks	X		
Ties to other plans	X		
Actual conditions		X	X
Progress discussion/truck freight bottlenecks		X	X
Investment strategy discussion		X	X
Adjusted four-year targets		X	
Extenuating circumstances		X	X
NHPP/NHFP target achievement discussion		X	X



PMF Overview and Demo

Vicki Miller

Transportation Asset Performance Team



U.S. Department of Transportation
Federal Highway Administration



PMF Milestone Timeline Plan

May

- **Identify Division staff requiring access to PMF** (5/23/24)

June

- **Quarterly TPM Division POCs Meeting** (6/4/24)
- **Identify State DOT staff requiring access to PMF** (6/27/24)

July

- **Internal Webinar** (7/24/24)
- **PMF Pilot Testing**

August

- **External Webinar** (8/21/24)
- **PMF Pilot Testing**
- **Grant access to PMF** (8/27-8/30/24)

September

- **PMF Opens** (9/3/24)
- **External Q&A Session Webinar** (9/18/24)

October

- **State DOTs submit MidPerformance Progress report** (10/1/24)
- **Internal Division Review Q&A Session Webinar** (10/10/24)
- **Division Offices review and comment on the State DOTs' PMF reports**

November

- **Quarterly TPM Division POCs Meeting** (11/14/24)
- **PMF Closes** (10/31/24)

December

- **FHWA HQ completes Significant Progress Determinations (SPD) and informs the Division Offices**

January 2025

- **Division Offices notify State DOT of the SPD results**

May 2025

- **Share State DOT's performance data on TPM website**



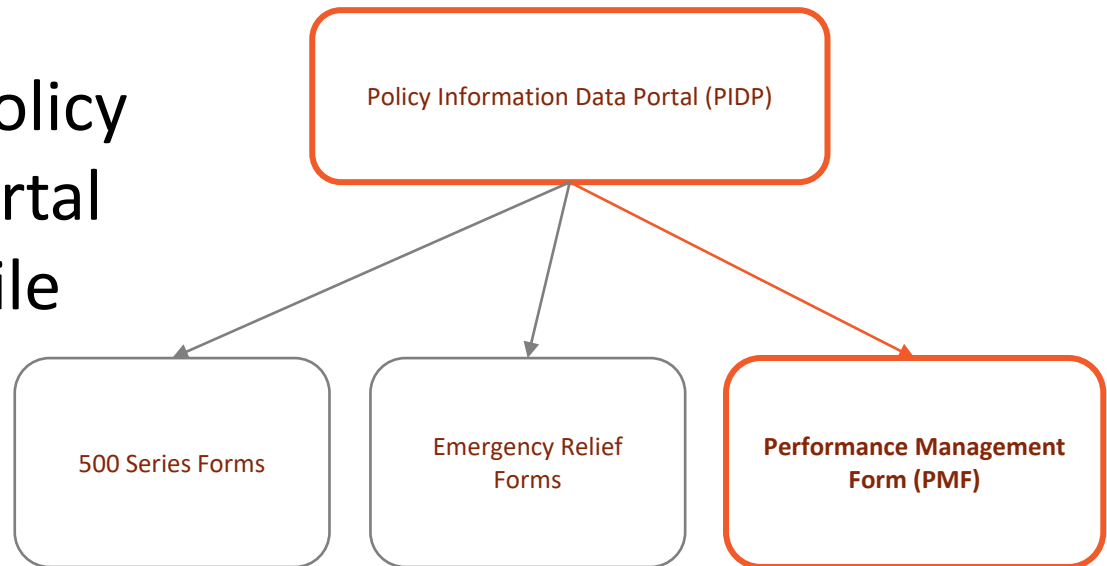
What is the PMF?

- 23 CFR 490.107 Reporting on Performance Targets
 - (a)(3) State DOTs shall report using an electronic template provided by FHWA
- PMF is the electronic reporting template
 - Includes all biennial reporting elements for all measures but Safety
 - Housed behind UPACS
 - Populated biennially (2018, 2020, 2022, 2024)
- State DOTs have to register for Login.Gov credentials and UPACS ID



Where is PMF?

- PMF is a sub-component of the Policy Information Data Portal in FHWA's User Profile and Access Control System (UPACS)



Login.gov and UPACS Registration Procedures

01 STEP

Establishing a Login.gov Account

https://secure.login.gov/sign_up/enter_email

- State DOT employees must have login.gov credentials
- Use email address as username
- Login.gov sends confirmation email to the address for verification
- Complete account creation by following instructions in login.gov email
- Setup authentication methods

02 STEP

UPACS Registration

<https://fhwaapps.fhwa.dot.gov/>

- Organization/Routing Symbol. You should pick STATE DOT as your organization
- Create a profile to establish an UPACS account
- Email is received when approved

03 STEP

Use Login.gov to Access FHWA Applications

<https://fhwaapps.fhwa.dot.gov>

- Log in to UPACS using Login.gov credentials
- Enter your email address and password
- Click Sign In
- Select your second authentication method
- Successful login will display the FHWA Information Systems – UPACS Production Menu
- FHWA POC will grant you the proper rights and permissions to the FHWA application



UPACS Login

- USDOT (all Modes) employees and USDOT contractors are required to use their PIV card
- State DOT employees and their authorized contractors or personnel should log in using Login.Gov credentials

FHWA Information Systems - UPACS Login

[File Transfer Registration](#)[UPACS Administrators](#)[Phone List](#)[System Availability](#)[System Requirements](#)[FAQ](#)

UPACS = User Profile and Access Control System

Log in to UPACS using PIV via Okta

For FHWA DOT Employees - Only



[Detailed Information on PIV](#)

Log in to UPACS using Login.gov via Okta

For External Users - Only

Sign in with  LOGIN.GOV

[UPACS - Login.gov Process Document](#)



UPACS: Things to Keep in Mind

- After 60 days of inactivity, your UPACS Account is soft locked.
- After 180 days of inactivity, your UPACS Account is hard locked.
- After 360 days of inactivity, FHWA Accounts are deactivated; non-FHWA Accounts are deleted.



PMF Content

The PMF has 9 tabs (worksheets)

1. Overview
2. Attachment
3. Pavement (4 measures)
4. Bridge (2 measures)
5. Reliability (2 measures)
6. Freight (1 measure)
7. PHED (1 measure, depending on CMAQ Applicability)
8. Non-SOV (1 measure, depending on CMAQ Applicability)
9. Emissions (1 measure, depending on CMAQ Applicability)



PMF Four-Level Access Rights

Roles	User Affiliations	Reporting	Granting Access Rights
Form Owner	FHWA HQ Office(s)	Initiate/fill/edit/submit /review/accept forms	Grant all levels of access rights including Form Owner
Form Reviewer	FHWA Division Offices	View form data and provide review comments to Form Owner	N/A
Form Admin	State DOT TPM Manager/Coordinator	Initiate/fill/edit/submit forms for review	N/A
Form User	State DOT personnel supporting TPM Manager/Coordinator	Fill/edit forms	N/A



PMF Demonstration



POLICY INFORMATION
DATA PORTAL - TEST

User Name: VMILLER1

Forms Admin ▾

Contact Us ▾ Help ▾ Exit

Welcome to the FHWA's Policy Information Data Portal (PIDP)!

The Data Portal Includes:

Performance Management Form (PMF) ▾

Performance Management Form (PMF) for Transportation Performance Management (TPM). Departments of Transportation (DOTs) from all States, including the District of Columbia and Puerto Rico, can input, edit, and submit State Biennial Performance Report information per 23 CFR 490 for the Federal Highway Administration's (FHWA's) review and acceptance, including:

- a. Baseline Performance Period Report
- b. Mid Performance Period Progress Report
- c. Full Performance Period Progress Report

The purpose of this PMF is to meet the reporting requirements of 23 U.S.C 150 and 23 CFR part 490. The PMF is the electronic template by which States shall report biennial performance information. [23 CFR 490.107(a)(3) and 23 CFR 490.107(b)] This reporting form supports the requirements in 23 CFR 490. It does not change any requirements or provide any guidance. Written information, data, and attachments submitted in the PMF may be provided verbatim in the FHWA State Performance Dashboard and Reports, or in other FHWA reports.

Data collection for this PMF is authorized by OMB Control Number #2125-0656.

The FHWA has created an online [State Performance Dashboard and Reports \(State dashboard\)](#) to display State DOT performance. The State dashboard includes States' performance data, trends, targets, and the basis for the targets. The dashboard may include any additional information provided to FHWA that helps describe the State's performance.

For assistance, please refer to the PMF Biennial Reporting Guide, which is located on the [TPM website](#) on the Guidance page.



Questions?

(on PMF Overview and Demo)



FHWA Review Process

Nelson Hoffman

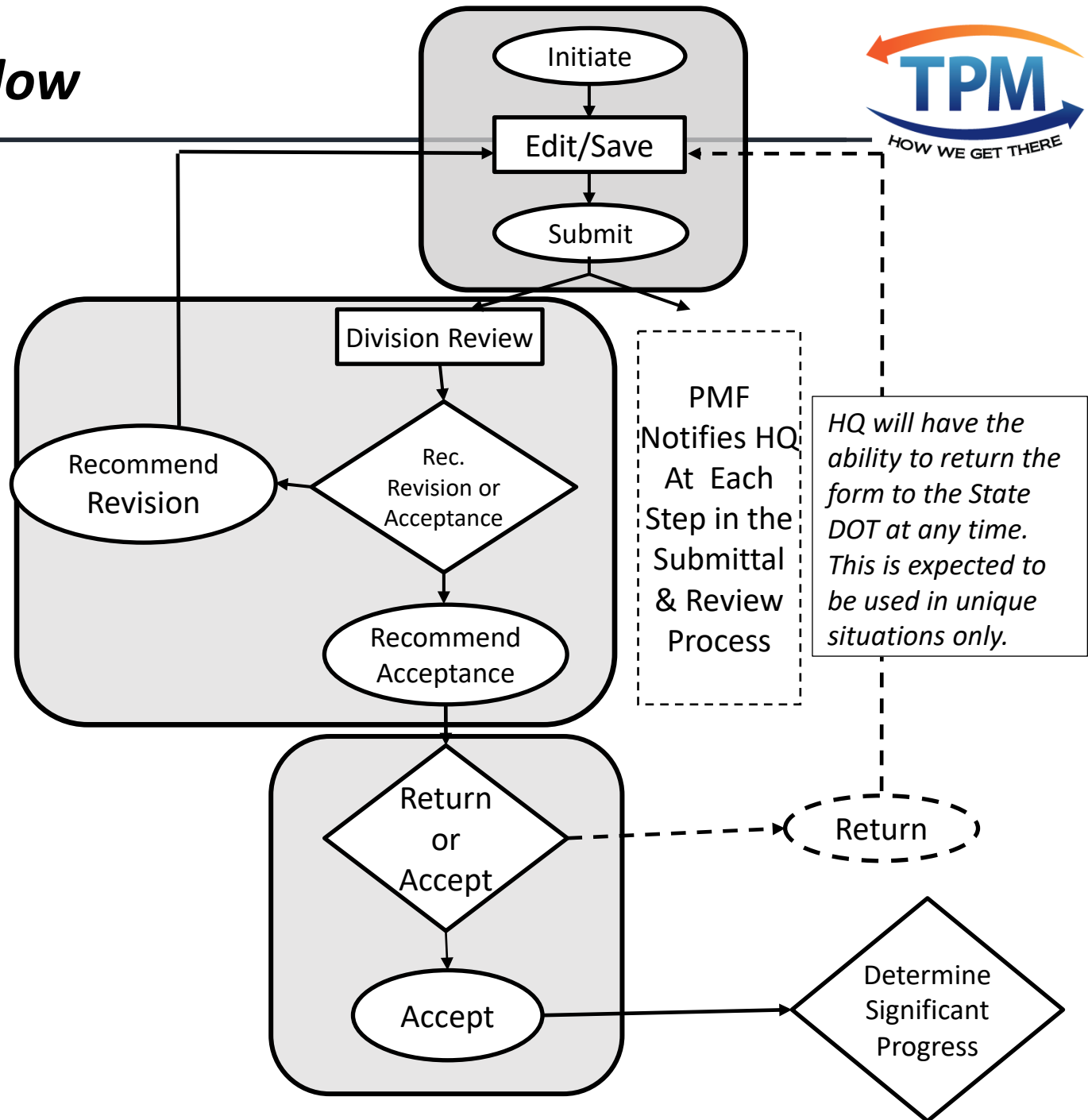
Transportation Asset Performance Team



U.S. Department of Transportation
Federal Highway Administration



PMF Workflow



FHWA Review: Key Dates

- September 3 – PMF is open
- October 1, or earlier – State DOT submits Biennial Report.
- 1 Month Review Period
 - No later than October 16 – Division Office review complete.
 - No later than October 31 – State DOT resubmittal is complete (if necessary).
 - This includes the 2nd review by the Division Office.
- October 31 – PMF Portal is locked & data archived



- 1) Was the State DOT's submittal completed by October 1?
- 2) Were the State DOT's discussions of actual performance achieved by measure area sufficient responses?
 - a. Did the State DOT discuss decisions and investments?
- 3) Did the State DOT adequately discuss progress in addressing congestion at truck freight bottlenecks within the State?
- 4) If a 4-year target was adjusted, did the State DOT provide sufficient discussions of the basis for the adjustment?
- 5) If extenuating circumstance(s) claimed, did the State DOT adequately quantify the impacts that resulted from these circumstances?
- 6) Did the State submit a CMAQ Performance Plan for each MPO required to prepare one?
- 7) All expected supporting information submitted?
- 8) Did the State submit Significant Progress Determination (SPD) additional reporting (if applicable)

See: [Performance Management Form \(PMF\)](#)
[Input Fields: Mid Performance Period \(MPP\)](#)
[Progress Report Due October 1, 2024 \(dot.gov\)](#)



Review Comments

- FHWA is not approving or rejecting State DOT reports.
- Specify field when possible
- Comment Types
 - Must be addressed
 - For consideration
- PMF comment box only accepts plain text



Form Reviewer: Can Provide Review Comments

5.6.1. Review Screen Option

The Divisional office can enter their comments and Recommend Acceptance for the Form Owners to Accept or return the submission.

Besides the Cancel and Review inputs options, Divisional office will have some more options available: like 'Save Comments', 'Submit Comments', 'Recommend Acceptance', and 'Require Revision'.

- **Save Comments** will I only save the comments entered by the Divisional Office, but not submit for the Form Owner's acceptance.
- **Submit Comments** will save and submit the comments for the Form Owner's acceptance.
- **Recommend Acceptance** will send an email to the Form Owner stating that this form has been reviewed and recommended for acceptance .
- **Require Revision** will send an email with comments to the Form Admin(s) stating that the form has been reviewed and requires revision.

Only Form Owners would see the 'Accept' or 'Return' options.

'Accept' would accept the submission.

'Return' would return the submission.



Questions?

(on FHWA Review Process)



2020 Decennial Census for CMAQ Traffic Congestion Measures

Christopher Chang

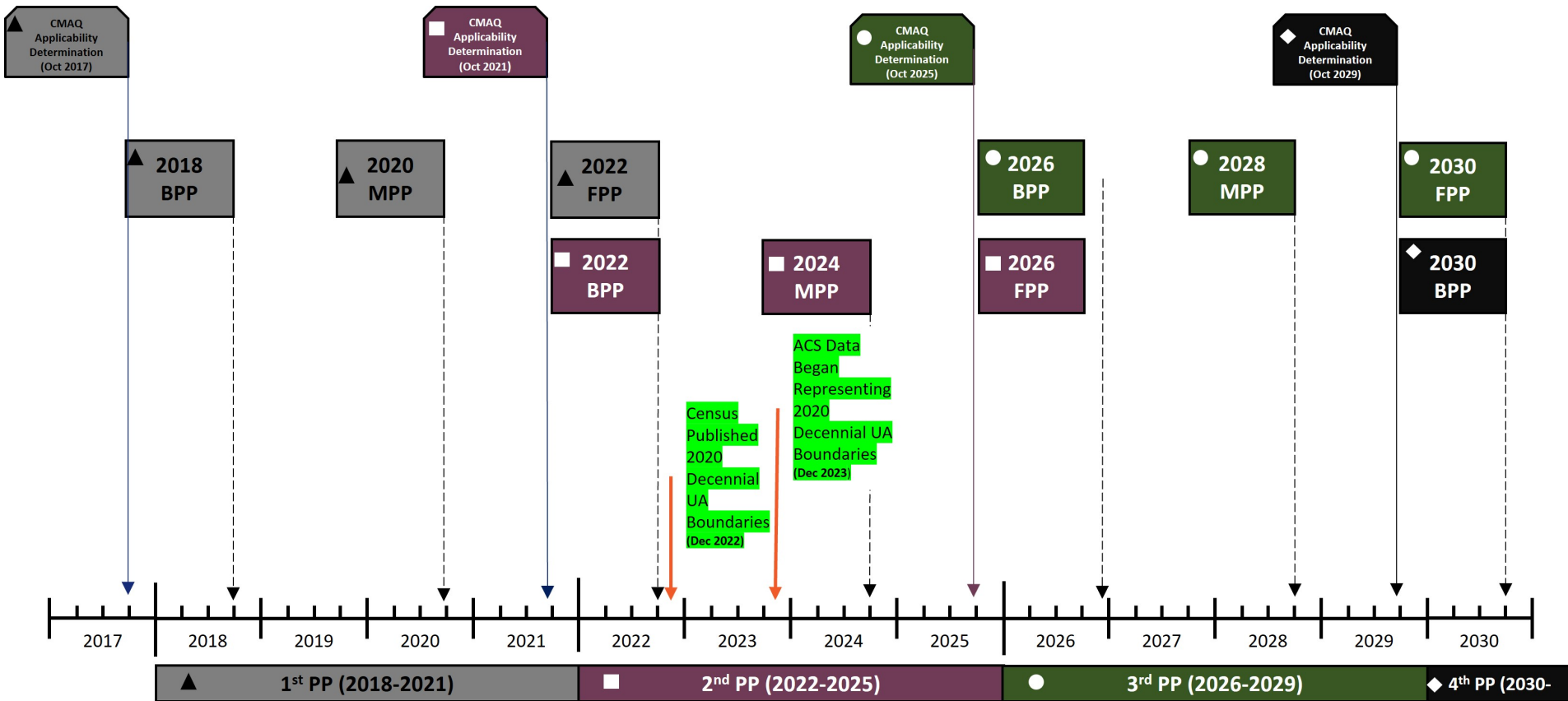
Transportation Asset Performance Team



U.S. Department of Transportation
Federal Highway Administration



TPM Performance Period (PP) Framework (23 CFR 490.105(e)(4)(i)(A), 23 CFR 490.105(f)(5)(iii)(F) & 23 CFR 490.107(b))



Purpose

- 1. How 2020 Decennial Census urban area boundaries are incorporated into the TPM CMAQ Traffic Congestion Measures.**
- 2. Discuss Urban Area Data updates for incorporating 2020 Decennial Census urban area boundaries.**
- 3. Clarify the data sources for the actual measure values for 2024 MPP, 2026 FPP and 2026 BPP and 2025 CMAQ Applicability Determination.**



CMAQ Traffic Congestion Measures

(23 CFR 490.713, 23 CFR 490.105(e)(8) & 23 CFR 490.105(f)(5))

- **Urbanized Area Specific Measures** – Computed for each “applicable” Urbanized Area.
 1. **Percent of Non-Single Occupancy Vehicle (Non-SOV) Travel Measure** –
 2. **Annual Hours of Peak Hour Excessive Delay (PHED) Measure** –



Percent of Non-SOV Travel Measure Computation Review - Example

(<https://www.fhwa.dot.gov/tpm/guidance/hif18024.pdf>)

DP03 SELECTED ECONOMIC CHARACTERISTICS			
American Community Survey 2021: ACS 5-Year Estimates Selected Population Data Profiles		Notes	Geos
McKinney, TX Urbanized Area (2010)		Topics	Codes
Total population		Dataset	Year
		More Tools	
Label	Estimate	Margin of Error	Percent
✓ COMMUTING TO WORK			
✓ Workers 16 years and over	125,556	±2,344	125,556
Car, truck, or van -- drove alone	92,372	±2,323	73.6%

$$\text{Percent NonSOV Measure}_{UrbanId52687} = 100\% - 73.6\% = \mathbf{26.4\%}$$



PHED Measure Computation Review – Example

(<https://www.fhwa.dot.gov/tpm/guidance/hif18024.pdf>)

HPMS Travel Time Metrics (TTM) Table

DataYear	TravelTimeCode	ReportDate	FSsystem	UrbanId	FacilityType	NHS	SegmentLength	Directionality	DIRAADT	LOTTRAMP	TTAMP50PCT	TTAMP80PCT	TTTRWE	TTTWE50PCT	TTTWE95PCT	PHED	OCCFAC	MetricSource	Comments
2023	112P50686	2024-07-03 22:06:32.293	3	52390	2	2	0.0320	1	5250	1.20	5	6	NULL	0	0	0.000	NULL	1	NULL
2023	112P50687	2024-07-03 22:06:46.350	3	52390	2	2	0.2680	1	5250	1.49	64	96	NULL	0	0	3501.622	NULL	1	NULL
2023	112P50698	2024-07-03 22:06:44.647	3	52390	2	1	0.0770	3	11974	1.85	13	23	NULL	0	0	2527.391	NULL	1	NULL
2023	112P52793	2024-07-03 22:06:33.240	3	52390	2	1	0.0170	1	13681	1.62	4	7	NULL	0	0	87.456	NULL	1	NULL
2023	112P15830	2024-07-03 22:06:14.127	1	52390	2	1	0.5820	5	41951	2.20	42	91	1.85	36	66	129138.916	NULL	1	NULL
2023	112P16331	2024-07-03 22:06:46.260	3	52390	2	1	0.0240	3	9457	1.33	51	69	NULL	0	0	1268.023	NULL	1	NULL
2023	112P16332	2024-07-03 22:06:27.393	3	52390	2	1	0.5980	3	7405	1.22	61	74	NULL	0	0	759.457	NULL	1	NULL
2023	112P16333	2024-07-03 22:06:27.397	3	52390	2	1	0.3380	3	7005	1.12	45	51	NULL	0	0	150.145	NULL	1	NULL
2023	112P16101	2024-07-03 22:06:31.573	3	52390	2	1	0.0330	1	2793	1.32	4	5	NULL	0	0	59.704	NULL	1	NULL
2023	112P16102	2024-07-03 22:06:27.383	3	52390	2	1	0.0320	1	6750	1.75	14	25	NULL	0	0	1148.205	NULL	1	NULL
2023	112P16104	2024-07-03 22:06:33.280	3	52390	2	1	0.8460	1	8376	1.11	59	65	NULL	0	0	447.888	NULL	1	NULL
2023	112P16105	2024-07-03 22:06:27.387	3	52390	2	1	0.0390	1	8879	1.09	3	3	NULL	0	0	5.292	NULL	1	NULL
2023	112P16082	2024-07-03 22:06:32.590	3	52390	2	1	0.1010	3	5608	1.71	31	53	NULL	0	0	1741.780	NULL	1	NULL
2023	112P16083	2024-07-03 22:06:14.143	3	52390	2	1	0.0780	3	5454	1.81	10	18	NULL	0	0	541.859	NULL	1	NULL
2023	112P19701	2024-07-03 22:06:31.900	1	52390	2	1	0.4270	1	22647	1.04	23	24	1.15	23	26	109.729	NULL	1	NULL
2023	112P19702	2024-07-03 22:06:38.933	1	52390	2	1	0.3310	1	19176	1.05	18	19	1.15	18	20	5.616	NULL	1	NULL
2023	111P06370	2024-07-03 22:06:11.357	3	52687	2	1	0.1240	3	24331	1.46	24	35	NULL	0	0	13876.272	NULL	1	NULL
2023	111P06371	2024-07-03 22:06:06.817	3	52687	2	1	0.0610	3	17793	1.53	8	12	NULL	0	0	986.699	NULL	1	NULL
2023	111P04475	2024-07-03 22:06:03.507	2	52687	2	1	0.6660	1	72273	1.03	34	35	NULL	0	0	3421.783	NULL	1	NULL
2023	111P04476	2024-07-03 22:06:05.600	2	52687	2	1	0.8270	1	71235	1.02	42	43	NULL	0	0	7710.352	NULL	1	NULL



PHED Measure Computation Review – Example Cont'd.

(<https://www.fhwa.dot.gov/tpm/guidance/hif18024.pdf>)

HPMSTTM Table

DataYear	TravelTimeCode	FSystem	UrbanId	FacilityType	NHS	PHED
2023	111+04476	2	52687	2	1	683.182
2023	111+04477	2	52687	2	1	13577.760
2023	111+04478	2	52687	2	1	1869.492
2023	111+04479	2	52687	2	1	142.941
2023	111+04480	2	52687	2	1	1743.966
...
2023	111P19794	3	52687	2	1	2318.287
2023	111P19795	3	52687	2	1	0.000
2023	111P20195	3	52687	2	1	0.000
2023	111P20196	3	52687	2	1	0.000
2023	111P20315	3	52687	2	1	433.466

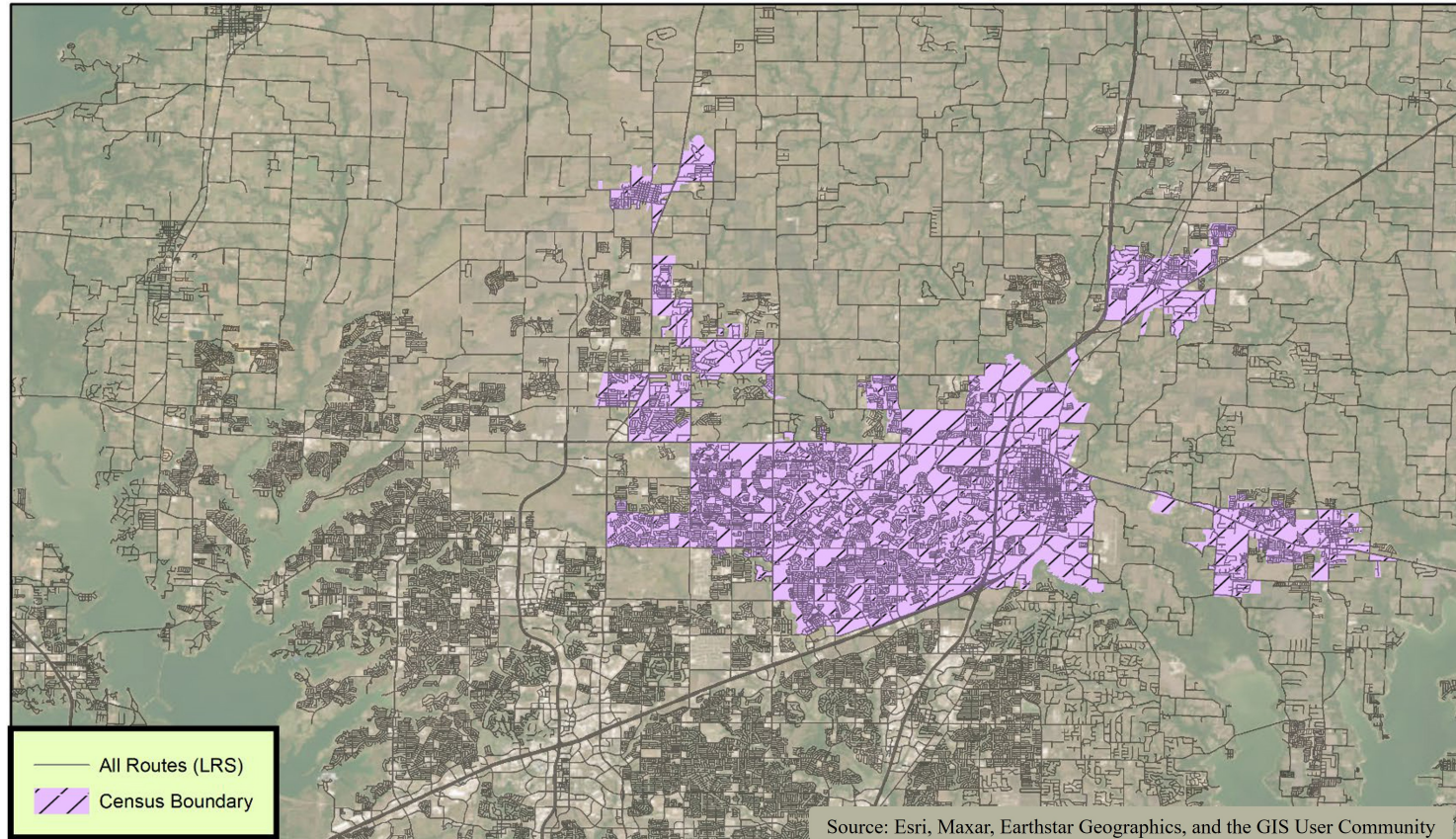
DP05 ACS DEMOGRAPHIC AND HOUSING ESTIMATES	
American Community Survey 2021: ACS 5-Year Estimates Data Profiles	
Label	McKinney, TX Urbanized Area (2010)
	Estimate
SEX AND AGE	
Total population	252,780

$$PHED\ Measure_{UrbanId52687} = \frac{\sum^{All\ Mainline\ NHS\ Segments\ 52687} PHED_{UrbanId52687}}{Population_{UrbanId52687}} = \frac{1,144,572.702}{252,780} = 4.5\ hours\ per\ capita$$



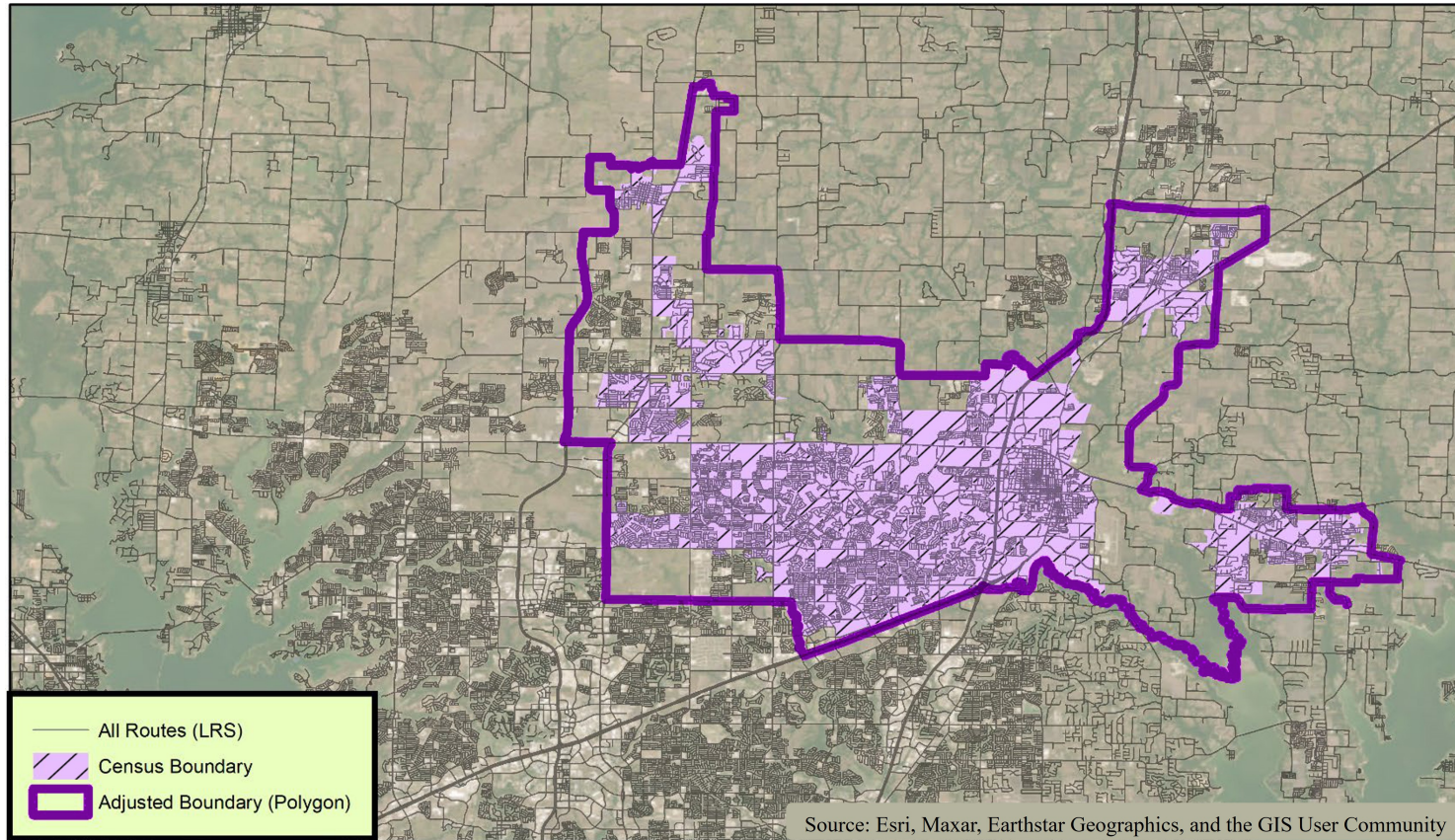
Urban Area Data (applies to all 52 states)

(23 CFR 490.111(b)(1): [HPMS Field Manual](#) & 23 CFR 490.103(b))



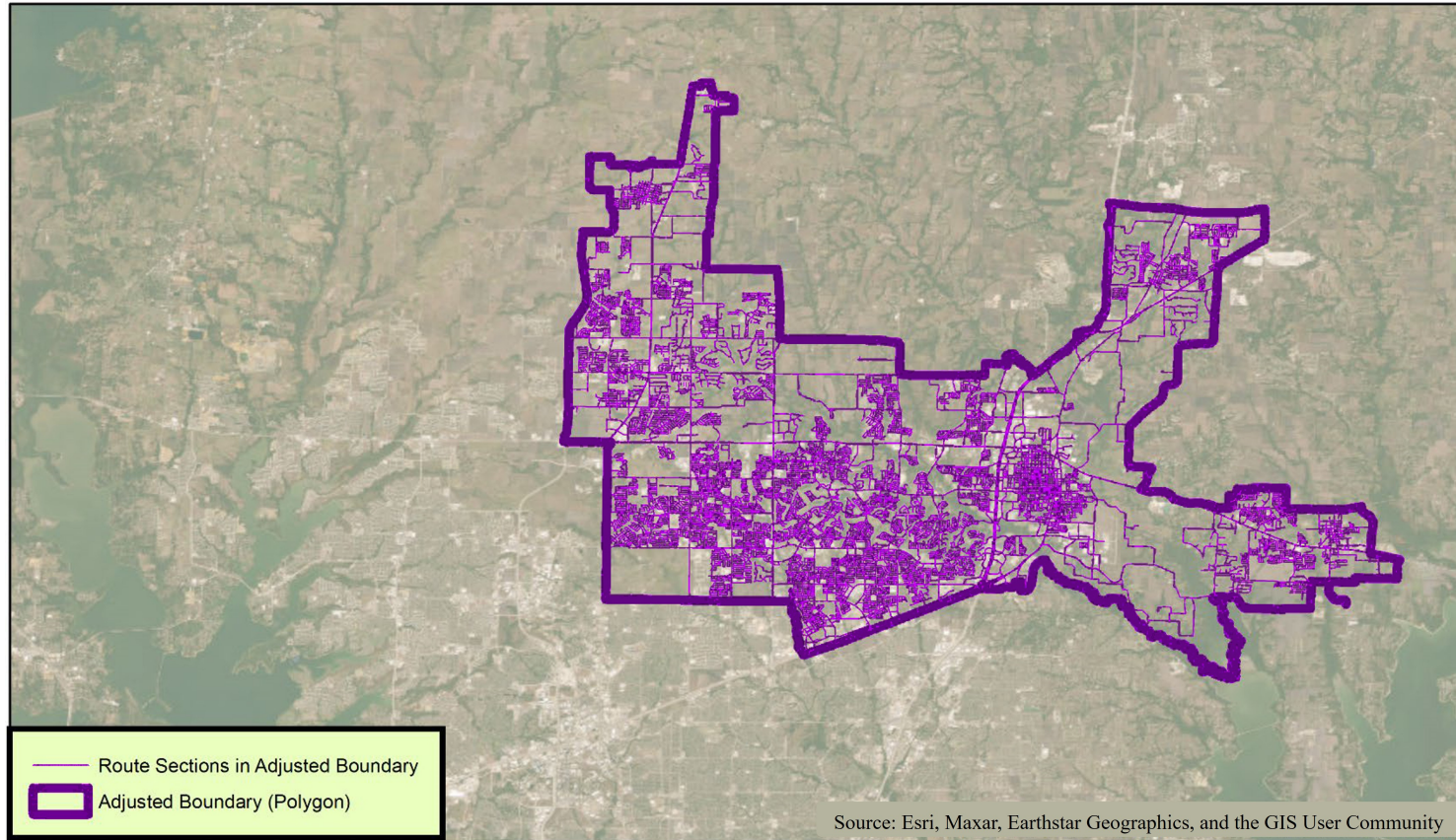
Urban Area Data (applies to all 52 states)

(23 CFR 490.111(b)(1): [HPMS Field Manual](#) & 23 CFR 490.103(b))



Urban Area Data (applies to all 52 states)

(23 CFR 490.111(b)(1): [HPMS Field Manual](#) & 23 CFR 490.103(b))



Urban Area Data (applies to all 52 states)

(23 CFR 490.111(b)(1): [HPMS Field Manual](#) & 23 CFR 490.103(b))

URBAN_ID Data Item in HPMS Road Events

Routeld	BeginPoint	EndPoint	DataItem	ValueNumeric	ValueText	ValueDate
043AA0002	0.0000	0.0960	URBAN_ID	52687.000	NULL	2023-12-31
043AA0007	0.0000	0.0500	URBAN_ID	52687.000	NULL	2023-12-31
043AA0033	0.0000	1.2140	URBAN_ID	52687.000	NULL	2023-12-31
043AA0047	0.0000	0.1030	URBAN_ID	52687.000	NULL	2023-12-31
043AA0048	0.0000	0.0910	URBAN_ID	52687.000	NULL	2023-12-31
043AA0049	0.0000	0.0920	URBAN_ID	52687.000	NULL	2023-12-31
043AA0050	0.8030	0.9380	URBAN_ID	52687.000	NULL	2023-12-31
043AA0051	2.5810	2.9630	URBAN_ID	52687.000	NULL	2023-12-31
043AA0051	2.9640	3.5640	URBAN_ID	52687.000	NULL	2023-12-31
043AA0052	0.3280	0.5150	URBAN_ID	52687.000	NULL	2023-12-31
043AA0055	0.0890	0.2090	URBAN_ID	52687.000	NULL	2023-12-31
043AA0056	0.0000	0.1170	URBAN_ID	52687.000	NULL	2023-12-31
043AA0061	0.0000	0.2710	URBAN_ID	52687.000	NULL	2023-12-31
043AA0062	0.0000	0.0530	URBAN_ID	52687.000	NULL	2023-12-31
043AA0063	0.0000	0.2710	URBAN_ID	52687.000	NULL	2023-12-31
043AA0064	0.0000	0.0530	URBAN_ID	52687.000	NULL	2023-12-31
043AA0065	0.0000	0.0310	URBAN_ID	52687.000	NULL	2023-12-31
043AA0066	0.0000	0.0430	URBAN_ID	52687.000	NULL	2023-12-31
043AA0067	0.0000	0.0500	URBAN_ID	52687.000	NULL	2023-12-31
043AA0081	0.0000	0.2600	URBAN_ID	52687.000	NULL	2023-12-31
043AA0082	0.0000	0.0610	URBAN_ID	52687.000	NULL	2023-12-31



Source: Esri, Maxar, Earthstar Geographics, and the GIS User Community

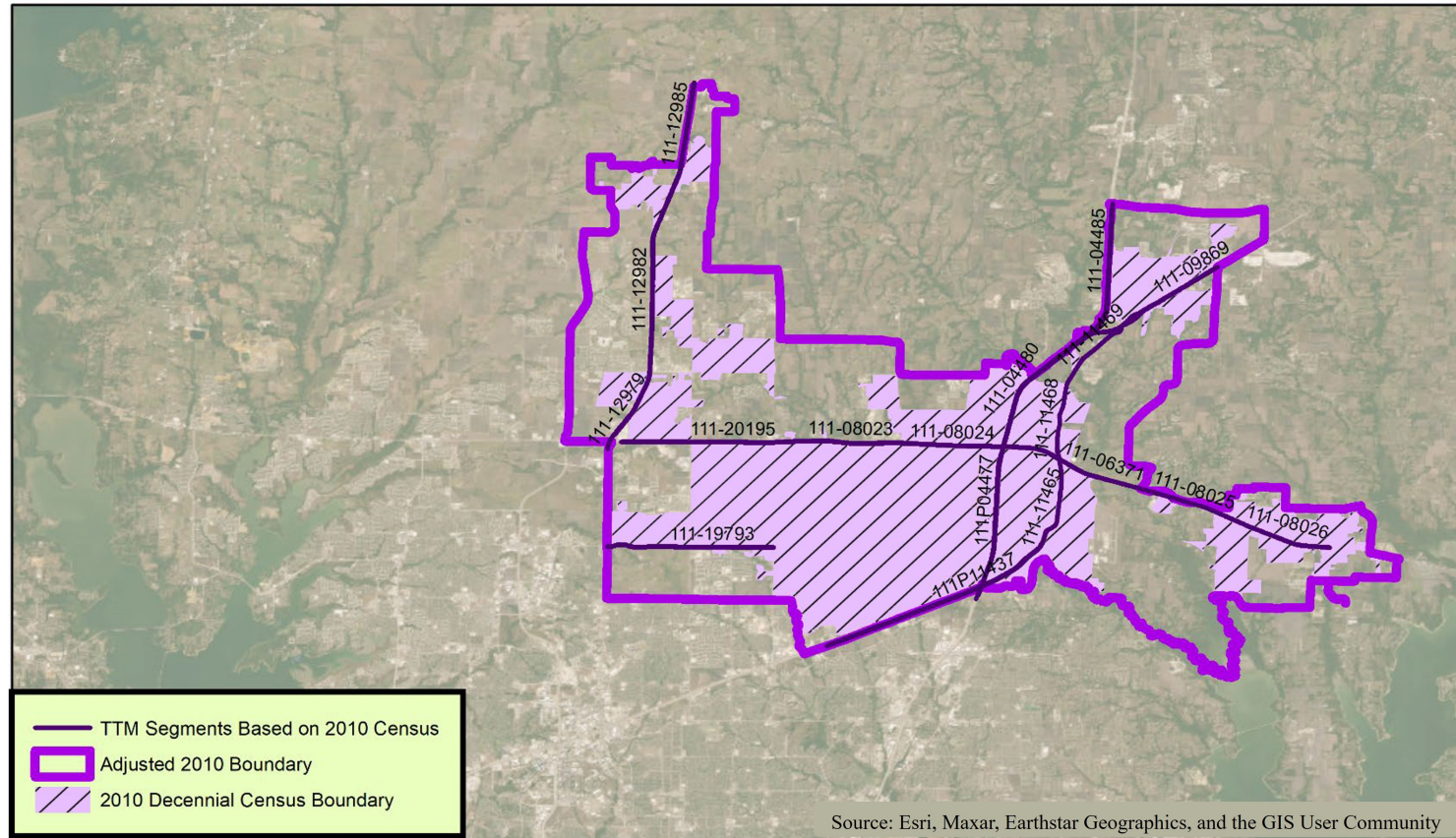
Urban Area Data (applies to all 52 states)

(23 CFR 490.111(b)(1) - [HPMS Field Manual](#), 23 CFR 490.105(d)(3) & 23 CFR 490.107(b)(1)(ii)(D)).

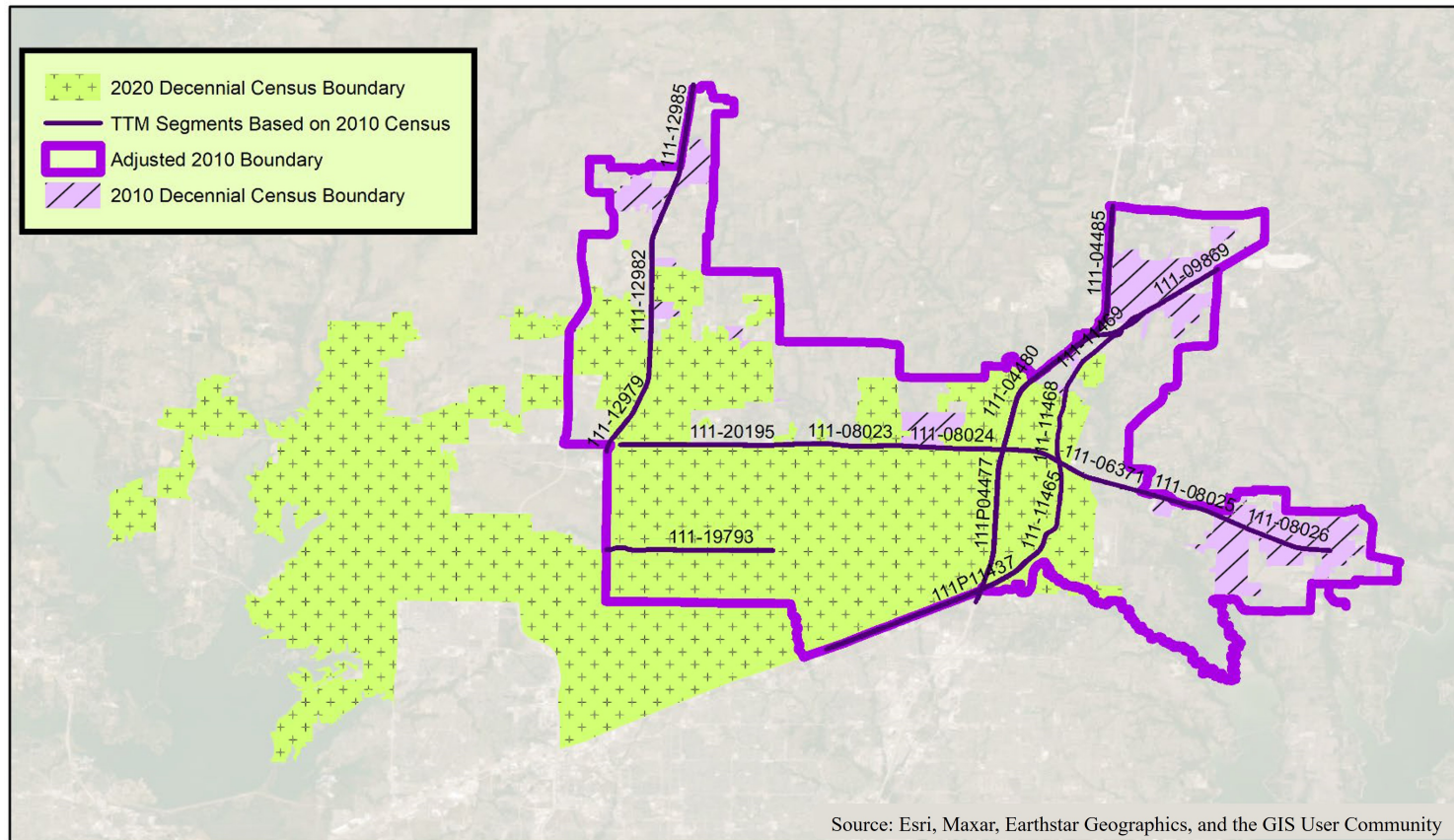
1. **US Census published 2020 Decennial Census Urban Boundaries** – December 2022
2. **Adjusted Urban Boundary (Polygon) Approval** – FHWA Division Office Approval with FHWA Office of Planning assistance
3. **HPMS Events Data Submission** – State DOTs submit attribute data (**URBAN_ID** Data Item) based on approved adjusted boundaries – simultaneous update in 2024 Events data for 2025 submission.
4. **HPMS TTM Data Submission** – State DOTs submit travel time metric (TTM) data with conflated attribute data (i.e., **UrbanId** Field) - simultaneous update in 2025 TTM data for 2026 submission.



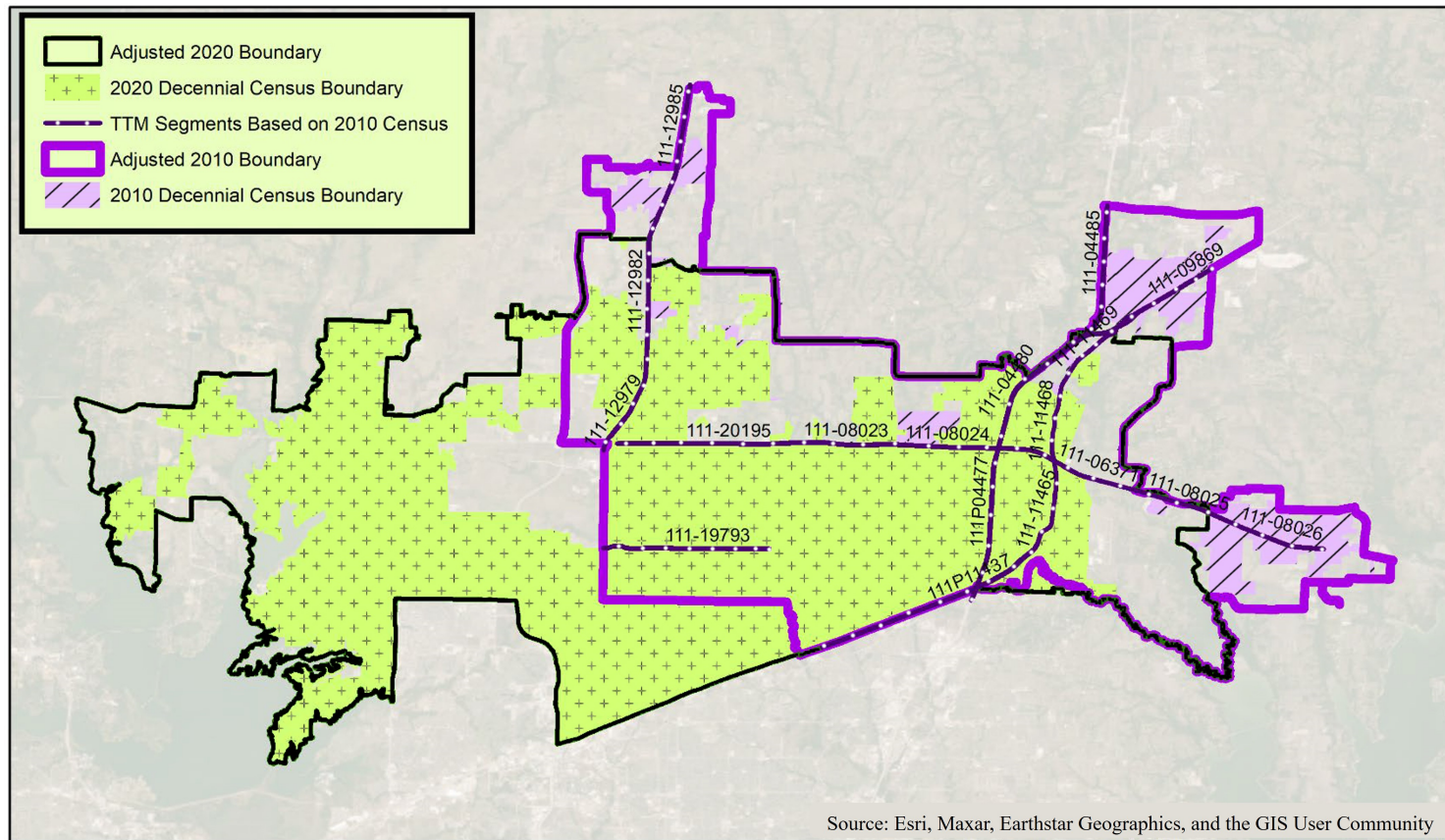
Urban Area Data Impacted by New (2020) Decennial Census



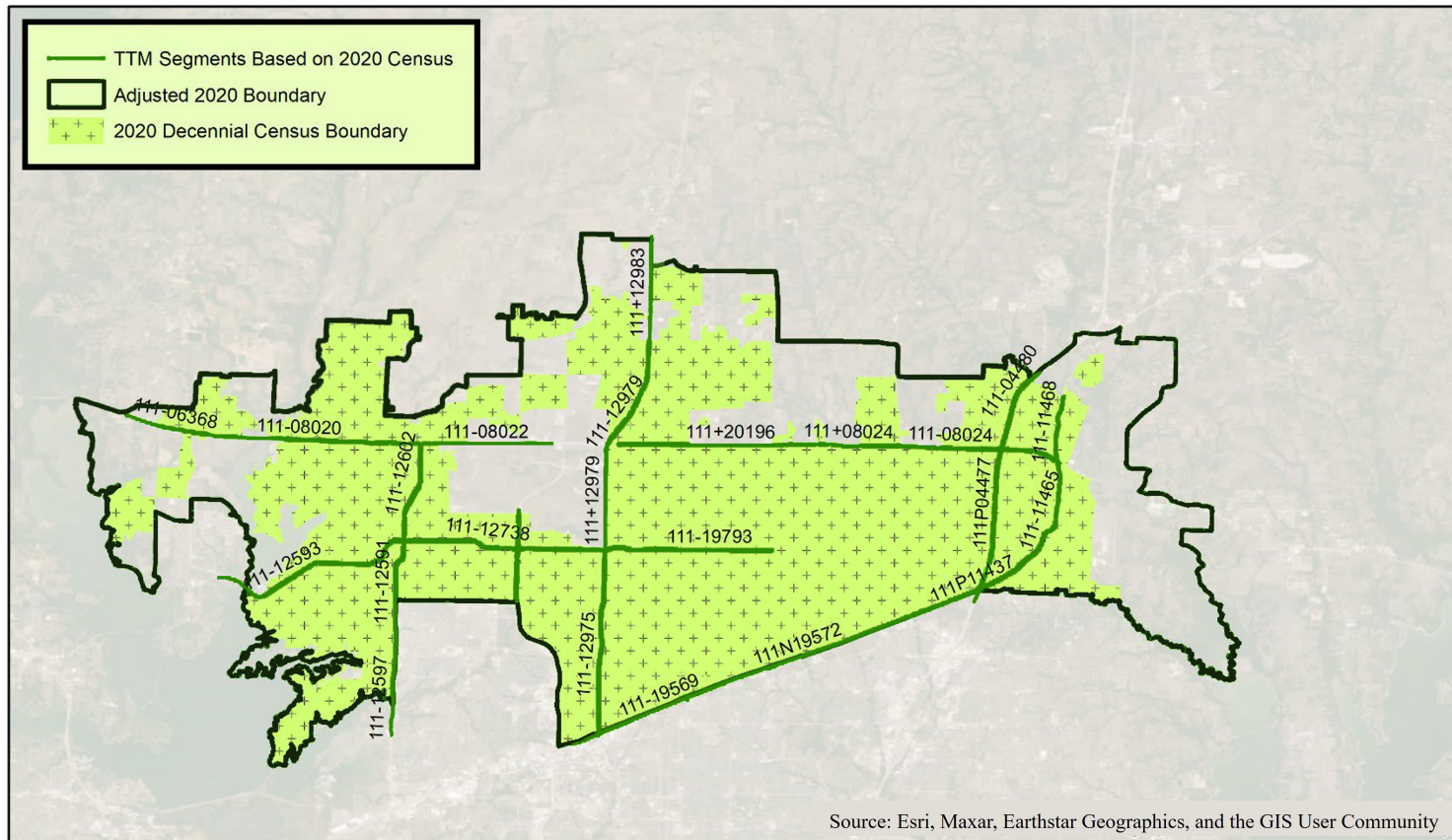
Urban Area Data Impacted by New (2020) Decennial Census



Urban Area Data Impacted by New (2020) Decennial Census



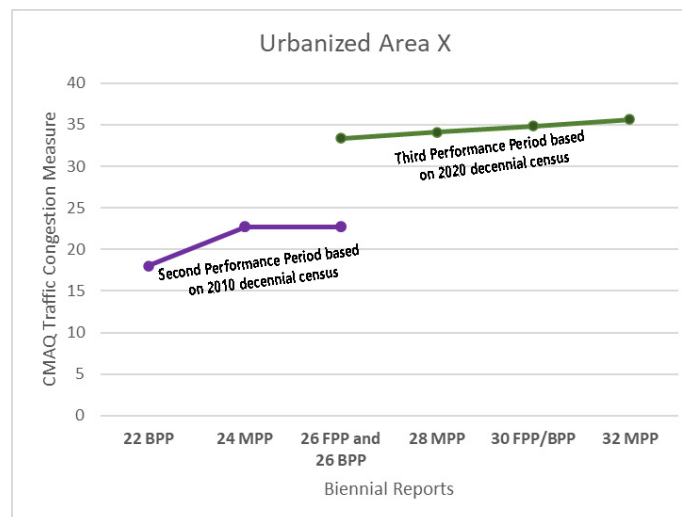
Urban Area Data Impacted by New (2020) Decennial Census



Boundary Determination for a Performance Period - CMAQ Traffic Congestion Measure Applicability Determination

(23 CFR 490.105(e)(8)(iii)(E), 23 CFR 490.105(f)(5)(iii)(E) & 23 CFR 490.103(b))

- Urbanized area boundaries for the 2nd Performance Period Traffic Congestion Measures – determined in 2021 based on **2010** Decennial Census.
- Urbanized area boundaries for the 3rd Performance Period Traffic Congestion Measures – will be determined in 2025 based on **2020** Decennial Census.



Boundary Transition Between Performance Periods - CMAQ Traffic Congestion Measures

(23 CFR 490.105(e)(8)(iii)(E), 23 CFR 490.105(f)(5)(iii)(E) & 23 CFR 490.103(b))



Data Sources for Measure Computation

CMAQ Traffic Congestion Measure Components	2024 MPP (2-yr Actual for 2 nd Performance Period)	2026 FPP (4-yr Actual for 2 nd Performance Period)	2026 BPP (Baseline for 3 rd Performance Period)
Percent of Non-SOV Travel Measure ¹	2021 ACS DP03 (2010 Decennial Census)	2021 ACS DP03 (2010 Decennial Census)	2024 ACS DP03 (2020 Decennial Census)
PHED Measure – Annual Total Peak Hour Excessive Delay (numerator)	2023 TTM submitted in 2024 (UrbanId 2010 Decennial Census)	2025 TTM submitted in 2026 (UrbanIdLegacy ³ 2010 Decennial Census)	2025 TTM submitted in 2026 (UrbanId ⁴ 2020 Decennial Census)
PHED Measure – Population ² (denominator)	2021 ACS DP05 (2010 Decennial Census)	2021 ACS DP05 (2010 Decennial Census)	2024 ACS DP05 (2020 Decennial Census)

¹ the most recent ACS data as of August 15th of the year in which the State DOT Biennial Performance Report is due to FHWA for the determined boundaries.

² the most recent ACS data at the time when the State DOT Biennial Performance Period Report is due to FHWA for the determined boundaries.

³ **LegacyUrbanId**: An additional data field (More Information to be provided by FHWA). Conflated Urban ID values (based on 2010 Decennial Census) for the reporting segments will be available in the NPMRDS for the 2025 TTM Data.

⁴ **UrbanId**: Conflated Urban ID values (based on 2020 Decennial Census) for the reporting segments will be provided by FHWA for the 2025 TTM Data.

Legend:

- TTM Segments Based on 2020 Census (Green line)
- Adjusted 2020 Boundary (Black outline)
- TTM Segments Based on 2010 Census (Purple line)
- Adjusted 2010 Boundary (Purple outline)
- 2020 Decennial Census Boundary (Green cross-hatch pattern)

The map displays the TTM segments for the 2020 Census, overlaid on the 2010 Census boundary. The 2020 segments are shown in green, while the 2010 segments are shown in purple. The map includes various geographic features such as roads, water bodies, and land parcels. The 2020 segments are more numerous and detailed than the 2010 segments, reflecting the updated census data. The map also shows the adjusted boundaries for both the 2020 and 2010 censuses, which are used to compare the two datasets. The 2020 segments are generally smaller and more numerous than the 2010 segments, indicating a more granular level of detail in the 2020 census data.

Questions?

(on 2020 Decennial Census for CMAQ Traffic Congestion Measures)



Significant Progress Determination (SPD) Process

Nelson Hoffman

Transportation Asset Performance Team



U.S. Department of Transportation
Federal Highway Administration



Significant Progress Determination (SPD)

23 CFR 490.109

- ***FHWA Procedure for Determining Significant Progress toward the NHPP and NHFP Measures*** <https://www.fhwa.dot.gov/tpm/guidance/>
- **2024 MPP (2nd Performance Period)**
- **Applies to State DOT 2 year targets for the**
 - 8 National Highway Performance Program (NHPP) measures
 - Infrastructure Condition (Pavement and Bridge)
 - Highway Reliability
 - 1 National Highway Freight Program (NHFP) measure



Significant Progress Determination (SPD)

23 CFR 490.109

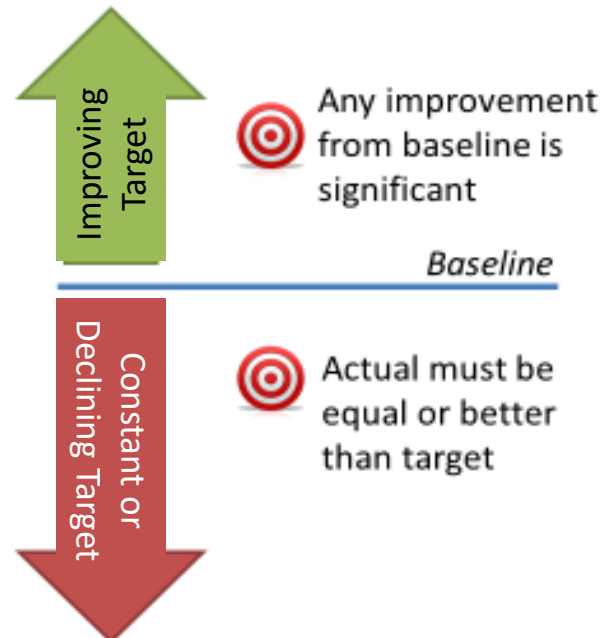
- **Does not apply to any State DOT Targets for**
 - 2 Congestion Mitigation and Air Quality Improvement (CMAQ) Program Traffic Congestion Measures
 - 1 CMAQ Emission Measure
 - Any optional additional targets the State DOT may set
- **Does not apply to any MPO targets**



Accountability and Transparency in Performance Management

Significant Progress

- State Establishes Targets
 - Improving, Constant or Declining
- Determination
 - Is the actual equal or better than the established target?
 - OR
 - Is the actual better than the baseline?



Consequences for Not Making Significant Progress

(23 CFR 490.109)

- **For NHPP targets**, State DOT must document in the next State DOT Biennial Performance Report the actions it will take to achieve all targets in the broader measure area
- **For NHFP**, State DOT must provide a report that documents actions the State DOT will take to achieve the established target.
- Any target assessed as “**Progress Not Determined**” has not failed to meet the significant progress requirements, and no additional reporting is required due to this assessment.



Extenuating Circumstances Provision (23 CFR 490.109)

1. Natural or manmade disasters that caused delay in NHPP or NHFP project delivery.
2. Natural or manmade disasters that caused extenuating delay in data collection.
3. Natural or manmade disasters that caused damage/loss of data system.
4. Sudden discontinuation of Federal government furnished data due to natural and manmade disasters.
5. Sudden discontinuation of Federal government furnished data due to lack of funding.
6. New law and/or regulation directing State DOTs to change metric and/or measure calculation.



SPD Timeline

- Oct. 1, 2024 – State DOTs have submitted State Biennial Performance,
- Oct. 31, 2024 – PMF closes, FHWA reviews complete.

FHWA will take the following steps

- Nov. 2024 – data analysis completed,
- Dec. 2024 – FHWA makes determination,
- Jan. 2025 – FHWA Division Offices notifies State DOTs,
- March 2025 – determinations and information published on website.

<https://www.fhwa.dot.gov/tpm/reporting/state/>



Questions?

(on Significant Progress Determination)



In Conclusion

- Contact Us:
 - fhwa-tap-team@dot.gov
- External PMF Webinar for State DOTs:
PMF Q&A Session Webinar
 - September 12th, 2024, 3:00 pm – 4:00 pm ET

